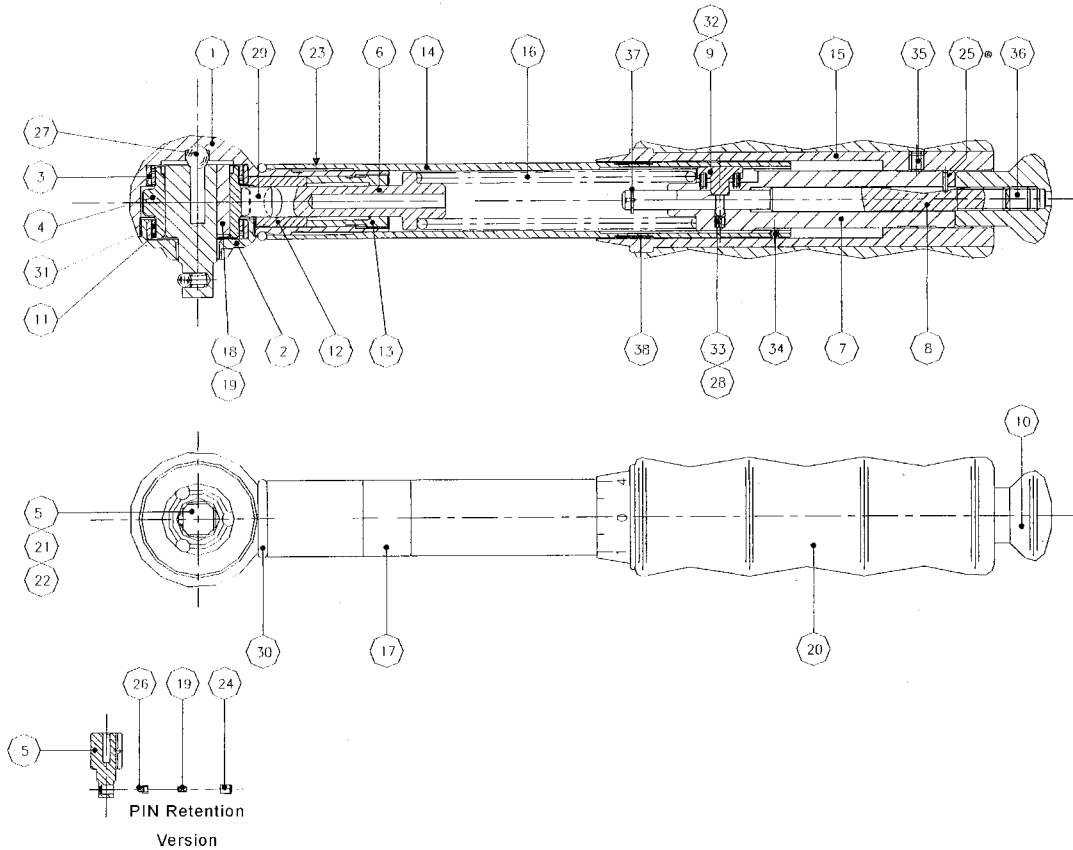


# TSC Cam-Over Wrench



Ref#	Part#	Qty	Description	Ref#	Part#	Qty	Description
1	20-C92560	1	Head TSC/P	16	20-A92770	1	Main Spring TSC 5 & TSC 45
2	20-B92570	1	Front Bearing Housing		20-A92780	1	Main Spring TSC 10 & TSC 90
3	20-A94640	3	Liner Bush	17	-	1	Label TSC 5 & TSC 45
4	20-C92600	1	CAM TSC/P 5 Lobe		-	1	Label TSC 10 & TSC 90
	20-C97550	1	CAM TSC/P 5 Lobe - Left Hand	18	20-A92670	2	Pawl
5	20-C92611	1	Spindle TSC/P Ball Retention (# 21 & 22)	19	20-A59850	2	Pawl Spring (TSN 25/55)
	20-C92612	1	Spindle TSC/P Pin Retention (# 19, 24, 26)	20	20-A74752	1	Handgrip (TSN25)
	20-C97561	1	Spindle TSC/P Ball Retention L/H (# 21 & 22)	21	20-A73670	1	Spring Ball Catch
	20-C97562	1	Spindle TSC/P Pin Retention (# 19, 24, 26)	22	20-P15020	1	Steel Ball 3mm
6	20-A92620	1	Thrust Pin (Angled)	23	20-A67691	1	Quality Control Label
7	20-B92640	1	Adjusting Screw	24	20-A59870	1	Cup (Pin Retention)
8	20-B92650	1	Actuator Rod	25	20-P22620	1	Dowel Pin 1.0mm Dia x 4.0mm
9	20-A92660	1	Locking Key	26	20-A64620	1	Pin (Pin Retention)
10	20-A92760	1	Lock Knob	27	20-P19860	1	Steel Ball 5mm
11	20-A94940	2	Bearing Cage	28	20-A92800	1	Detent Ball Spring TSC
12	20-A95160	1	Roller Guide	29	20-P19820	1	Roller C/Chrome
13	20-A95170	1	Guide Bush	30	20-P19830	1	O Ring Silicone 70 11x12
14	20-B92593	1	Handle Silver TSC 5	31	20-P21480	120	Steel Ball 1.0 Dia
	20-B92592	1	Handle Black TSC 10	32	20-P19850	2	Spring
	20-B92593	1	Handle Silver TSC 45	33	20-P11730	1	Steel Ball 2mm
	20-B92592	1	Handle Black TSC 90	34	20-P15040	2	Steel Ball 1.5mm
15	20-A92731	1	Adjusting Sleeve Silver TSC 5	35	20-P16380	3	SKT Set Screw M3x4 Cup
	20-A92721	1	Adjusting Sleeve Black TSC 10	36	20-P16820	1	SKT Set Screw M3x4 KCP
	20-A92751	1	Adjusting Sleeve Silver TSC 45	37	20-P18140	1	CIRCLIP M1800-0040
	20-A92741	1	Adjusting Sleeve Black TSC 90	38	20-P21490	1	Tolerance Ring