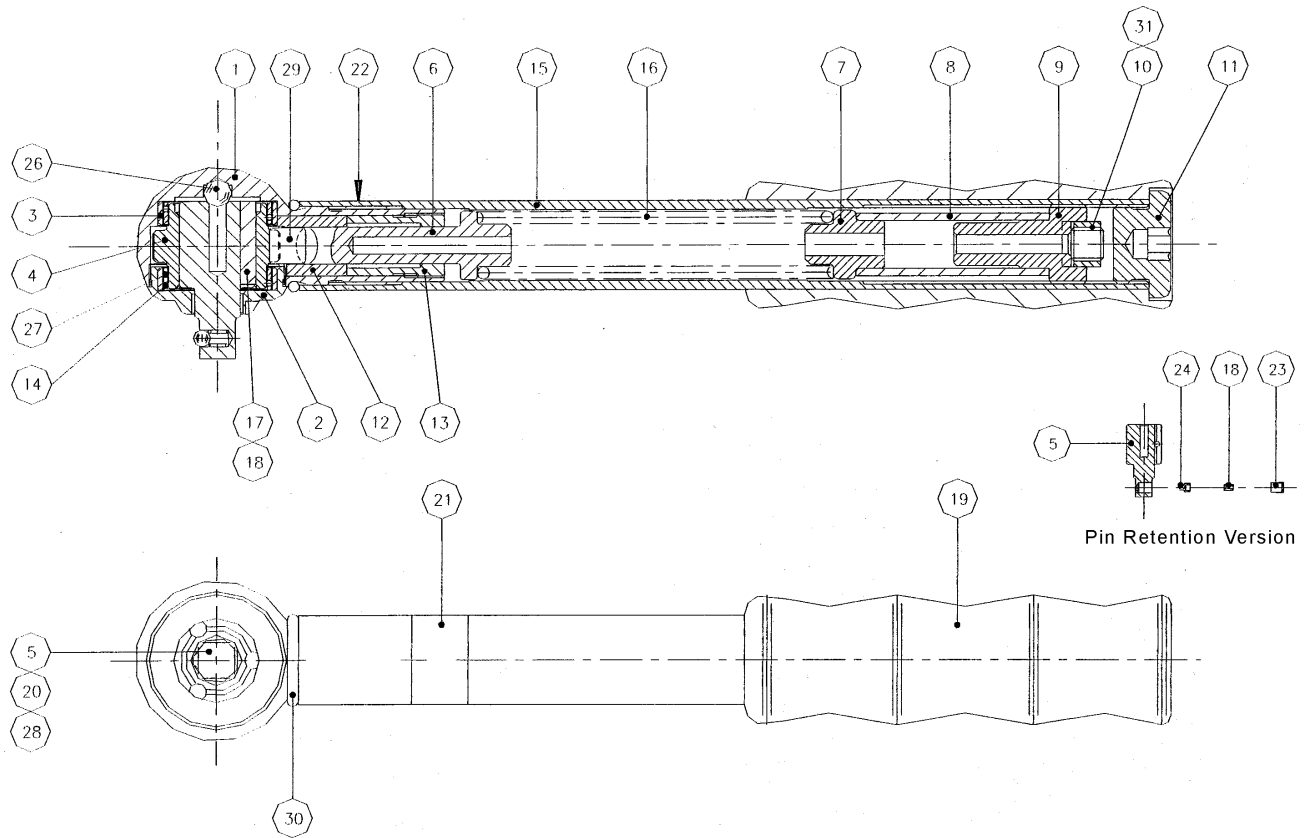


TSP Cam-Over Wrench



Ref#	Part#	Qty	Description	Ref#	Part#	Qty	Description
1	20-C92560	1	Head TSC/P	16	20-A92770	1	Main Spring TSP 5/45
2	20-B92570	1	Front Bearing Housing		20-A92780	1	Main Spring TSP 10/90
3	20-A94640	2	Liner Bush	17	20-A92670	2	Pawl
4	20-C92600	1	CAM TSC/P 5 Lobe	18	20-A59850	2 or 3	Pawl Spring (TSN 25/55) 1 extra for Pin Retention
5	20-C92611	1	Spindle TSC/P Ball Retention (# 20 & 28)	19	20-A74751	1	Handgrip (TB100C)
	20-C92612	1	Spindle TSC/P Pin Retention (# 18, 23 & 24)	20	20-A73670	1	Spring Ball Catch
6	20-A92620	1	Thrust Pin (Angled)	21	-	1	Label
7	20-A91861	1	Spacer End Spigot	22	20-A67691	1	Quality Control Label
8	20-A91851	1	Spacer Tube	23	20-A59870	1	Cup (Pin Retention)
9	20-A98070	1	Adjusting Screw	24	20-A64620	1	Pin (Pin Retention)
10	20-A98030	1	Lock	25	20-A98040	1	Adjusting Key
11	20-A91870	1	End Plug TSP	26	20-P19860	1	Steel Ball 5mm
12	20-A95160	1	Roller Guide	27	20-P21480	120	Steel Ball 1.0 Dia
13	20-A95170	1	Guide Bush	28	20-P15020	1	Steel Ball 3mm (Ball Retention)
14	20-A94940	1	Bearing Cage	29	20-P19820	1	Roller C/Chrome 1/4 x 1/4
15	20-B91882	1	Handle Tube Silver TSP 5/45	30	20-P19830	1	O Ring Silicone 70 11x2 (Red)
	20-B91883	1	Handle Tube Black TSP 10/90				