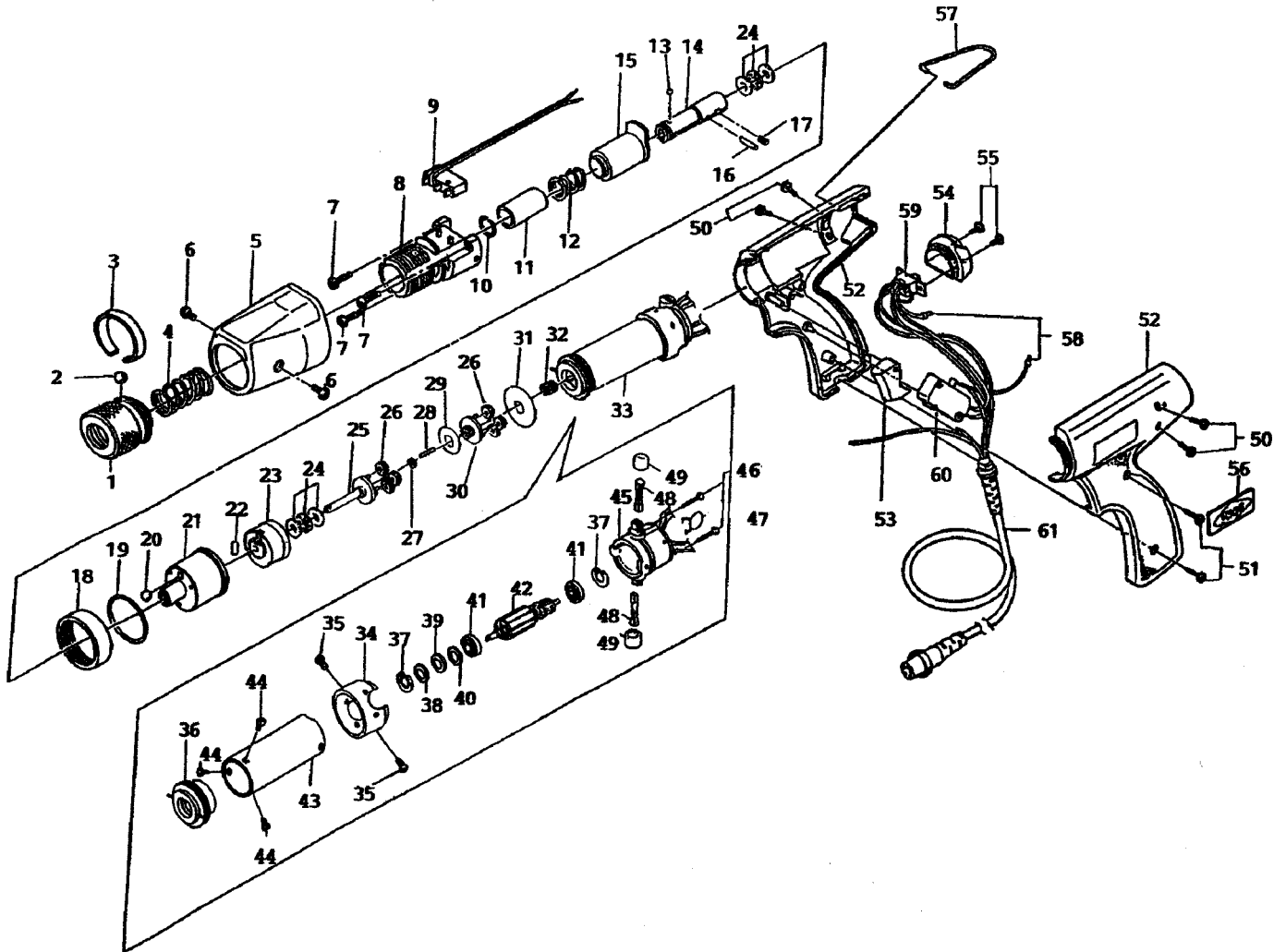


A6500P

Rev 1.0





A6500P

Ref#	Part Name	Part#	Ref#	Part Name	Part#
	Transmission Assembly 1 – 32 (w/o 9)		28	Center Pin	41-CL65-0300
	For A-6500P (Hios)	41-A65P-TM Hios Shank	29	Gear Plate	41-A65-0680
	For A-6500P (Hex)	41-A65PX-TM Hex Shank	30	Upper Planet Cage	41-A65-0310
	Torque Adjusting Nut Assembly 1 – 3	41-CL65-NT	31	Grease Seal	41-A65-0320
1	Torque Adjusting Nut	41-CL65-0010	32	Pinion Gear	41-A65-0330
2	Knotting Ball 3	41-Ball-03	33	Motor for A-6500P	41-A65P-0340
3	Knotting Ball Band	41-CL65-0030	34	Fixing Ring for CLP Motor	41-CLP65-0700
4	Torque Adjusting Spring (Yellow)	41-CL65-0040	35	Fixing Ring Set Screw 3x5.5	41-STB30X055
5	Clutch Cover	41-CLP65-0050	36	Motor Front Cover	41-CLP65-0360
6	Clutch Cover Set Screw 3x5.5 (x2)	41-STB30X055	37	Stop Ring	41-CL65-0370
7	Torque Adjusting Bolt Set Screw (x3)	41-STP26X080	38	Wave Washer	41-CL65-0380
8	Torque Adjusting Bolt	41-CL65-0090	39	Rotor Adjusting Washer 0.1	41-CL65-0390
9	Limit Switch	41-CL4-0230	40	Rotor Adjusting Washer 0.2	41-CL65-0400
	Joint Shaft Assembly 10 – 14 (Hios)	41-CL65-JS	41	Motor Bearing (x2)	41-CL65-0410
	Joint Shaft Assembly 10 – 14 (Hex)	41-CL65X-JS	42	Rotor	41-A65-0420
10	Collar Stopper	41-CL65-0110	43	Magnet Case	-----
11	Joint Shaft Collar (Hios)	41-CL65-0120	44	Motor Body Set Screw 3x4 (x3)	41-STP30X040
	Joint Shaft Collar (Hex)	41-CL65X-0120		Motor End Cover Assembly 37,41,45-49	41-A65-3470
12	Collar Spring	41-CL65-0130	45	Motor End Cover	41-CL65-0470
13	Bit Lock Ball 2.5 (Hios)	41-Ball-025	46	End Cover Set Screw 2.6x20 (x2)	41-STP26X200
	Bit Lock Ball 2.0 (Hex)	41-Ball-02	47	Capacitor	41-CL4-0441
14	Joint Shaft (Hios)	41-CL65-0150	48	Carbon Brush (x2)	41-CL65-0490
	Joint Shaft (Hex)	41-CL65X-0150	49	Carbon Brush Cap (x2)	41-A65-0500
15	Clutch Supporter	41-CL65-0160	50	Body Case Set Screw A 3x4.5 (x4)	41-STB30X045
16	Joint Shaft Lock Pin 2x11.8	41-DL10-0180	51	Body Case Set Screw B 3x12 (x2)	41-STPB30X120
17	Joint Shaft Set Screw 3x3	41-SH30X030	52	Body Case A & B	41-CLP65-0710
18	Gear Case Set Ring	41-CL65-0190	53	Switch Lever (Trigger)	41-CLP65-0640
19	O-Ring	41-CL65-0200	54	End Cover	41-CLP65-0720
	Gear Assembly 20 – 32	41-A65-GR	55	End Cover Set Screw 3x6 (x2)	41-STP30X060
20	Clutch Ball 5.5	41-Ball-055	56	Mark Label	41-A65-0070
21	Gear Case	41-CL65-0220	57	Hanger (x2)	41-CLP65-0650
22	Cam Roller 5x7	41-CL65-0230		Switch Assembly 58 – 61	41-CLP65-SW
23	Internal Gear	41-A65-0240	58	Terminal Holder	41-CL4-0550
24	Thrust Bearing 6x12 (x2)	41-CL65-0250	59	For/Rev Switch	41-CL65-0590
25	Lower Planet Cage	41-A65-0260	60	Starting Switch	41-CL4-0570
26	Planet Gear (x6)	41-A65-0270	61	5-Core Cord for CLP	41-CLP65-0660
27	Gear Washer	41-CL4-0290			

