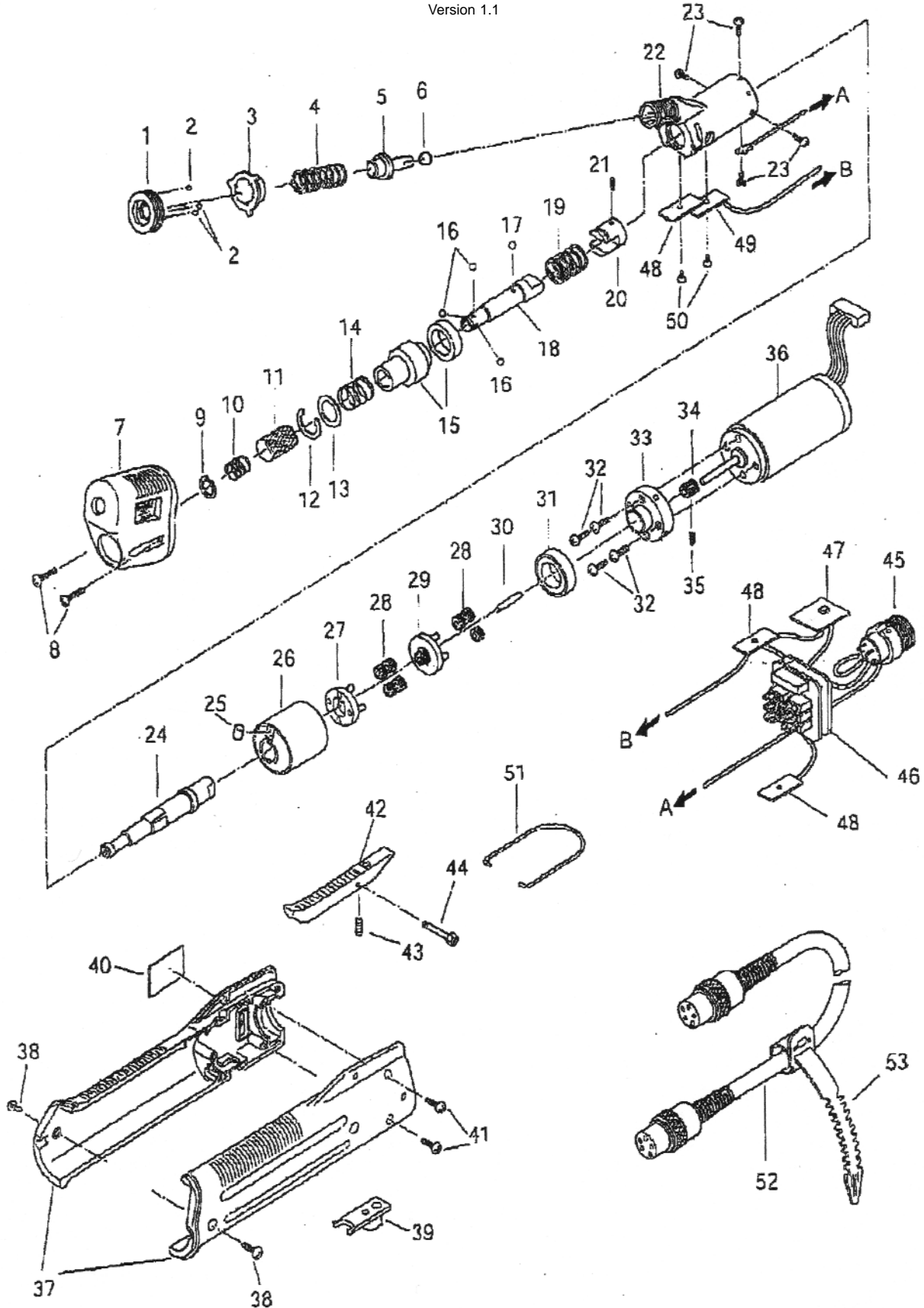


BL7000

Version 1.1





BL7000

No.	Part Number	Description	Qty.
1.	41-BL65-0010	Torque Adjusting Nut	1
2.	41-BALL-015	Steel Ball 1.5	3
3.	41-BL65-0020	Torque Adjusting Spring Holder	1
4.	41-BL7-0050	Torque Adjusting Spring	1
5.	41-BL65-0060	CLutch Panel	1
6.	41-BALL-055	Steel Ball 6.5	1
7.	41-BL65-0220	Clutch Cover	1
8.	41-SJP30x080	Set Screw 3x8	2
9.	41-CL65-0110	Collar Stopper	1
10.	41-BL65-0120	Collar Spring	1
11.	41-BL65-0110	Joint Shaft Collar	1
12.	41-BL65-0140	C-RIng	1
13.	41-BL65-0130	Washer	1
14.	41-BL65-0160	Joint Shaft Cover Spring	1
15.	41-BL65-3210	Joint Shaft Cover Set	1
16.	41-BALL-025	Steel Ball 2.5	3
17.	41-BALL-027	Steel Ball 2.7	1
18.	41-BL65-0100	Joint Shaft for H5 HIOS Drive	1
	41-BL65X-0100	Joint Shaft for 1/4 Hex Drive	1
19.	41-BL65-0170	Push Spring	1
20.	41-BL65-0200	Joint	1
21.	41-SH26x030	Hexagon Socket Set Screw 2.5x3	1
22.	41-BL65-0230	Gear Case	1
23.	41-SPP26x050N	Set Screw 2.5x5	2
24.	41-BL65-0160	Lower Planet Gear	1
25.	41-CL65-0230	Cam Roller 5x7	1
26.	41-BL65-3320	Internal Gear (w/Magnet)	1
27.	41-BL65-0340	Lower Floor	1
28.	41-BL65-0330	Planet Gear	7
29.	41-BL65-0360	Upper Planet Cage	1
30.	41-P9-0260	Center Pin	1
31.	41-BL65-0380	Bearing	1
32.	41-SJP30x080	Set Screw Screw 3x8	4
33.	41-BL65-0100	Motor Front Panel	1
34.	41-BL65-0390	Pinion Gear	1
35.	41-SH26x040	Hexagon Socket Set Screw 2.6x4	1
36.	41-BL65-0440	Motor	1
37.	41-BL65-0460	Body Case A & B	1
38.	41-SJP30x080	Set Screw 3x8	2
39.	41-BL4-3360	For/Rev Switch	1
40.	41-BL7-0070	Name Plate	1
41.	41-SJPB30x120	Set Screw 3x12	2
42.	41-BL65-3490	Switch Lever	1
43.	41-CL4-0510	Switch Lever Spring	1
44.	41-CL4-0521	Switch Lever Plunger	1
45.	41-CL4-0530	5 Pin Connector	1
	41-BL65-CC	Circuit Assembly (Items 46-49)	1
46.	Circuit Board		
47.	Sensor		
48.	Sensor		
49.	Sensor		
50.	41-SPC20x40	Set Screw 2x4	2
51.	41-CL65-0650	Hanger	1
52.	41-CL65-0660	5 Core Cord	1
53.	41-CL65-0670	Free Up Belt	1