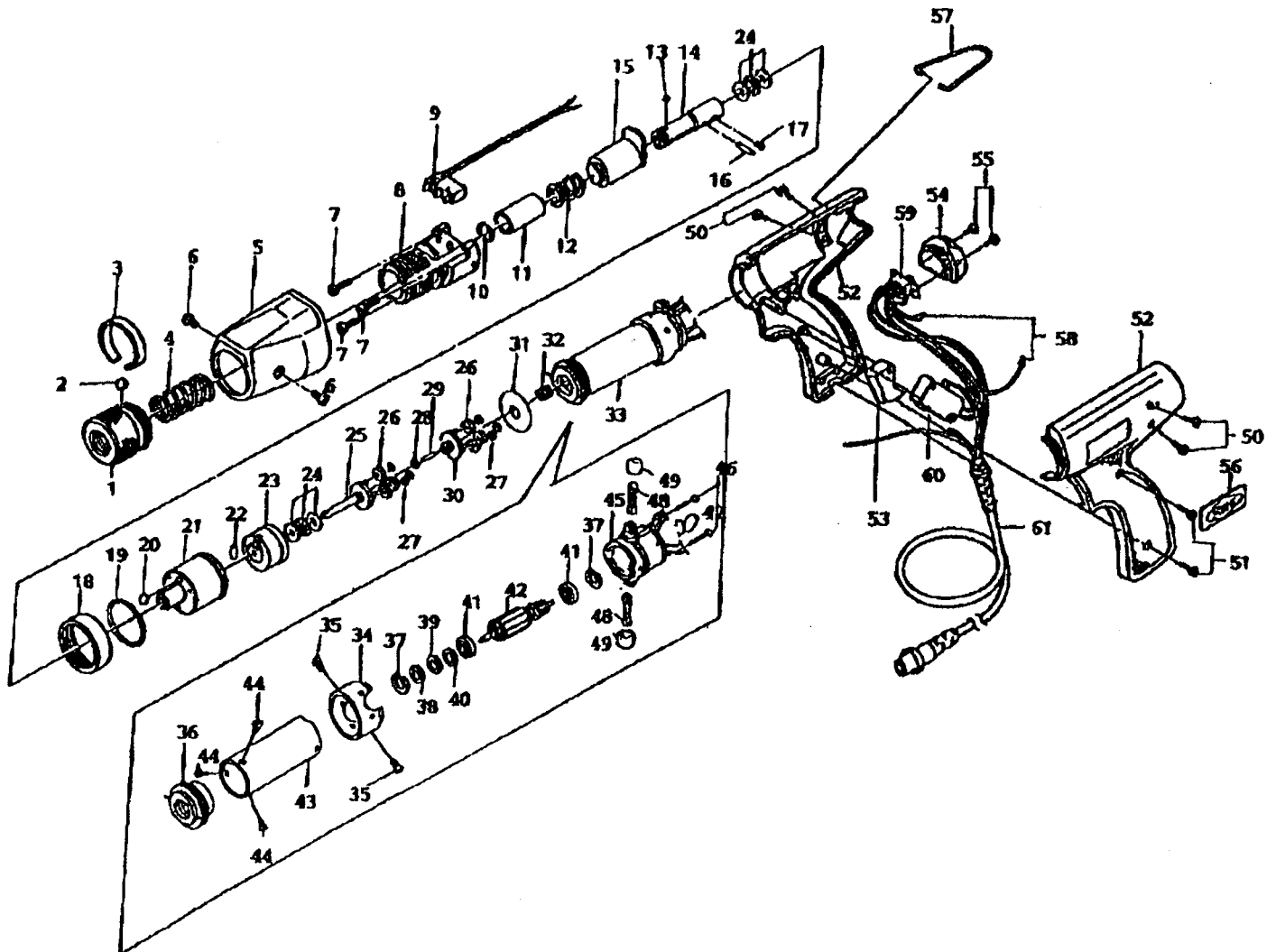


CL-6000P & CL-6500P

Rev 1.0





CL-600P & CL-650P

Ref#	Part Name	Part#	Ref#	Part Name	Part#
	Transmission Assembly 1 - 32 (w/o 9) HIOS Shank		27	E-Ring (x6)	41-CL65-0280
	For CL-6000P	41-CLP6-TM	28	Gear Washer	41-CL4-0290
	For CL-6500P	41-CLP65-TM	29	Center Pin	41-CL65-0300
	Transmission Assembly 1 - 32 (w/o 9) HEX Shank			Upper Planet Cage Assembly 30,26,27	41-CL65-3310
	For CL-6000P	41-CLPX-TM	30	Upper Planet Cage	41-CL65-0310
	For CL-6500P	41-CLP65X-TM	31	Grease Seal	41-CL65-0320
	Torque Adjusting Nut Assembly 1 - 3	41-CL65-NT	32	Pinion Gear	41-CL65-0330
1	Torque Adjusting Nut	41-CL65-0010	33	Motor for CL-6000P	41-CLP6-0340
2	Knotting Ball	41-Ball-03		Motor for CL-6500P	41-CLP65-0340
3	Knotting Ball Band	41-CL65-0030	34	Pixing Ring for CLP Motor	41-CLP-0700
4	Torque Adjusting Spring for CL-6000P (Brown)	41-CL6-0040	35	Fixing Ring Set Screw 3x5.5 (x2)	41-STB30X055
	Torque Adjusting Spring for CL-6500P (Yellow)	41-CL65-0040	36	Motor Front Cover	41-CL65-0360
5	Clutch Cover for CL-6000P	41-CLP6-0050	37	Stop Ring	41-CL65-0370
	Clutch Cover for CL-6500P	41-CLP65-0050	38	Wave Washer	41-CL65-0380
6	Clutch Cover Set Screw 3x5.5 (x2)	41-STB30X055	39	Rotor Adjusting Washer 0.1	41-CL65-0390
7	Torque Adj. Bolt Set Screw (x3)	41-STP26X080	40	Rotor Adjusting Washer 0.2	41-CL65-0400
8	Torque Adjusting Bolt	41-CL65-0090	41	Motor Bearing (x2)	41-CL65-0410
9	Limit Switch	41-CL4-0230	42	Rotor for CL-6000P	41-CL6-0420
	Joint Shaft Assembly 10 - 14 (HIOS)	41-CL65-JS		Rotor for CL-6500P	41-CL65-0420
	Joint Shaft Assembly 10 - 14 (HEX)	41-CL65X-JS	43	Magnet Case for CL-6000P & CL-6500P	-----
10	Collar Stopper	41-CL65-0110	44	Motor Body Set Screw 3x4 (x3)	41-STP30X040
11	Joint Shaft Collar (HIOS)	41-CL65-0120		Motor End Cover Assembly 37,41,45-49	41-CL65-3470
	Joint Shaft Collar (HEX)	41-CL65X-0120	45	Motor End Cover	41-CL65-0470
12	Collar Spring	41-CL65-0130	46	End Cover Set Screw 2.6x20 (x2)	41-STP26X200
13	Bit Lock Ball 2.5 (HIOS)	41-Ball-025	47	Capacitor	41-CL4-0441
	Bit Lock Ball 2.0 (HEX)	41-Ball-02	48	Carbon Brush (x2)	41-CL65-0490
14	Joint Shaft (HIOS)	41-CL65-0150	49	Carbon Brush Cap	41-CL65-0500
	Joint Shaft (HEX)	41-CL65X-0150	50	Body Case Set Screw A 3x4.5 (x4)	41-STB30X045
15	Clutch Supporter	41-CL65-0160	51	Body Case Set Screw B 3x12 (x2)	41-STPB30X120
16	Joint Shaft Lock Pin 2x11.8	41-DL10-0180	52	Body Case A & B	41-CLP65-071
17	Joint Shaft Set Screw 3x3	41-SH30X030	53	Switch Lever (Trigger)	41-CLP65-0640
18	Gear Case Set Ring	41-CL65-0190	54	End Cover	41-CLP65-0720
19	O-Ring	41-CL65-0200	55	End Cover Set Screw 3x6 (x2)	41-STP30X060
	Gear Assembly 20 - 32	41-CL65-GR	56	Mark Label for CL-6000P	41-CL6-0070
20	Clutch Ball 5.5	41-Ball-055		Mark Label for CL-6500P	41-CL65-0070
21	Gear Case	41-CL65-0220	57	Hanger (x2)	41-CLP65-0650
22	Cam Roller 5x7	41-CL65-0230		Switch Assembly 58-61	41-CLP65-SW
23	Internal Gear	41-CL65-0240	58	Terminal Holder (x2)	41-CL4-0550
24	Thrust Bearing 6x12 (x2)	41-CL65-0250	59	For/Rev switch	41-CL65-0590
	Lower Planet Cage Assembly 25 - 27	41-CL65-3260	60	Starting Switch	41-CL4-0570
25	Lower Planet Cage	41-CL65-0260	61	5-Core Cord for CLP	41-CLP-0660
26	Planet Gear (x6)	41-CL65-0270			