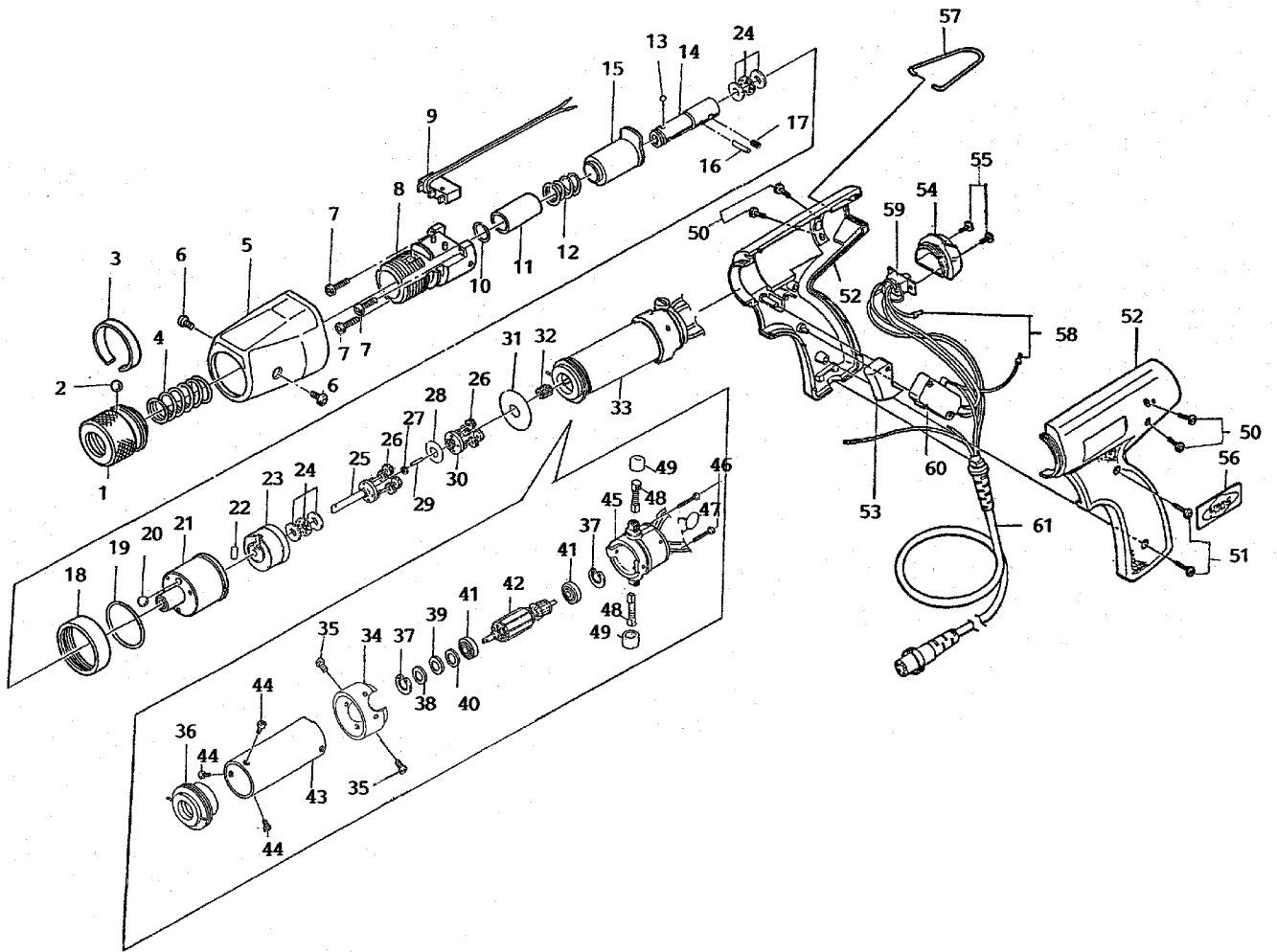


CL-7000P

Rev 1.0



CL-7000P

Ref#	Part Name	Part#	Ref#	Part Name	Part#
	Transmission Assembly 1 – 32 (w/o 9) HIOS Shank	41-CLP7-TM	28	Gear Plate B	41-CL7-0680
	Transmission Assembly 1 – 32 (w/o 9) HEX Shank	41-CLP7X-TM	29	Center Pin	41-CL7-0300
	Torque Adjusting Nut Assembly 1 – 3	41-CL65-NT		Upper Planet Cage Assembly 30, 26	41-CL7-3310
1	Torque Adjusting Nut	41-CL65-0010	30	Upper Planet Cage	41-CL7-0310
2	Knotting Ball 3	41-Ball-03	31	Grease Seal	41-CL65-0320
3	Knotting Ball Band	41-CL65-0030	32	Pinion Gear	41-CL7-0330
4	Torque Adjusting Spring (Purple)	41-CL7-0040	33	Motor for CL-7000P	41-CLP7-0340
5	Clutch Cover	41-CLP7-0050	34	Fixing Ring for CLP Motor	41-CLP65-0700
6	Clutch Cover Set Screw 3x5.5 (x2)	41-STB30X055	35	Fixing Ring Set Screw 3x5.5 (x2)	41-STB30X055
7	Torque Adj. Bolt Set Screw (x3)	41-STP26X080	36	Motor Front Cover	41-CL65-0360
8	Torque Adjusting Bolt	41-CL65-0090	37	Stop Ring	41-CL65-0370
9	Limit Switch	41-CL4-0230	38	Wave Washer	41-CL65-0380
	Joint Shaft Assembly 10 – 14 (HIOS)	41-CL65-JS	39	Rotor Adjusting Washer 0.1	41-CL65-0390
	Joint Shaft Assembly 10 – 14 (HEX)	41-CL65X-JS	40	Rotor Adjusting Washer 0.2	41-CL65-0400
10	Collar Stopper	41-CL65-0110	41	Motor Bearing (x2)	41-CL65-0410
11	Joint Shaft Collar (HIOS)	41-CL65-0120	42	Rotor	41-CL7-0420
	Joint Shaft Collar (HEX)	41-CL65X-0120	43	Magnet Case	-----
12	Collar Spring	41-CL65-0130	44	Motor Body Set Screw 3x4 (x3)	41-STP30X040
13	Bit Lock Ball 2.5 (HIOS)	220054		Motor End Cover Assembly 37,41,45-49	41-CL65-3470
	Bit Lock Ball 2.0 (HEX) (x3)	41-Ball-02	45	Motor End Cover	41-CL65-0470
14	Joint Shaft (HIOS)	41-CL65-0150	46	End Cover Set Screw 2.6x20 (x2)	41-STP26X200
	Joint Shaft (HEX)	41-CL65X-0150	47	Capacitor	41-CL4-0441
15	Clutch Supporter	41-CL65-0160	48	Carbon Brush (x2)	41-CL65-0490
16	Joint Shaft Lock Pin 2x11.8	41-DL10-0180	49	Carbon Brush Cap (x2)	41-CL65-0500
17	Joint Shaft Set Screw 3x3	41-SH30X030	50	Body Case Set Screw A 3x4.5 (x4)	41-STB30X045
18	Gear Case Set Ring	41-CL65-0190	51	Body Case Set Screw B 3x12 (x2)	41-STPB30X120
19	O-Ring	41-CL65-0200	52	Body Case A & B	41-CLP65-0710
	Gear Assembly 20 – 32	41-CL7-GR	53	Switch Lever (Trigger)	41-CLP65-0640
20	Clutch Ball 5.5	41-Ball-055	54	End Cover	41-CLP65-0720
21	Gear Case	41-CL65-0220	55	End Cover Set Screw 3x6 (x2)	41-STP30X060
22	Cam Roller 5x7	41-CL65-0230	56	Mark Label	41-CL7-0070
23	Internal Gear	41-CL7-0240	57	Hanger (x2)	41-CLP65-0650
24	Thrust Bearing 6x12 (x2)	41-CL65-0250		Switch Assembly 58 – 61	41-CLP65-SW
	Lower Planet Cage Assembly 25 – 26	41-CL7-3260	58	Terminal Holder (x2)	41-CL4-0550
25	Lower Planet Cage	41-CL7-0260	59	For/Rev Switch	41-CL65-0590
26	Planet Gear (x8)	41-CL7-0270	60	Starting Switch	41-CL4-0570
27	Gear Washer	41-CL4-0290	61	5-Core Cord for CLP	41-CLP65-0660