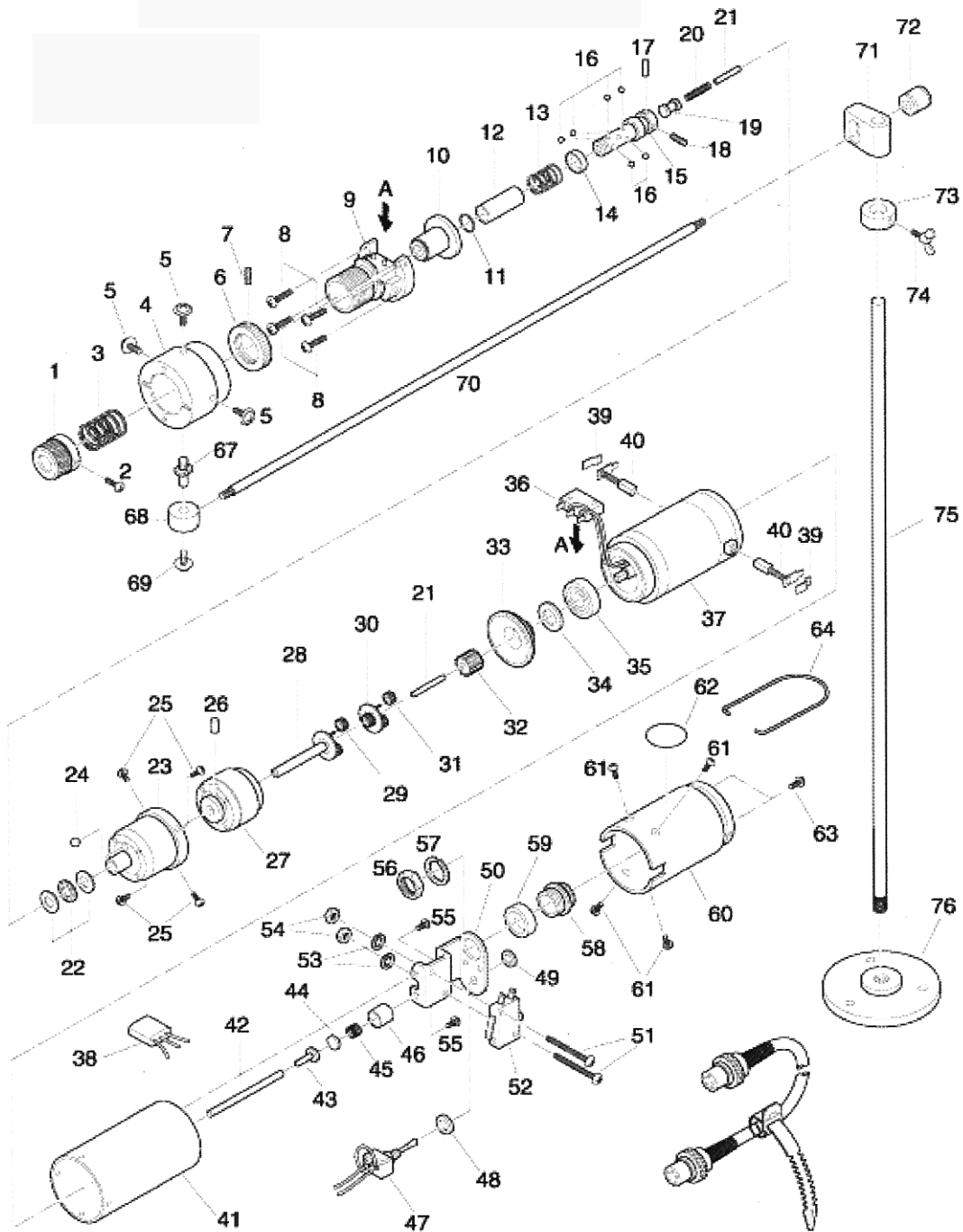


CL9000PS HT Parts List

Version 1.1



CL9000PS HT Parts List

No.	Part Number	Description	Qty.
1	41-CL9-0010	Torque Adjusting Nut	1
2	41-CL9-0020	Fixing Screw	1
3	41-F9-0040	Torque Adjusting Spring	1
	41-F98-0040	Torque Adjusting Spring	1
4	41-CL9-0040	Clutch Cover	1
5	41-STB40X080	Set Screw 4x8	2
	41-CL9-GRB-36	Transmission Assembly 6-34(W/O 11,38)	1
6	41-F9-0060	Torque Set Ring	1
7	41-SH30X030	Set Screw 3x3	1
8	41-SC30X120	Set Screw 3x12	4
9	41-CL9-0100	Torque Adjusting Bolt	1
10	41-F9-0100	Clutch Supporter	1
11	41-CL65-0110	Collar Stopper	1
12	41-CL9-0140	Joint Shaft Collar	1
13	41-CL65-0130	Collar Spring	1
14	41-CL9-0160	Ball Collar	1
15	41-CL9-0170	Joint Shaft	1
16	BALL-02	Steel Ball 2.0mm	6
17	41-CL65PS-0150	Joint Shaft Lock Pin 2x9.8	1
18	41-SH30X030	Set Screw 3x3	1
19	41-CL9-0200	Intermediate	1
20	41-CL9-0210	Intermediate Spring	1
21	41-CL9-0223	Center Pin A 1.8X40.5	1
22	41-CL816-0200	Thrust Bearing	1
23	41-CL816-0210	Gear Case	1
24	41-BALL-0635	Steel Ball 6.35mm	1
25	41-STP40X060	Set Screw 4x6	4
26	41-CL65-0230	Cam Roller 5x7	1
27	41-CL9-0280	Internal Gear	1
28	41-CL9-0300	Lower Planet Cage	1
29	41-F9-0240	Planet Gear	1
30	41-F9-0250	Upper Planet Cage	1
31	41-CL9-0223	Center Pin A 1.8X40.5	1
32	41-CL9-0350-36	Pinion Gear 36:1	1
33	41-CL9-0360	Gear Support	1
34	41-CL9-0800-02	Washer 0.2	1
	41-CL9-0800-05	Washer 0.5	1
35	41-CL9-0370	Radial Ball Bearing 6903ZZ	1
36	41-CL4-0230	Limit Switch	1
37	41-CL9-0390-36	Motor 36:1(Include 40,41)(Include 40,41)	1
38	41-ACL10-0600	Noise Filter B	1
39	41-CL9-0400	Carbon Brush Cover	1
40	41-CL9-0410	Carbon Brush(PAIR)	1
41	41-CL9-0120	Turning Grip	1
42	41-CL9-0420-36	Push Rod	1
43	41-CL9-0760	Damper Pin	1
44	41-CL9-0740	Damper Washer	1
45	41-CL9-0750	Damper Spring	1
46	41-CL9-0730	Damper	1
	41-CL9-CC	Circuit Assembly 47 - 59 (W/O 55)	1
47	41-CL9-0430	For/Rev Switch W/Neutral(Include 48,49)(Include48,49)	1
50	41-CL9-0450	Setting Panel	1
51	41-STP30X160	Set Screw 3x16	2
52	41-CL65PS-0610	Starting Switch	1
53	41-SW30	Washer 3mm	2
54	41-SN30	Hexagonal Nut M3	2
55	41-STBB40X060	Set Screw 4x6	1

CL9000PS HT Parts List

No.	Part Number	Description	Qty.
58	41-CL9-0550	5 - Pin Terminal (Include 56,57) (Include 56,57)	1
59	41-CL9-0540	Up Ring	1
60	41-CL9-0560	Switch Cover	1
61	41-STPB30X100	Set Screw 3x10	4
62	41-CL9-0580	Name Plate	1
63	41-STB30X055	Set Screw 3x5.5	1
64	41-CL65-0650	Hanger	1
65	41-CL9-0610	5 - Cord of Same Connector Ends	1
66	41-CL65-0670	Free-Up Belt	1
	41-CL9-SAS	Stand Arm Set 67 - 76	1
	41-CL9-ARM	Arm Assembly 67 - 72	1
67	41-CL9-0630	Turret Shaft	1
68	41-CL9-0640	Turret	1
69	41-SPW40X080	Set Screw 4x8	1
70	41-CL9-0660	Sliding Arm	1
71	41-CL9-0671	Turning Holder	1
72	41-CL9-0680	Arm-edge Knob	1
	41-CL9-STD	Stand Assembly 73 - 76	1
73	41-CL9-0690	Station	1
74	41-CL9-0700	Station Stopper	1
75	41-CL9-0710	Column	1
76	41-CL9-0720	Stand Base	1