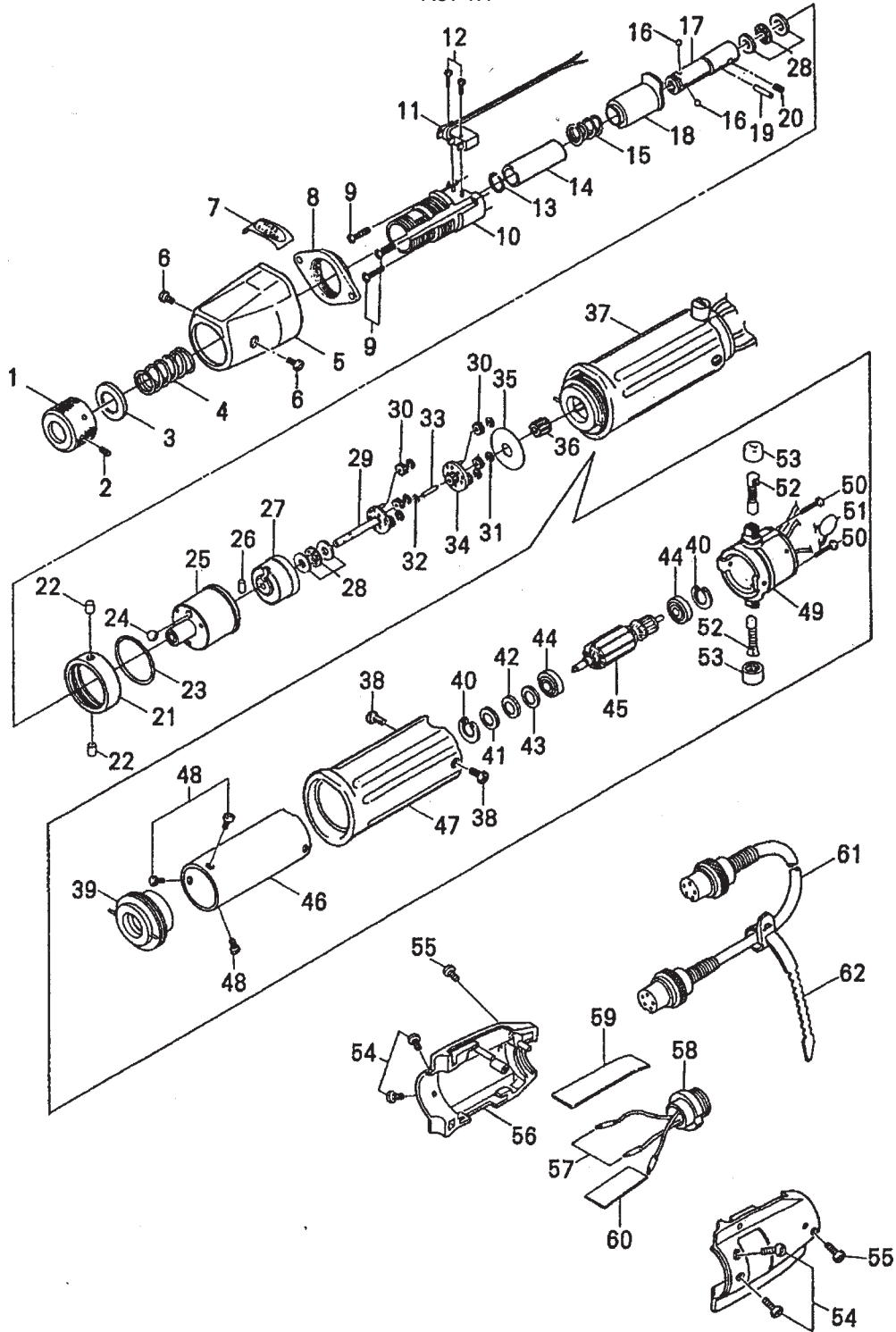


# CLF-6000XH & 6500XH

Rev 1.1



## CLF-6000XH & 6500XH

Ref #	Part Name	Part #	Ref #	Part Name	Part #
	<b>Transmission Assembly</b>			<b>Upper Planet Cage Assembly</b>	41-CL65-3310
	<b>1-36 (w/o 11,12)</b>			<b>34, 30, 32</b>	
	CLF-6000	41-CLF6X-TM	34	Upper Planet Cage	41-CL65-0310
	CLF6500	41-CLF65X-TM	35	Grease Seal	41-CL65-0320
1	Torque Adjusting Screw	41-CLF65-0010	36	Pinion Gear	41-CL65-0330
2	Nut Fixing Screw	41-CLQ4-0060	37	Motor for CLF-6000	41-CL6-0340
3	Spring Holder	41-CLF65-0030		Motor for CLF-6500	41-CL65-0350
4	Torque Adjusting Spring		38	Motor Case Set Screw 3x5.5 (x2)	41-STB30X055
	For CLF-6000 (Brown)	41-CLF6-0040	39	Motor Front Cover	41-CL65-0360
	For CLF-6500 (Yellow)	41-CLF65-0050	40	Stop Ring	41-CL65-0370
5	Clutch Cover	41-CL65-0050	41	Wave Washer	41-CL65-0380
6	Clutch Cover Set Screw 3x5.5 (x2)	41-STB30X055	42	Rotor Adjusting Washer 0.1	41-CL65-0390
7	Mark Label for CLF-6000	41-CL6-0070	43	Rotor Adjusting Washer 0.2	41-CL65-0400
	Mark Label for CLF-6500	41-CLF65XH-0080	44	Motor Bearing (x2)	41-CL65-0410
8	Flange	41-CLF65-0080	45	Rotor for CLF-6000	41-CL6-0420
9	Torque Adjusting Bolt Set Screw (x3)	41-STP26X080		Rotor for CLF-6500	41-CL65-0420
10	Torque Adjusting Bolt	41-CLF65-0100	46	Magnet Case for CLF-6000	
11	Limit Switch	41-CL4-230		Magnet Case CLF-6500	
12	Limit Switch Set Screw 1.7x6 (X2)	41-STP17X060	47	Motor Case for CLF-6000	41-CL6-0440
	Joint Shaft Assembly 13-17	41-CLF65X-JS		Motor Case CLF-6500	41-CL65-0440
13	Collar Stopper	41-CL65-0110	48	Motor Body Set Screw 3x4 (x3)	41-STP30X040
14	Joint Shaft Collar	41-CLF65XN-0140		<b>Motor End Cover Assembly</b>	41-CL65-3470
15	Collar Spring	41-CL65-0130		<b>40,44, 49-53</b>	
16	Bit Lock Ball 2.0 (x3)	41-Ball-02	49	Motor End Cover	41-CL65-0470
17	Joint Shaft (Hex Shank)	41-CL65X-0150	50	End Cover Set Screw 2.6x20 (x2)	41-STP26X200
18	Clutch Supporter	41-CL65-0160	51	Capacitor	41-CL4-0440
19	Joint Shaft Lock Pin 2x11.8	41-DL10-0180	52	Carbon Brush (x2)	41-CL65-0490
20	Joint Shaft Set Screw 3x3	41-SH30X30	53	Carbon Brush Cap (x2)	41-CL65-0500
21	Gear Case Set Ring	41-CL65-0190	54	Switch Cover Set Screw 3x8 (x4)	41-STB30X080
22	Gear Case Set Ring Lock Ring Pin (x2)	41-CLF65-0670		Switch Assembly 55-60	41-CLF65HI-SW
23	O-Ring	41-CL65-0200	55	Switch Cover Joint Screw 2.6x5 (x2)	41-STP26X050
	Gear Assembly 24-36	41-CL65-GR	56	Switch Cover A & B	41-CL65-0530
24	Clutch Ball 5.5	41-Ball-055	57	Terminal Holder	41-CL4-0550
25	Gear Case	41-CL65-0220	58	5-Pin Connector	41-CL4-0580
26	Cam Roller 5x7	41-CL65-0230	59	Side Cover A	
27	Internal Gear	41-CL65-0240	60	Side Cover B	
28	Thrust Bearing 6x12 (x2)	41-CL65-0250	61	5-Core Cord w/Connector	41-CLF65-0620
	<b>Lower Planet Cage Assembly</b>	41-CL65-3260		in both ends 3M	
	<b>29-31</b>		62	Free-up Belt	41-CL65-0670
29	Lower Planet Cage	41-CL65-0260			
30	Planet Gear (x6)	41-CL65-0270			
31	E-Ring (x6)	41-CL65-0280			
32	Gear Washer	41-CL4-0290			
33	Center Pin	41-CL65-0300			