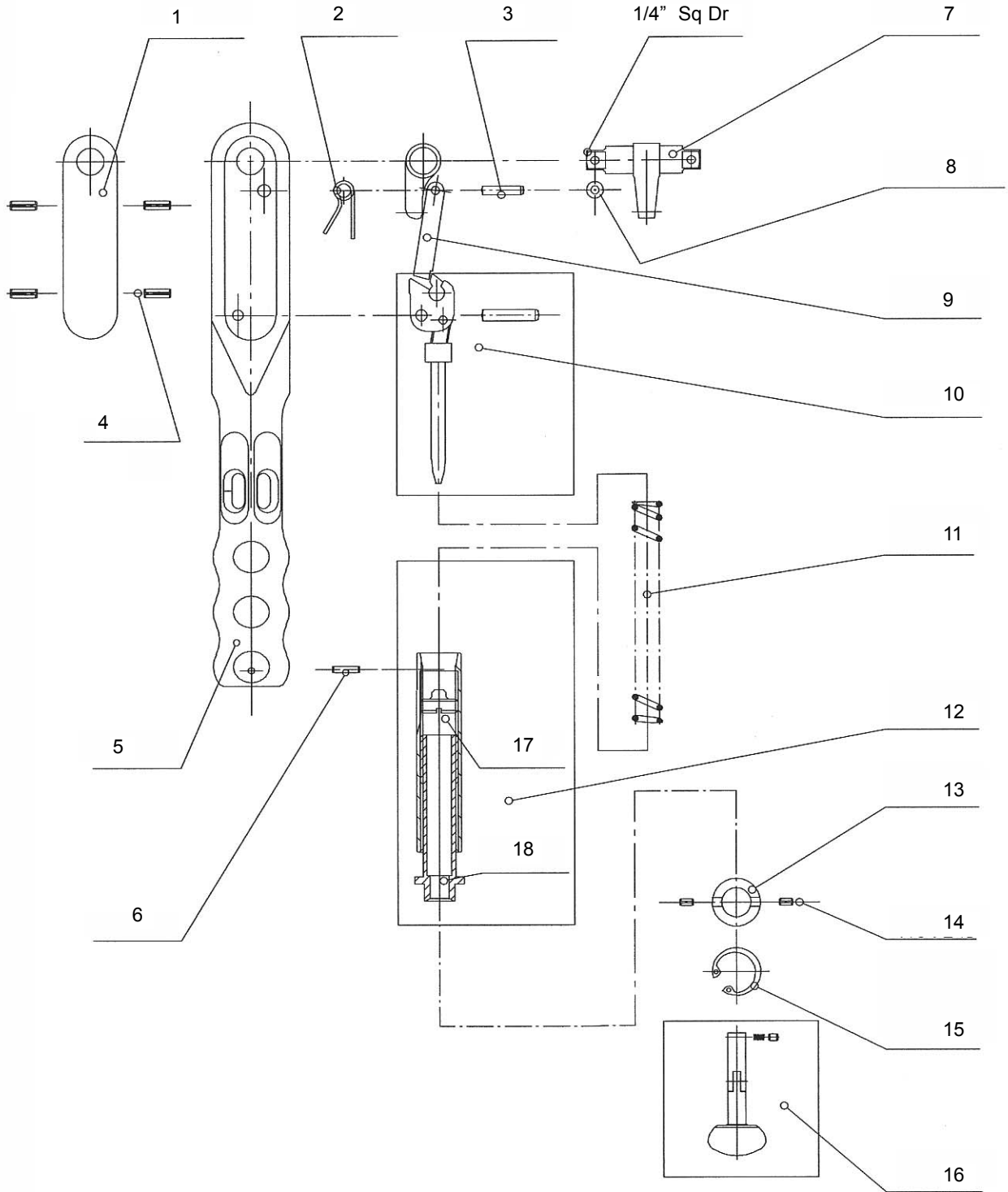


DM 30-D Click Wrench (Adjustable)

Rev. 1.0



DM 30-D Click Wrench (Adjustable)

Ref #	Part #	Quantity	Description
1	28-1183605	1	Lid DREMOMETER AM
2	28-1183664	1	Wing spring DREMOMETER AM
3	28-1183176	1	Cylindric Pin 6x2 for DREMOMETER AM
4	28-1180223	4	Dowel pin ISO 8752 4 x 12
5	28-1183591	1	Body DREMOMETER AM
6	28-1180231	1	Elastic pin ISO 8752 3x4
7	28-1182269	1	Two sided lever 1/4" AM compl.
8	28-1183796	1	Shim 4 x 8 x 0.2 for DREMOMETER AM
9	28-1182242	1	Final Lever DREMOMETER AM
10	28-1196049	1	Angle Lever DREMOMETER AM compl.
11	28-1183761	1	Compression spring DREMOMETER AM
12	28-1182277	1	Tube AM kompl.
13	28-1189700	1	Thrust washer A-F
14	28-1180215	2	Elastic pin 3x6
15	28-1180258	1	Safety ring 22 x 1
16	28-1182234	1	Hexagon key DREMOMETER AM (NEW) complete
17	28-1180177	1	8563-10 Adjusting screw
18	28-1183621	1	Spindle Screw DREMOMETER AM