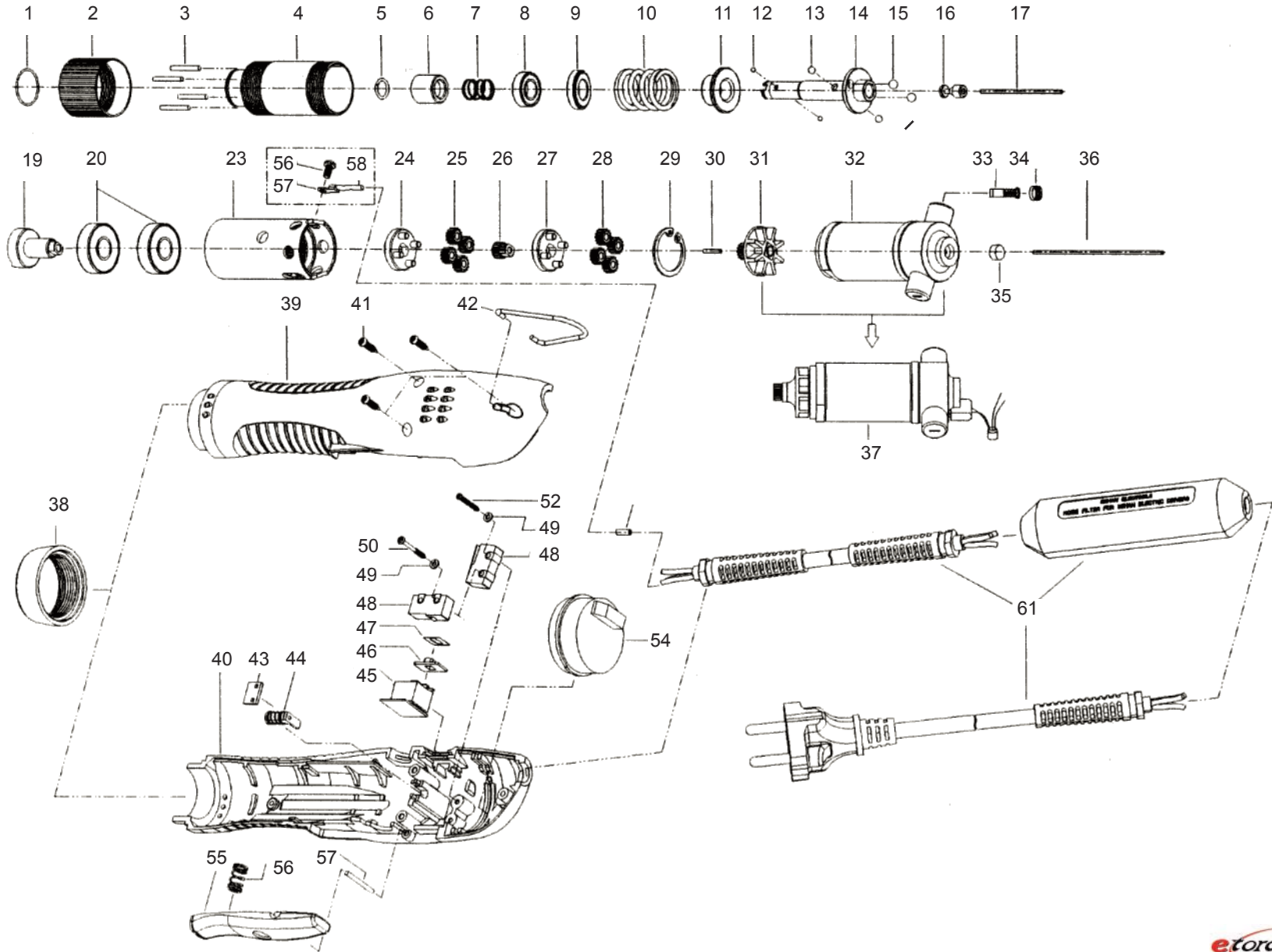


E-DRIV

Model E251-A (110v and 220v models)

Version 1.4



ISO 9001



E - D R I V

Model E251-A (110v and 220v models)

Version 1.4

	Part #	Item Description	Qty		Part #	Item Description	Qty
1	14-500100	C-RING	1	37	14-608110	MOTOR SET (110V)	1
2	14-500200	TORQUE ADJUSTER	1		14-608100	MOTOR SET (220V)	1
3	14-500300	NIDDLE PIN	4	38	14-500251	HOUSING NUT	1
4	14-500400	CLUTCH CASE	1	39	14-502002	LEVER HOUSING (A) GREEN	1
5	14-500111	BIT SOCKET RING	1	40	14-502012	LEVER HOUSING (B) GREEN	1
6	14-500501	BIT COLLAR	1	41	14-502300	SCREW (3*12)	3
7	14-500620	COLLAR SPRING	1	42	14-500680	HOOK	1
8	14-500702	OILESS BEARING	1	43	14-502160	RELEASE COVER	1
9	14-508040	RETAINER ASSEMBLY	1	44	14-501900	RELEASE ASSEMBLY	1
10	14-501010	TORQUE SPRING(D2.3) for E251-A	1	45	14-502411	F/R SWITCH	1
11	14-501101	UPPER PLATE	1	46	14-502130	SWITCH COVER H3.7	1
12	14-500900	STEEL BALL 2MM	2	47	14-502150	SWITCH COVER LABEL T0.2	1
13	14-500920	STEEL BALL 1/8"	2	48	14-502400	MICRO SWITCH SS5GL	2
14	14-501202	BIT SOCKET A (1/4")	1	49	14-502330	SPRING WASHER M2.3	2
15	14-500920	STEEL BALL	2	50	14-502320	SCREW (2.3*20)	1
16	14-501303	FLOATING CUP A	1	52	14-502310	SCREW (2.0*16)	1
17	14-500310	PIN (1.7x48)	1	53	14-502620	SLEEVE	1
19	14-501400	CLUTCH	1	54	14-502505	CONTROL PCB ASSEMBLY (110V)	1
20	14-500750	BEARING(9-25)	2		14-502504	CONTROL PCB ASSEMBLY (220V)	1
23	14-501501	GEAR CASE	1	55	14-502100	LEVER	1
24	14-501600	GEAR HOLDER	2	56	14-500650	LEVER SPRING	1
25	14-501700	2ND IDLE GEAR	4	57	14-500340	LEVER PIN	1
26	14-501750	PINION GEAR	1	61	14-502217	POWER CORD 110v (NOISE FILTER/UL)	1
27	14-501600	GEAR HOLDER	1		14-502219	POWER CORD 220v (NOISE FILTER/CE)	1
28	14-501701	1ST IDLE GEAR	4	62	14-509950	EARTH SCREW (M3X4)	1
29	14-500160	SNAP RING	1	63	14-509960	EARTH RING (M3)	1
30	14-500320	CERAMIC PIN	1	64	14-509970	EARTH WIRE	1
31	14-501771	FAN GEAR	1				
32	14-501803	MOTOR ASSEMBLY (110V)	1				
	14-501802	MOTOR ASSEMBLY (220V)	1				
33	14-501810	CARBON BRUSH (110V)	2				
	14-501811	CARBON BRUSH (220V)	2				
34	14-501830	BRUSH CAP	2				
35	14-501890	PIN GUIDE	1				
36	14-500330	LONG PIN	1				