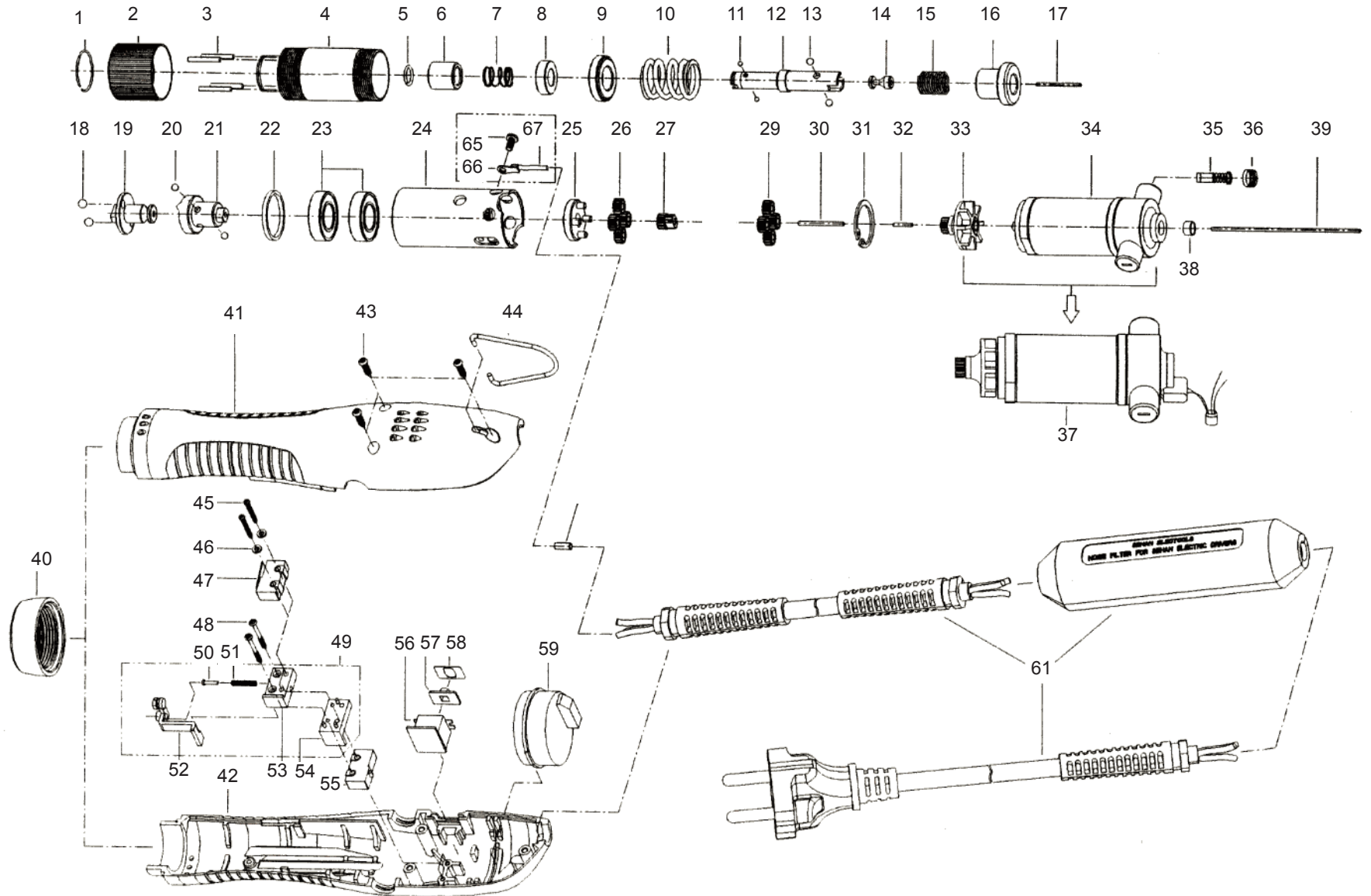


# E-DRIV

Model E301PS (110v and 220v models)

Version 1.4



ISO 9001



# E - D R I V

Model E301PS (110v and 220v models)

Version 1.4

	Part #	Item Description	Qty		Part #	Item Description	Qty
1	14-500100	C-RING	1	36	14-501830	BRUSH CAP	2
2	14-500200	TORQUE ADJUSTER	1	37	14-608110	MOTOR SET (110V)	1
3	14-500300	NIDDLE PIN	4		14-608100	MOTOR SET (220V)	1
4	14-500400	CLUTCH CASE	1	38	14-509100	PIN GUIDE	1
5	14-500111	BIT SOCKET RING	1	39	14-500330	LONG PIN	1
6	14-500501	BIT COLLAR	1	40	14-500251	HOUSING NUT	1
7	14-500620	COLLAR SPRING	1	41	14-502020	LEVER HOUSING (A) GREEN	1
8	14-500702	OILESS BEARING	1	42	14-502030	LEVER HOUSING (B) GREEN	1
9	14-508040	RETAINER ASSEMBLY	1	43	14-502300	SCREW (M3X12L)	3
10	14-501000	TORQUE SPRING(D2.5) for E301	1	44	14-500680	HOOK	1
11	14-500900	STEEL BALL 2MM	2	45	14-502310	SCREW (M2X16L)	2
12	14-508005	BIT SOCKET A (1/4")	1	46	14-502330	SPRING WASHER (M2.3)	2
13	14-500910	STEEL BALL	2	47	14-502400	MICRO SWITCH	1
14	14-501310	FLOATING CUP A	1	48	14-502320	SCREW (M2.3X20L)	2
15	14-500690	SPRING	1	49	14-608700	PUSHER ASSEMBLY	1
16	14-508050	UPPER PLATE	1	50	14-502180	GUIDE PIN	1
17	14-508090	FIRST PIN	1	51	14-502170	SPRING	1
18	14-500920	STEEL BALL	2	52	14-502185	PUSHER	1
19	14-508060	CLUTCH A	1	53	14-502190	SWITCH HOLDER (A)	1
20	14-500910	STEEL BALL	2	54	14-502191	SWITCH HOLDER (B)	1
21	14-508070	CLUTCH B	1	55	14-502401	MICRO SWITCH	1
22	14-508080	SPACER	1	56	14-502411	F/R SWITCH	1
23	14-509910	BEARING	2	57	14-502130	SWITCH COVER	1
24	14-501501	GEAR CASE	1	58	14-502150	SWITCH COVER LABEL	1
25	14-501600	GEAR HOLDER	2	59	14-502505	CONTROL PCB ASSEMBLY (110V)	1
26	14-501700	2ND IDLE GEAR	4		14-502504	CONTROL PCB ASSEMBLY (220V)	1
27	14-501750	PINION GEAR	1	60	14-502620	SLEEVE	1
29	14-501701	1ST IDLE GEAR	4	64	14-502217	POWER CORD 110v (NOISE FILTER/UL)	1
30	14-509000	2ND PIN	1		14-502219	POWER CORD 220v (NOISE FILTER/CE)	1
31	14-500160	SNAP RING R22	1	65	14-509950	EARTH SCREW (M3X4)	1
32	14-500320	CERAMIC PIN	1	66	14-509960	EARTH RING (M3)	1
33	14-501771	FAN GEAR	1	67	14-509970	EARTH WIRE	1
34	14-501803	MOTOR ASSEMBLY (110V)	1				
	14-501802	MOTOR ASSEMBLY (220V)	1				
35	14-501810	CARBON BRUSH (110V)	2				
	14-501811	CARBON BRUSH (220V)	2				