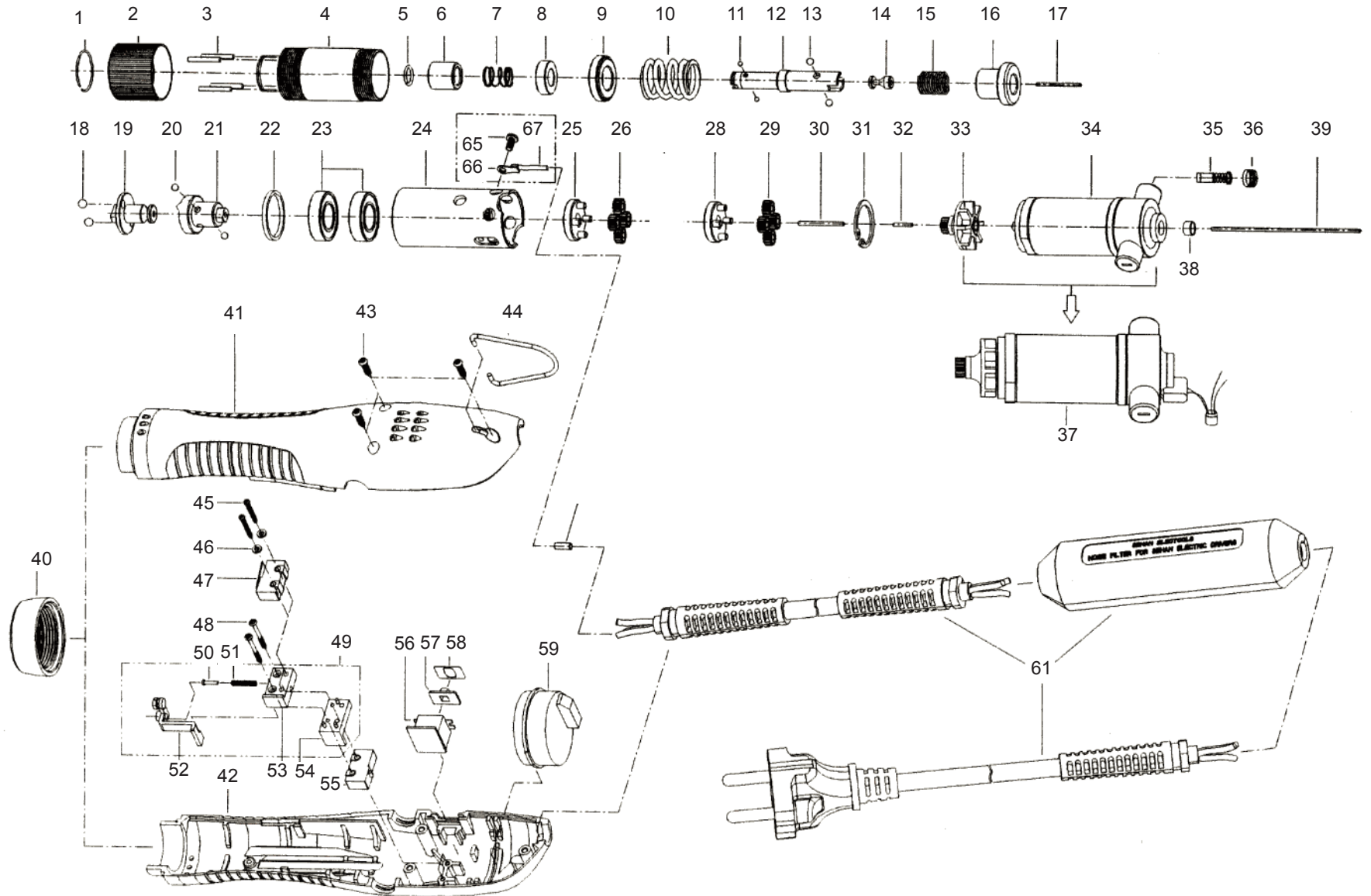


E-DRIV

Model E301PS (HT) 110v and 220v models

Version 1.4



ISO 9001



E - D R I V

Model E301PS (HT) 110v and 220v models

Version 1.4

| | Part # | Item Description | Qty | | Part # | Item Description | Qty |
|----|-----------|--------------------------------|-----|----|-----------|-----------------------------------|-----|
| 1 | 14-500100 | C-RING | 1 | 36 | 14-501830 | BRUSH CAP | 2 |
| 2 | 14-500200 | TORQUE ADJUSTER | 1 | 37 | 14-608111 | MOTOR SET (110V) | 1 |
| 3 | 14-500300 | NIDDLE PIN | 4 | | 14-608101 | MOTOR SET (220V) | 1 |
| 4 | 14-500400 | CLUTCH CASE | 1 | 38 | 14-509100 | PIN GUIDE | 1 |
| 5 | 14-500111 | BIT SOCKET RING | 1 | 39 | 14-500330 | LONG PIN | 1 |
| 6 | 14-500501 | BIT COLLAR | 1 | 40 | 14-500251 | HOUSING NUT | 1 |
| 7 | 14-500620 | COLLAR SPRING | 1 | 41 | 14-502023 | LEVER HOUSING (A) GREEN | 1 |
| 8 | 14-500702 | OILESS BEARING | 1 | 42 | 14-502033 | LEVER HOUSING (B) GREEN | 1 |
| 9 | 14-508040 | RETAINER ASSEMBLY | 1 | 43 | 14-502300 | SCREW (M3X12L) | 3 |
| 10 | 14-501030 | TORQUE SPRING(D2.7) for E301HT | 1 | 44 | 14-500680 | HOOK | 1 |
| 11 | 14-500900 | STEEL BALL 2MM | 2 | 45 | 14-502310 | SCREW (M2X16L) | 2 |
| 12 | 14-508005 | BIT SOCKET A (1/4") | 1 | 46 | 14-502330 | SPRING WASHER (M2.3) | 2 |
| 13 | 14-500910 | STEEL BALL | 2 | 47 | 14-502400 | MICRO SWITCH | 1 |
| 14 | 14-501310 | FLOATING CUP A | 1 | 48 | 14-502320 | SCREW (M2.3X20L) | 2 |
| 15 | 14-500690 | SPRING | 1 | 49 | 14-608700 | PUSHER ASSEMBLY | 1 |
| 16 | 14-508050 | UPPER PLATE | 1 | 50 | 14-502180 | GUIDE PIN | 1 |
| 17 | 14-508090 | FIRST PIN | 1 | 51 | 14-502170 | SPRING | 1 |
| 18 | 14-500920 | STEEL BALL | 2 | 52 | 14-502185 | PUSHER | 1 |
| 19 | 14-508060 | CLUTCH A | 1 | 53 | 14-502190 | SWITCH HOLDER (A) | 1 |
| 20 | 14-500910 | STEEL BALL | 2 | 54 | 14-502191 | SWITCH HOLDER (B) | 1 |
| 21 | 14-508070 | CLUTCH B | 1 | 55 | 14-502401 | MICRO SWITCH | 1 |
| 22 | 14-508080 | SPACER | 1 | 56 | 14-502411 | F/R SWITCH | 1 |
| 23 | 14-509910 | BEARING | 2 | 57 | 14-502130 | SWITCH COVER | 1 |
| 24 | 14-501501 | GEAR CASE | 1 | 58 | 14-502150 | SWITCH COVER LABEL | 1 |
| 25 | 14-501620 | GEAR HOLDER | 1 | 59 | 14-502505 | CONTROL PCB ASSEMBLY (110V) | 1 |
| 26 | 14-501702 | 2ND IDLE GEAR | 3 | | 14-502504 | CONTROL PCB ASSEMBLY (220V) | 1 |
| 28 | 14-501610 | 1ST GEAR HOLDER | 1 | 60 | 14-502620 | SLEEVE | 1 |
| 29 | 14-501703 | 1ST IDLE GEAR | 3 | 64 | 14-502217 | POWER CORD 110v (NOISE FILTER/UL) | 1 |
| 30 | 14-509000 | 2ND PIN | 1 | | 14-502219 | POWER CORD 220v (NOISE FILTER/CE) | 1 |
| 31 | 14-500160 | SNAP RING R22 | 1 | 65 | 14-509950 | EARTH SCREW (M3X4) | 1 |
| 32 | 14-500320 | CERAMIC PIN | 1 | 66 | 14-509960 | EARTH RING (M3) | 1 |
| 33 | 14-501772 | FAN GEAR | 1 | 67 | 14-509970 | EARTH WIRE | 1 |
| 34 | 14-501803 | MOTOR ASSEMBLY (110V) | 1 | | | | |
| | 14-501802 | MOTOR ASSEMBLY (220V) | 1 | | | | |
| 35 | 14-501810 | CARBON BRUSH (110V) | 2 | | | | |
| | 14-501811 | CARBON BRUSH (220V) | 2 | | | | |