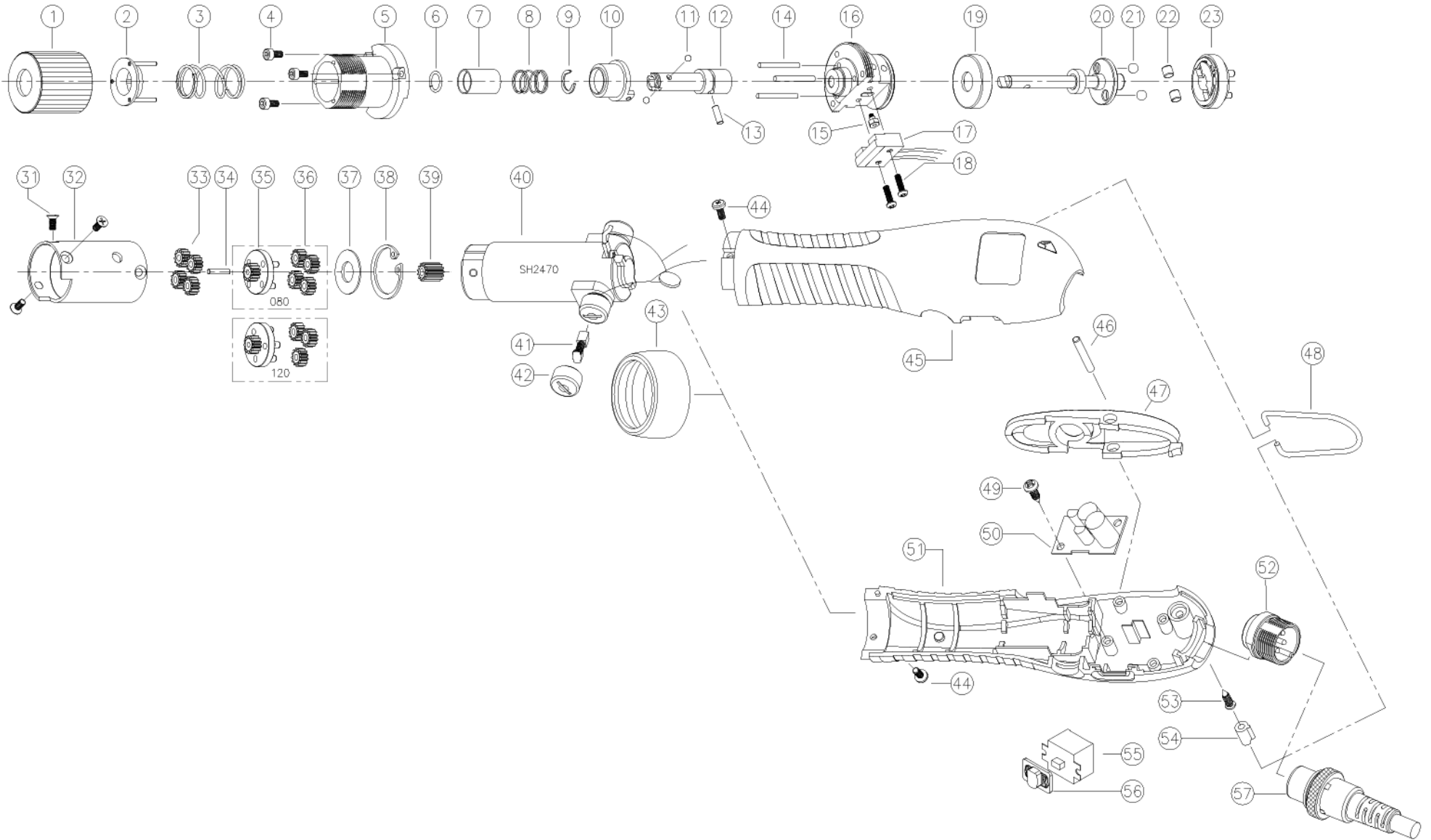


EF080P-A & EF120P Push-to-Start (Standard & ESD Models)

3.12.08
Version 1



EF080P-A & EF120P Push-to-Start (Standard & ESD Models)

3.12.08
Version 1

No.	Part Number	Description	Qty.	No.	Part Number	Description	Qty.
1	14-PFE1801	Torque Adjuster	1	40	14-PEF4005	Motor Assembly	1
2	14-PFE1132	Torque Spring Holder Assembly	1	41	14-PEF4055	Carbon Brush	2
3		Torque Spring for EF080 models		42	14-PEF4057	Brush Cap	2
	14-PFE1817	Torque Spring Bronze	1	43	14-PEF1802	Housing Nut	1
	14-PFE1815	Torque Spring Silver	1	44	14-PSW2202	Screw Philips m2.6x5L	2
		Torque Spring for EF120 models		45	14-PEF1827	Upper Housing	1
	14-PFE1817	Torque Spring Bronze	1		14-PEF1827A	Upper Housing (for ESD models)	1
	14-PFE1816	Torque Spring Black	1	46	14-PEF1840	Lever Pin	1
4	14-PSW2201	Wrench Bolt (M Hex M2.5x5L)	3	47	14-PEF1819	Attachment	1
5	14-PFE1131	Top Cover Assembly	1		14-PEF1819A	Attachment (for ESD models)	1
6	14-PFE1973	Bit Socket (for 1/4 Hex Drive)	1	48	14-PEK1803	Hook	1
7	14-PFE1410	Bit Collar (for 1/4 Hex Drive)	1	49	14-PSW2702	Screw Philips 3.5x8L	1
8	14-PFE1964	Collar Spring (for 1/4 Hex Drive)	1	50	14-PEKZ515	Power PCB Assembly	1
9	14-PFE1955	C-Ring	1	51	14-PEF1828	Lower Housing	1
10	14-PEF1123	Sleeve Assembly	1		14-PEF1828A	Lower Housing (for ESD models)	1
11	14-PAL1927	Steel Ball 1.5 (for 1/4 Hex Drive)	2	52	14-PELZ301	5 Pin Connector	1
12	14-PFE1412	Bit Socket (for 1/4 Hex Drive)	1	53	14-PSW2701	Screw Torx 3x12L	1
13	14-PFE1413	Holder Pin 2.5x7.5L	1	54	14-PEF1836	Insert	1
14	14-PFE1327	Needle Pin	3		14-PEF1836A	Insert (for ESD models)	1
15	14-PFE1113	Magnet Holder Assembly	1	56	14-PELS102	Slide Switch Assembly	1
16	14-PFE1119	Bearing Cover Assembly (PS)	1	57	14-PAL1130	Switch Cover Assembly	1
17	14-PFEZ512	Sensor Assembly (PS)	1	58	14-PELZ905	Cable 5 Pin (3m Standard)	1
18	14-PSW2211	Screw Phillips M2.3x8L	2				
19	14-PFE1319	Slide Ring	1				
20	14-PFE1114	Push Shaft Assembly	1				
21	14-PAL1932	Steel Ball	2				
22	14-PFE1910	Roller	2				
23	14-PFE1105	Clutch Assembly (EF080)	1				
	14-PFE1106	Clutch Assembly (EF120)	1				
31	14-PSW2207	Screw Philips M2.6x6L	3				
32	14-PFE1201	Gear Case	1				
33	14-PFE1211	2nd Idle Gear (EF080)	4				
	14-PFE1212	2nd Idle Gear (EF120)	4				
34	14-PFE1915	Center Pin	1				
35	14-PFE1102	Gear Holder Assembly (EF080)	1				
	14-PFE1103	Gear Holder Assembly B (EF120)	1				
36	14-PFE1216	1st Idle Gear 12T (EF080)	4				
	14-PFE1217	1st Idle Gear 13T (EF080)	3				
37	14-PFE1947	Washer	1				
38	14-PFE1903	Snap Ring	1				
39	14-PFE1235	Pinion Ring (EF080)	1				
	14-PFE1236	Pinion Ring (EF120)	1				



mountz
the torque tool specialists.

Phone: 408-292-2214
Fax: 408-292-2733

sales@etorque.com

www.etorque.com



ISO 9001