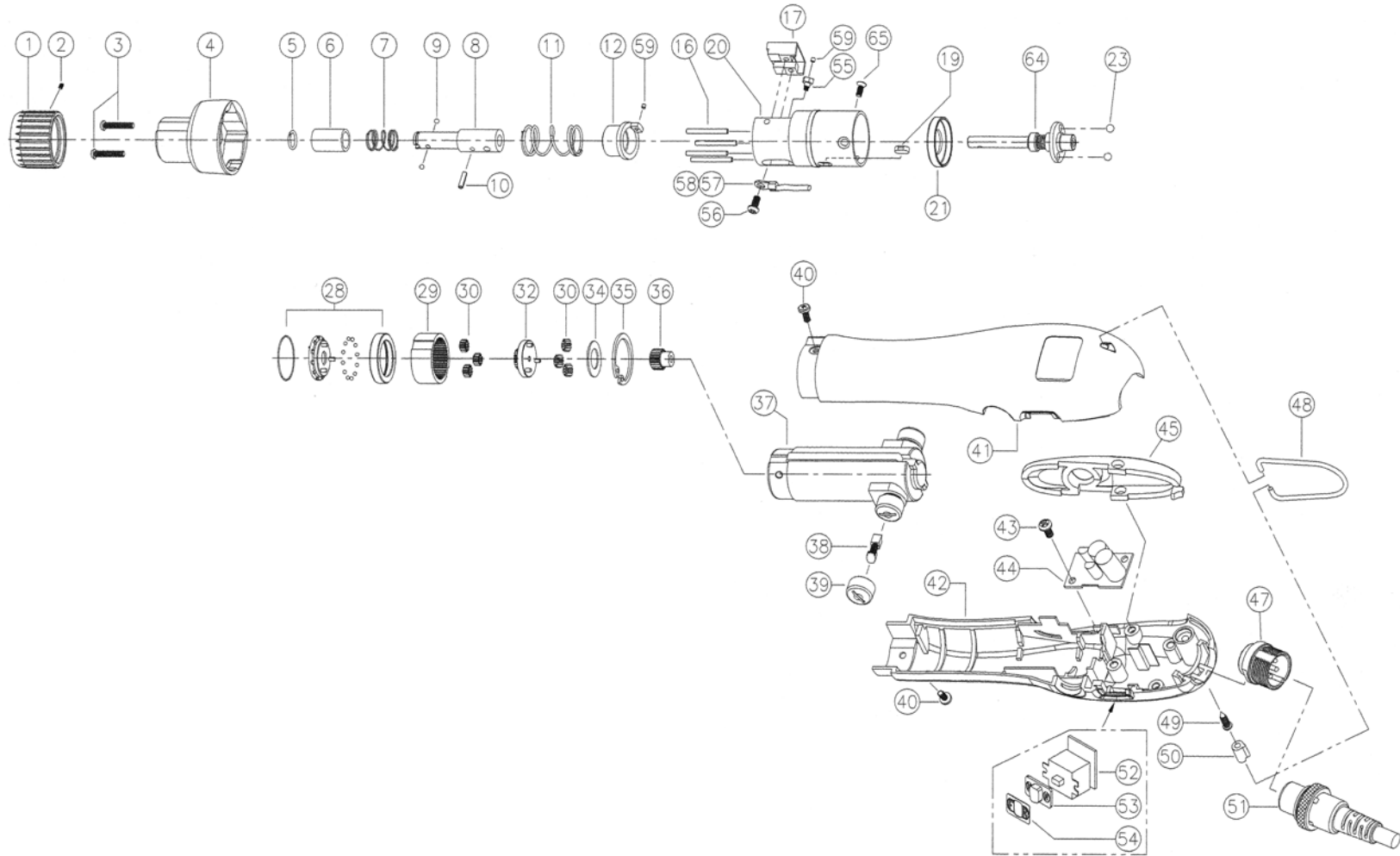


EF150P-A (Push-to-Start)

Version 1.1



EF150P-A (Push-to-Start)

Version 1.1

No.	Part Number	Description	Qty.	No.	Part Number	Description	Qty.
1	14-510011	Torque Adjuster	1	40	14-510451	Screw (M2.6x3L)	2
2	14-510480	Set Screw (for Torque Adjuster)	1	41	14-510411	Housing (Gray)	1
3	14-510460	Screw	2	42	14-510412	Housing (Green)	1
4	14-510001	Top Cover w/Scale	1	43	14-520476	Screw	1
5	14-510025	C-Ring (for 1/4 Hex Drive)	1	44	14-520660	Power PCB Assembly	1
6	14-510075	Bit Collar (for 1/4 Hex Drive)	1	45	14-510243	Attachment	1
7	14-500610	Collar Spring	1	47	14-510310	5-Pin Connector	1
8	14-510095	Bit Socket (for 1/4 Hex Drive)	1	48	14-500680	Hook	1
9	14-500905	Steel Ball (1.5)	2	49	14-502302	Tapping Screw	1
10	14-510440	Roll Pin (2x8L)	1	50	14-510270	Insert	1
11	14-510225	Torque Spring (Bronze)	1	51	14-510550	Cable 5-Pin	1
	14-510220	Torque Spring (Gold)	1	52	14-510410	FOR/REV Switch	1
	14-510231	Torque Spring (Black)	1	53	14-502130	Switch Cover	1
12	14-510081	Slider	1	54	14-502155	Switch Cover Label	1
16	14-510941	Niddle Pin	4	55	14-510730	Magnet Holder	1
17	14-510712	Sensor Assembly EF (Push)	1	56	14-509951	Earth Screw	1
19	14-510970	Key	1	57	14-509960	Eartch Ring	1
20	14-510906	Gear Case Assembly EF (Push)	1	58	14-510701	Earth Wire	1
21	14-510920	Slide Ring	1	59	14-500140	Magnet	1
23	14-500920	Steel Ball	2	64	14-510915	Shaft Assembly	1
28	14-510956	Clutch Assembly (for EF150)	1	65	14-510456	Screw	3
29	14-510960	Ring Gear	1				
30	14-510180	Idle Gear (Steel)	6				
32	14-510190	Gear Holder (for EF150)	1				
34	14-510032	Washer	1				
35	14-500160	Snap Ring	1				
36	14-510210	Sun Pinion Gear (for EF150)	1				
37	14-510562	Motor Assembly	1				
38	14-510650	Carbon Brush	2				
39	14-510660	Brush Cap	2				



mountz
the torque tool specialists.

408-292-2214
Fax: 408-292-2733

sales@etorque.com

www.etorque.com



ISO 9001