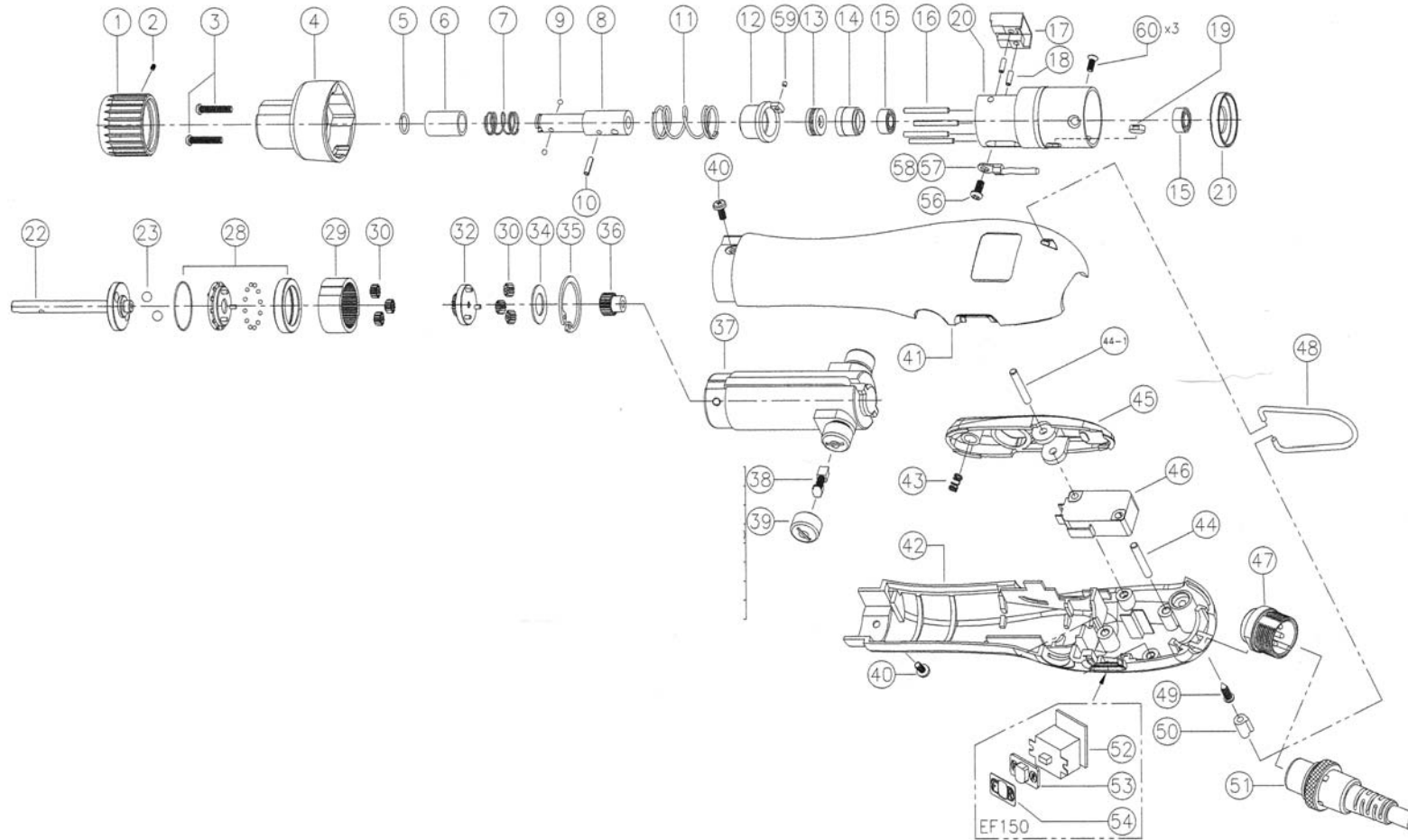


EF180-A ESD (Lever Start)

Version 1.1



EF180-A ESD (Lever Start)

Version 1.1

No.	Part Number	Description	Qty.	No.	Part Number	Description	Qty.
1	14-510011	Torque Adjuster	1	40	14-510451	Screw (M2.6x3L)	2
2	14-510480	Set Screw (for Torque Adjuster)	1	41	14-510423	Housing (Top Label Side)	1
3	14-510460	Screw	2	42	14-510422	Housing	1
4	14-510001	Top Cover w/Scale	1	43	14-510250	Lever Spring	1
5	14-510025	C-Ring (for 1/4 Hex Drive)	1	44	14-510280	Lever & S/W Pin	1
6	14-510075	Bit Collar (for 1/4 Hex Drive)	1	44-1	14-510281	Lever Pin	1
7	14-500610	Collar Spring	1	45	14-510240	Lever	1
8	14-510095	Bit Socket (for 1/4 Hex Drive)	1	47	14-510310	5-Pin Connector	1
9	14-500905	Steel Ball (1.5)	2	48	14-500680	Hook	1
10	14-510440	Roll Pin (2x8L)	1	49	14-502302	Tapping Screw	1
11	14-510225	Torque Spring (Bronze)	1	50	14-510270	Insert	1
	14-510230	Torque Spring (Gold)	1	51	14-510550	Cable 5-Pin	1
	14-510232	Torque Spring (Black)	1	52	14-510540	FOR/REV Switch	1
12	14-510081	Slider	1	53	14-502130	Switch Cover	1
13	14-510490	Thrust Bearing (F5-11)	1	54	14-502155	Switch Cover Label	1
14	14-510087	Sleeve	1	56	14-509951	Earth Screw	1
15	14-510500	Ball Bearing (MR105)	2	57	14-509960	Eartch Ring	1
16	14-510941	Niddle Pin	4	58	14-510701	Earth Wire	1
17	14-510720	Sensor Assembly EF	1	59	14-500140	Magnet	1
18	14-510430	Roll Pin (2x6L)	2	60	14-510456	Screw	3
19	14-510970	Key	1				
20	14-510902	Gear Case	1				
21	14-510920	Slide Ring	1				
22	14-510911	Shaft	1				
23	14-500920	Steel Ball	2				
28	14-510957	Clutch Assembly (for EF180)	1				
29	14-510960	Ring Gear	1				
30	14-510185	Idle Gear (Steel)	6				
32	14-510195	Gear Holder (for EF180)	1				
34	14-510032	Washer	1				
35	14-500160	Snap Ring	1				
36	14-510215	Sun Pinion Gear (for EF180)	1				
37	14-510562	Motor Assembly	1				
38	14-510650	Carbon Brush	2				
39	14-510660	Brush Cap	2				



mountz
the torque tool specialists.

408-292-2214
Fax: 408-292-2733

sales@etorque.com

www.etorque.com



ISO 9001