

# In-Line

Pneumatic Screwdrivers

**flexPower**  
by mountz

## KEY FEATURES

Various models that range from 2.6 - 95.5 lbf.in

High performance oil free motor delivers environmentally friendly, durable, power and speed. One third more power than competitive models.

Safe operation with reduced noise, vibration and low torque reaction.

High accuracy patented clutch with precision automatic shut-off.

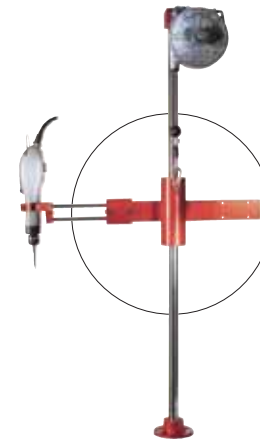
Soft texture ergonomic grip for operator comfort.

One touch torque adjustment, eliminates difficult set up of drivers. Torque nut cover prevents operator tampering.

Four different colored tool bands allow color coding of specific torque values (Red, Green, Blue, Yellow are included)

Built with new aluminum alloy to provide durability and reduced maintenance - no cracking, fading or chipping found in composite body tools.

Wide ranges and RPM selections all for easy tool specification based on application requirements.



## EZ-GLIDER

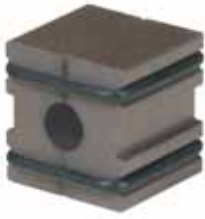
The torque arm keeps the tool perpendicular and prevents cross threading and side load. Maneuvers smoothly as arm absorbs torque reaction.



## COLOR CODE RINGS

Four different colored tool bands allow color coding of specific torque values (Red, Green, Blue, Yellow are included)

Model	Driver Type	Item #	Torque Ranges		RPM	Grip Dia.	Length	Drive Size	Weight lbs.	Noise dBa	Air Usage cfm	Min. Air Hose Bore	Fastening Capacity	
			lbf.in	N.m									Machine Screw Dia	Tapping Screw Dia
XP35	Lever Start	360000	2.6 - 17.4	0.3 - 2	2200	1 1/4"	8"	1/4" F/Hex	1.3	72	8.5	5.0 mm	M2.2 - M4.5	M1.7 - M3.5
XP35PS	Push-to-Start	360005	2.6 - 17.4	0.3 - 2	2200	1 1/4"	7"	1/4" F/Hex	1.2	72	8.5	5.0 mm	M2.2 - M4.5	M1.7 - M3.5
XP40	Lever Start	360001	4.3 - 30.4	0.5 - 3.4	1000	1 1/4"	8"	1/4" F/Hex	1.3	72	8.5	5.0 mm	M2.8 - M5.2	M2.2 - M4.2
XP40PS	Push-to-Start	360006	4.3 - 30.4	0.5 - 3.4	1000	1 1/4"	7"	1/4" F/Hex	1.2	72	8.5	5.0 mm	M2.8 - M5.2	M2.2 - M4.2
XP45	Lever Start	360002	6.9 - 34.7	0.8 - 3.9	800	1 1/4"	8"	1/4" F/Hex	1.3	74	8.5	5.0 mm	M3.3 - M5.8	M2.7 - M4.7
XP45PS	Push-to-Start	360007	6.9 - 34.7	0.8 - 3.9	800	1 1/4"	7"	1/4" F/Hex	1.2	74	8.5	5.0 mm	M3.3 - M5.8	M2.7 - M4.7
XP48	Lever Start	360003	4.3 - 39.1	0.5 - 4.4	1700	1 1/2"	9 1/2"	1/4" F/Hex	1.9	76	15.9	8.0 mm	M3.6 - M6.3	M2.8 - M5.3
XP48PS	Push-to-Start	360008	4.3 - 39.1	0.5 - 4.4	1700	1 1/2"	8 1/2"	1/4" F/Hex	1.8	76	15.9	8.0 mm	M3.6 - M6.3	M2.8 - M5.3
XP60	Lever Start	360004	26 - 95.5	2.9 - 10.8	550	1 1/2"	9 1/2"	1/4" F/Hex	1.9	76	15.9	8.0 mm	M5.0 - M7.6	M4.0 - M6.3
XP60PS	Push-to-Start	360009	26 - 95.5	2.9 - 10.8	550	1 1/2"	8 1/2"	1/4" F/Hex	1.8	76	15.9	8.0 mm	M5.0 - M7.6	M4.0 - M6.3



### MAGNETIZER / DEMAGNETIZER

Magnetize or demagnetize bits and parts instantly.

Item #120815

# Accessories

Electric Torque Screwdrivers



### COIL AIR HOSE

Dual swivel hose fittings provide 360° rotation. Durable polyurethane hose - 8mm ID. Flexible, lightweight and good recoil memory. 1/4 NPT fitting. Burst pressure 426 PSI at 73° F

Length	Item #
6m	360030
10m	360031

### TOOL STAND

A rugged adjustable tool support stand. Prevent tool damage due to dropping or mishandling. Convenient tool positioning - adjust both vertically and horizontally. Electric tool cords can be tie-wrapped to the vertical base to keep work station clean. 360 degree swivel. Four foot high, maximum arm length 1.75 feet. A balancer is recommended.

Model: MT-10  
Item #060050



### Pneumatic Center Block

Fitted with a pre-tapped plumbing holes. For attaching air fittings or air hose on MT-10 Tool Stand.

Item #061385

### BENCH CLAMP

Used to clamp MT-10 Tool Stand base to table tops. This handy unit eliminates hole drilling and secures the tool stand in place. It's flexible and ready to move at a moments notice.

Model: 311  
Item #180035

### COUPLER

for Air Tool (Universal 1/4 female)



Item #360033

### FITTINGS

for Air Tool 1/4" Female (Milton type)  
Item #360034

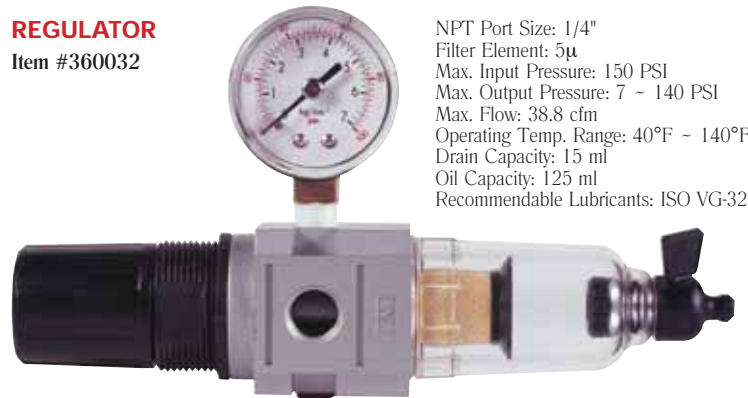


for Air Tool 1/4" Male (Milton type)  
Item #360035

### REGULATOR

Item #360032

NPT Port Size: 1/4"  
Filter Element: 5µ  
Max. Input Pressure: 150 PSI  
Max. Output Pressure: 7 - 140 PSI  
Max. Flow: 38.8 cfm  
Operating Temp. Range: 40°F - 140°F  
Drain Capacity: 15 ml  
Oil Capacity: 125 ml  
Recommendable Lubricants: ISO VG-32



### MAG-O-NETS

Magnetize bits by sliding a Mag-O-Net onto the bit.

(actual size)



Desc.	Item #	Inner Dia.	Outer Dia.	Package Quantity	Use
for 3/16" Shank Bit	145710	3/16"	17.5mm	10	For most 0 & 00 bits
for 5mm Shank Bit	145711	6mm	17.5mm	10	Reduced Dia. Bits
for 1/4" Shank Bit	145712	7mm	19mm	10	Standard Bits

etorque.com

ISO 9001 and ISO 17025 Company

Accessories

1.12