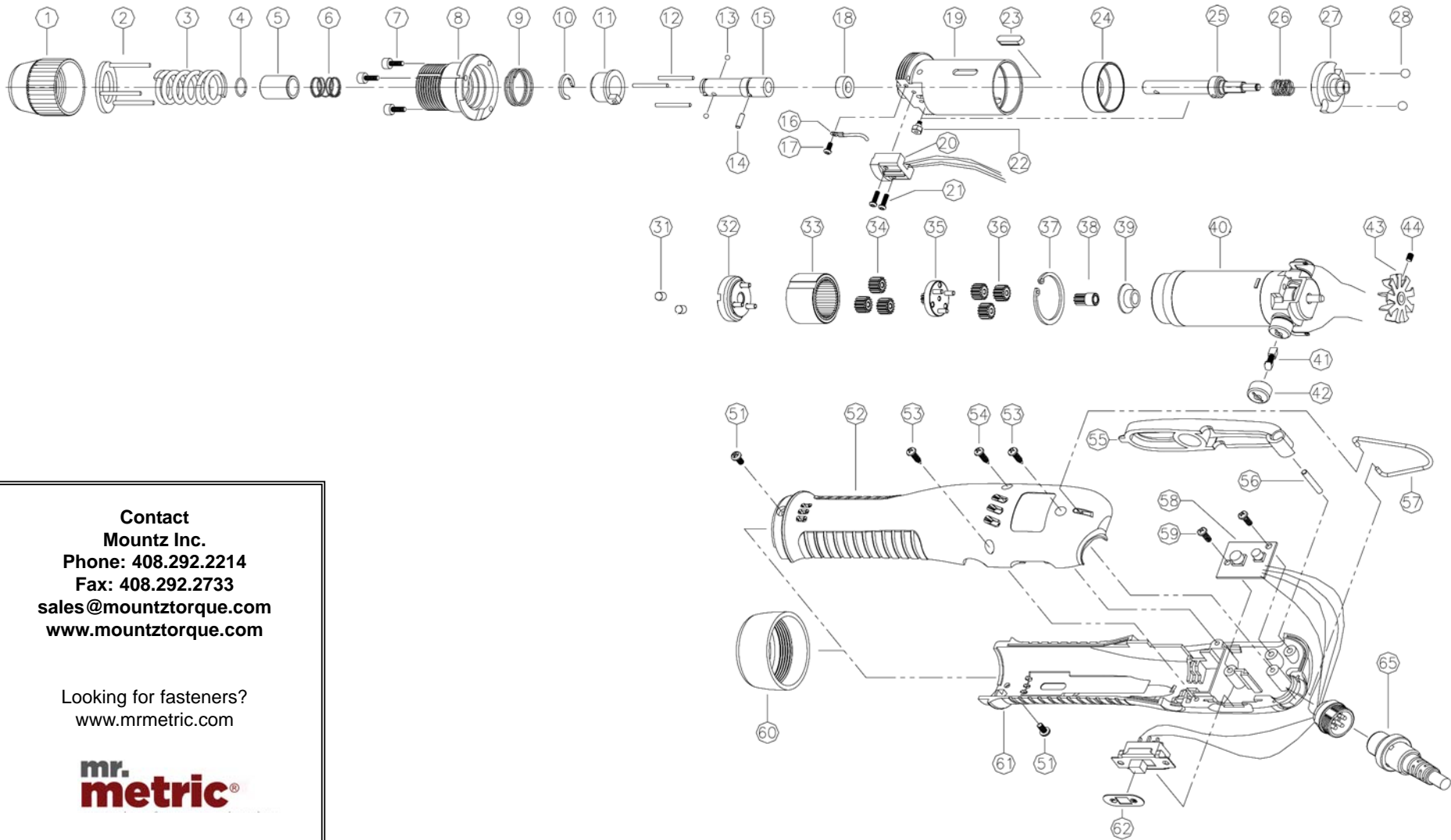


K250P-A ESD, K350P-A ESD & K450P-A ESD Models (1/4 F/Hex)

Rev 4 May 17 2011



Contact
Mountz Inc.
 Phone: 408.292.2214
 Fax: 408.292.2733
sales@mountztorque.com
www.mountztorque.com

Looking for fasteners?
www.mrmetric.com

mr.
metric®



K250P-A ESD, K350P-A ESD & K450P-A ESD Models (1/4 F/Hex)

Rev 4 May 17 2011

No.	Part Number	Description	Qty.	Ref	No.	Part Number	Description	Qty.	Ref
1	14-PKK1801	ADJUSTER	1		39	14-PKK1820	WASHER	1	
2	14-508130	TORQUE SPRING HOLDER ASS 'Y	1		40	14-520600	MOTOR ASSY	1	
3	14-520230	TORQUE SPRING (SILVER)	1	K250P-A & K350P-A	41	14-510650	CARBON BRUSH PACK (2PCS)	1	
	14-520235	TORQUE SPRING BRONZE)	1	K250P-A, K350P-A & K450P-A	42	14-510660	BRUSH CAP	1	
	14-520220	TORQUE SPRING (GOLD)	1	K350P-A & K450P-A	43	14-520150	FAN	1	
	14-520210	TORQUE SPRING (BLACK)	1	K450P-A	44	14-510480	SET SCREW	1	
4	14-PAL1973	BIT SOCKET RING	1		51	14-520480	SCREW	1	
5	14-520011	BIT COLLAR	1		52	14-520172	UPPER HOUSING (FOR ESD MODELS)	1	
6	14-PSK1964	COLLAR SPRING	1		53	14-502302	SCREW (TORX 3x12 L)	2	
7	14-PSW2204	WRENCH BOLT (M,HEX,M2.5x8L)	3		54	14-PSW2703	SCREW (T,TORX, 3x20L)	1	
8	14-PKK1131	TOP COVER ASS'Y	1		55	14-PKK1819A	ATTACHMENT (FOR ESD MODELS)	1	
9	14-PKK1821	LIMIT SPRING	1		56	14-510280	LEVER PIN	1	
10	14-PSK1954	C-RING (5103-37)	1		57	14-PEK1803	HOOK	1	
11	14-PKK1123	SLEEVE ASS'Y	1		58	14-3000113	CONTROL SET (for K-Series Push-To-Start)	1	
12	14-PSK1327	NEEDLE PIN	3		59	14-520476	SCREW	2	
13	14-PAL1928	STEEL BALL (for 1/4 F/Hex Dr)	2		60	14-520161	HOUSING NUT	1	
14	14-PAL1231	GEAR HOLDER PIN	1		61	14-520182	LOWER HOUSING (FOR ESD MODELS)	1	
15	14-PSK1401	BIT SOCKET A (for 1/4 F/Hex Dr)	1		62	14-QKK0420	SWITCH COVER LABEL	1	
16	14-QKK0324	EARTH WIRE (K)	1		65	14-PELZ932	CABLE 6PIN (3M,STANDARD)	1	
17	14-PSW2205	SCREW (M,PHILLIPS,M2.3x5L)	1						
18	14-PSK1347	SPACER	1						
19	14-PKK1108	GEAR CASE ASS'Y (PUSH-to-START)	1						
20	14-3000039	SENSOR ASSEMBLY 3K(P)	1						
21	14-PSW2211	SCREW	2						
22	14-PSK1113	MAGNET HOLDER ASSEMBLY	1						
23	14-PKK1911	KEY	1						
24	14-PKK1319	SLIDE RING	1						
25	14-520125	SHAFT ASSEMBLY (PUSH-to-START)	1						
26	14-PSK1963	SPRING 27(PUSH-to-START)	1						
27	14-PKK1305	SHAFT (BALL HOLDING TYPE)	1						
28	14-PAL1935	STELL BALL (5.56)	2						
31	14-510300	ROLLER (4.5x4.3L)	2						
32	14-PKK1105	CLUTCH ASS'Y	1	K250-A					
	14-PKK1106	CLUTCH ASS'Y	1	K350-A & K450-A					
33	14-520320	RING GEAR	1						
34	14-520350	IDLE GEAR (13T)	3	K250-A					
	14-520330	IDLE GEAR (16T)	3	K350-A & K450-A					
35	14-PKK1103	1ST GEAR HOLDER ASSY B	1	K250-A					
	14-PKK1102	1ST GEAR HOLDER ASS'Y	1	K350-A					
	14-PKK1112	1ST GEAR HOLDER ASS'Y C	1	K450-A					
36	14-520350	IDLE GEAR (13T)	3	K250-A					
	14-520330	IDLE GEAR (16T)	3	K350-A & K450-A					
37	14-PKK1902	SNAP RING (R28)	1						
38	14-520390	PINION GEAR	1	K250-A & K350-A					
	14-PKK1236	PINION GEAR B	1	K450-A					