

MT-10 Tool Support Operation Instructions

Rev 2.0 (June 20, 2011)

MT-10 Tool Support

The MT-10 is a rugged, adjustable Tool Support system, which prevents tool damage due to dropping or mishandling. Simply adjust the height and boom allowing convenient positioning based on your work area, operator height, and application requirements. Electric tool cords can be tie-wrapped to the vertical base to improve cosmetic appearance of workstation and eliminate unnecessary excess of power cord extensions. The Tool Support Stand does not include a balancer.

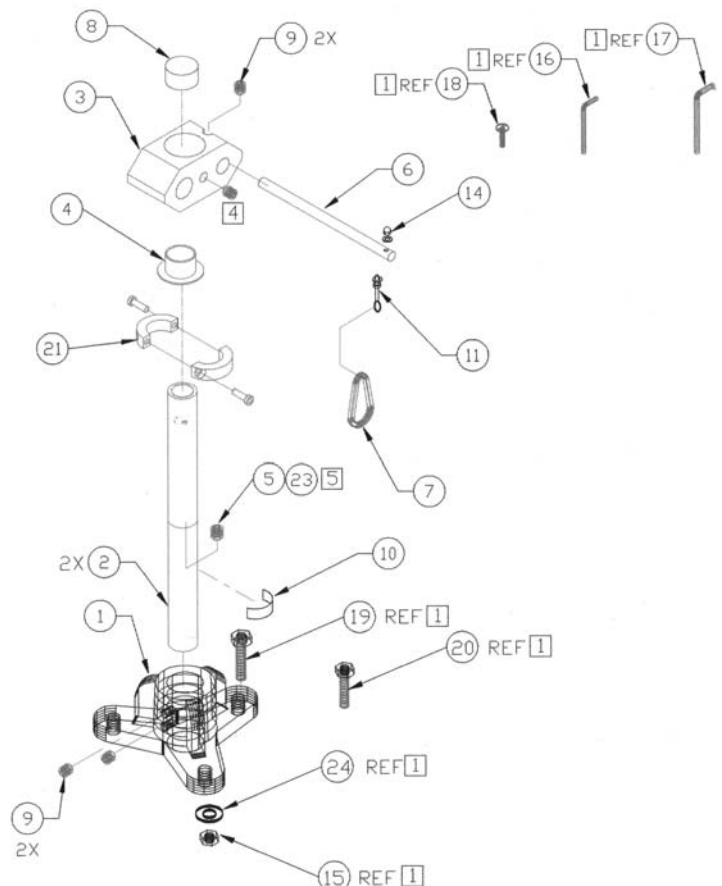
MT-10 Tool Support Assembly

1. Mount the **Base (#1)** securely to a bench top.
2. Slide the **Vertical Post (#2)** into the **Base (#1)**. Tighten the **SKT Screw (#9)** into the side of the **Base**.
3. Take the **Cross Rod (#6)** and place the **Eyebolt (#11)** through the hole and tighten **Acorn Bolt (#14)** onto the **Eyebolt**. Cinch the **Eyebolt** tight to the **Cross Rod** with 2 **Hex Nuts**.
4. Place the **Cross Rod (#6)** through hole of the **Center Block (#3)**. Once the distance of the **Cross Rod** is set, tighten the **SKT Screw (#9)** through the top hole of the **Cross Rod**. Attach **clamp (#21)** to locate center block for rotating option.
5. Slide the **Center Block (#3)** down the **Vertical Post (#2)** to desired height position. Using the **Washer (#4)** and the **SKT Screw (#5)**, place into the hole of the **Center Block (#3)** and tighten.
6. Place the **Plastic End Cap (#8)** onto the top part of **Vertical Post (#2)**.
7. Connect the **Spring Snap (#7)** to the **Eyebolt (#11)**.
8. Connect a tool balancer to the **Spring Snap (#7)**.

Accessory

For a Pneumatic Center Block fitted with a pre-tapped plumbing holes for attaching air fittings or air hose: **Order # 061385**

1	600281	1	Base for MT-10
2	600282	1	Vertical Post
3	600283	1	Center Block
4	601004	1	BRG, Flanger Nylon 1 1/8 ID
6	600286	1	Cross Rod
7	600287	1	Snap, Spring
8	600288	1	Plastic End Cap
9	600143	3	SKT HD Screw (5/16-18 x 1/4)
10	509001	1	Label, Mountz
11	220410	1	Eyebolt (10-24 x 2.0)
14	220412	1	Nut, Acorn 10-24
15	220004	REF	Nut, Jam, Hex 5/16-18
16	602387	REF	Key, Hex, Long Arm 3/16
17	602388	REF	Key, Hex, Short Arm 5/32
18	220355-002	REF	Screw, FH (1/4-20 x 3/4)
19	605295	REF	Bolt, Hex 5/16-18 x 3)
20	600289	REF	Screw, Lag (3/8 x 1 1/2)
21	220020	1	Clamp
22	500296	1	Operation Instructions
23	220371-242	REF	Loctite # 242
24	600290	REF	Washer, Flat 3/8



Items in Gray are not included with Tool Support. Items are listed for reference.