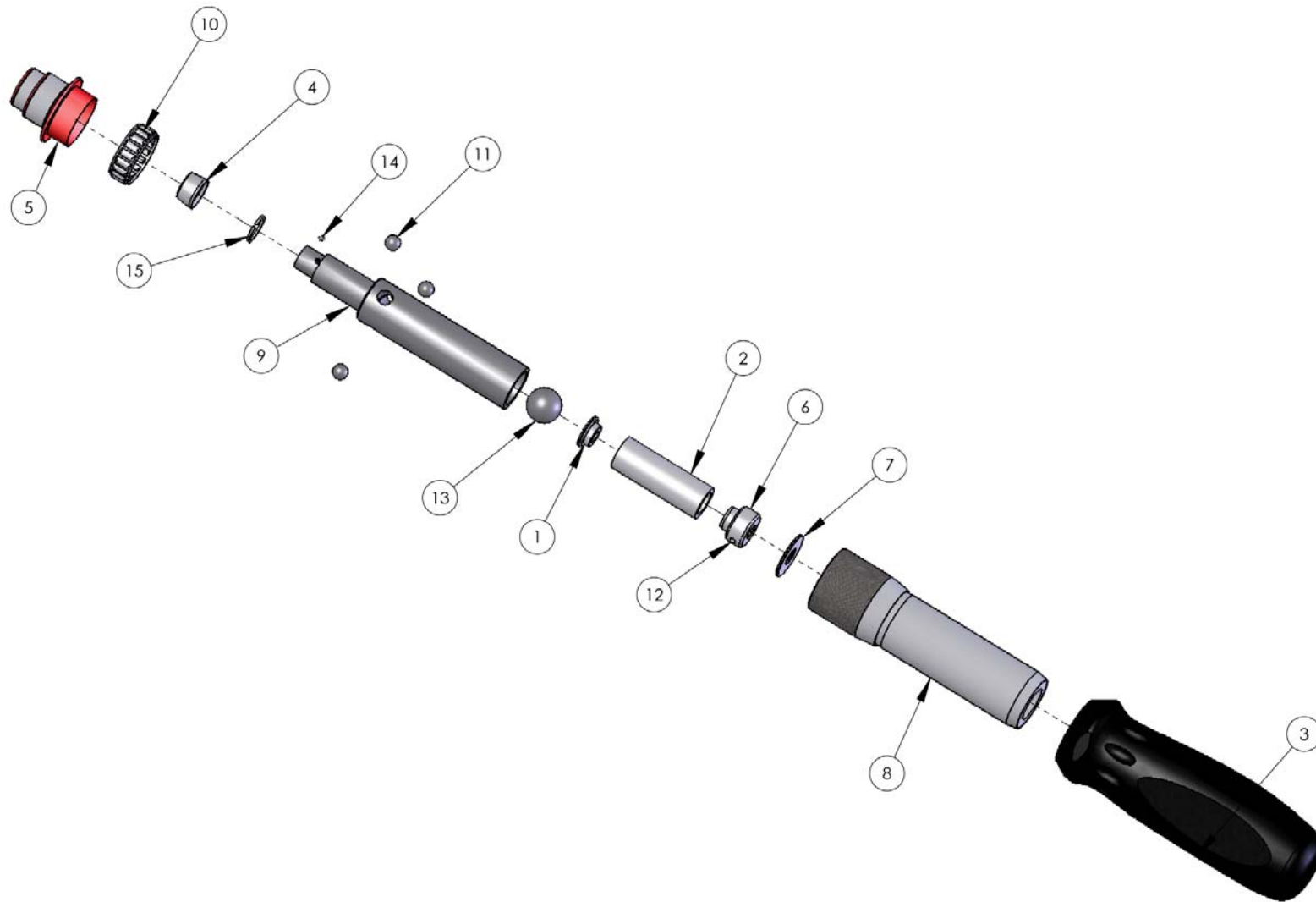


PSE150 Parts List

January 25, 2012





PSE150 Parts List

January 25, 2012

No.	Part Number	Description	Qty.
1.	20-A15700	SPRING THRUST PAD	1
2.	20-A21060	COMPRESSION SPRING	1
3.	20-A23881	HAND GRIP - PSE150	1
4.	20-A24030	COVER	1
5.	20-A24175	FRONT COVER - GLOSS RED	1
6.	20-A24182	ADJUSTING SCREW	1
7.	20-A24190	THRUST WASHER	1
8.	20-A24201	HANDLE TUBE SUB ASSEMBLY	1
9.	20-B24160	SPRING HOUSING	1
10.	20-P10370	TOLERANCE RING	1
11.	20-P10580	STEEL BALL - 7/32in DIA	3
12.	20-P10590	NYLON BALL - 3-32in DIA	1
13.	20-P10630	STEEL BALL - 1/2in DIA	1
14.	20-P11730	STEEL BALL - 2.0mm DIAL	1
15.	20-P26340	WIRE RING	1

Mountz Service Locations

Eastern Service Center

19051 Underwood Rd.
Foley, AL 36535
Phone: (251) 943-4125
Fax: (251) 943-4979

Western Service Center

1080 N.11th Street
San Jose, CA 95112
Phone: (408) 292-2214
Fax: (408) 292-2733

Mexico Service Center

Mountz Mexico SA de CV Chihuahua
Av. Cristobal Colon #15343
Col. Paseos de Chihuahua
Chihuahua, Chih. Mexico CP 31125
Phone: (614) 481-0023
Fax: (614) 481-0053

www.mountztorque.com
sales@mountztorque.com

Download a "Service Form" and include a copy
when you send the tools in to be serviced.

Looking for fasteners?
www.mrmetric.com

