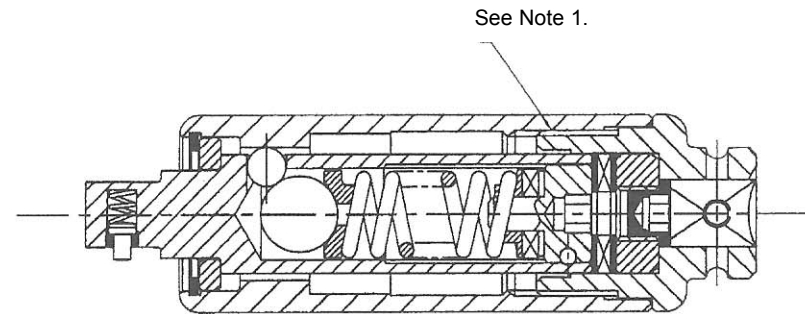
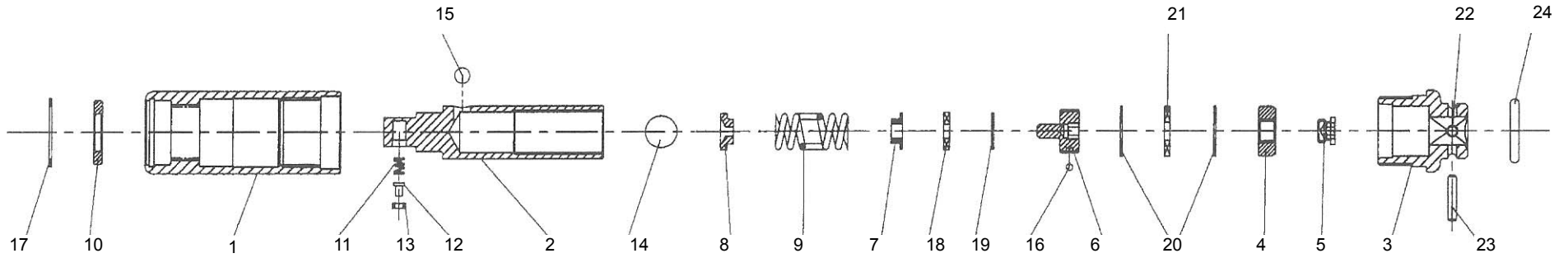


RTU170, RTU450 & RTU1000 Parts List

Version 1.1



RTU170, RTU450 & RTU1000 Parts List

Version 1.1

No.	Part Number	Description	Qty.
1	20-C79951	Body for RTU170	1
	20-C79952	Body for RTU450	1
	20-C79953	Body for RTU1000	1
2	20-B79960	Spring Housing	1
3	20-B79970	Drive Cap	1
4	20-A79980	Threaded Spacer	1
5	20-A79990	Protection Screw	1
6	20-A80000	Adjusting Screw	1
7	20-A80011	Adapter Sleeve for RTU170	1
	20-A80012	Adapter Sleeve for RTU450	1
	20-A80013	Adapter Sleeve for RTU1000	1
8	20-A80021	Spring Pad for RTU170	1
	20-A80022	Spring Pad for RTU450	1
	20-A80023	Spring Pad for RTU1000	1
9	20-P16230	Main Spring for RTU170	1
	20-A59400	Main Spring for RTU450	1
	20-A80950	Main Spring for RTU1000	1
10	20-A80030	Spacer Ring	1
11	20-A10032	Compression Spring	1
12	20-A79860	Pin	1
13	20-A79870	Retaining Ring	1
14	20-P10550	Steel Ball 7/16" Dia	1
15	20-P10580	Steel Ball 7/32" Dia	3
16	20-P10590	Nylon Ball 3/32" Dia	1

No.	Part Number	Description	Qty.
17	20-P10020	Circlip	1
18	20-P11110	Needle Thrust Bearing	1
19	20-P11090	Thrust Plate	1
20	20-P13350	Thrust Plate	2
21	20-P11660	Needle Thrust Bearing	1
22	20-P16200	SKT Set Screw Knurled Cup (M4x4)	1
23	20-P16210	Dowel Pin (Dia 3.0 x 16 Long)	1
24	20-P16220	"O" Ring	1

Note:

1. Assembly items 1 & 3 using Loctite 648 and apply a torque of 15 N.m - remove surplus Loctite.
2. Lubricate cam, balls, springs and bearings with Rocol A.S.P.
3. On no account must the following torque figures be exceeded during assembly or test otherwise permanent damage will occur to cam & ball assembly.
 - RTU170 - 200cN.m
 - RTU450 - 5 N.m
 - RTU1000 - 11 N.m