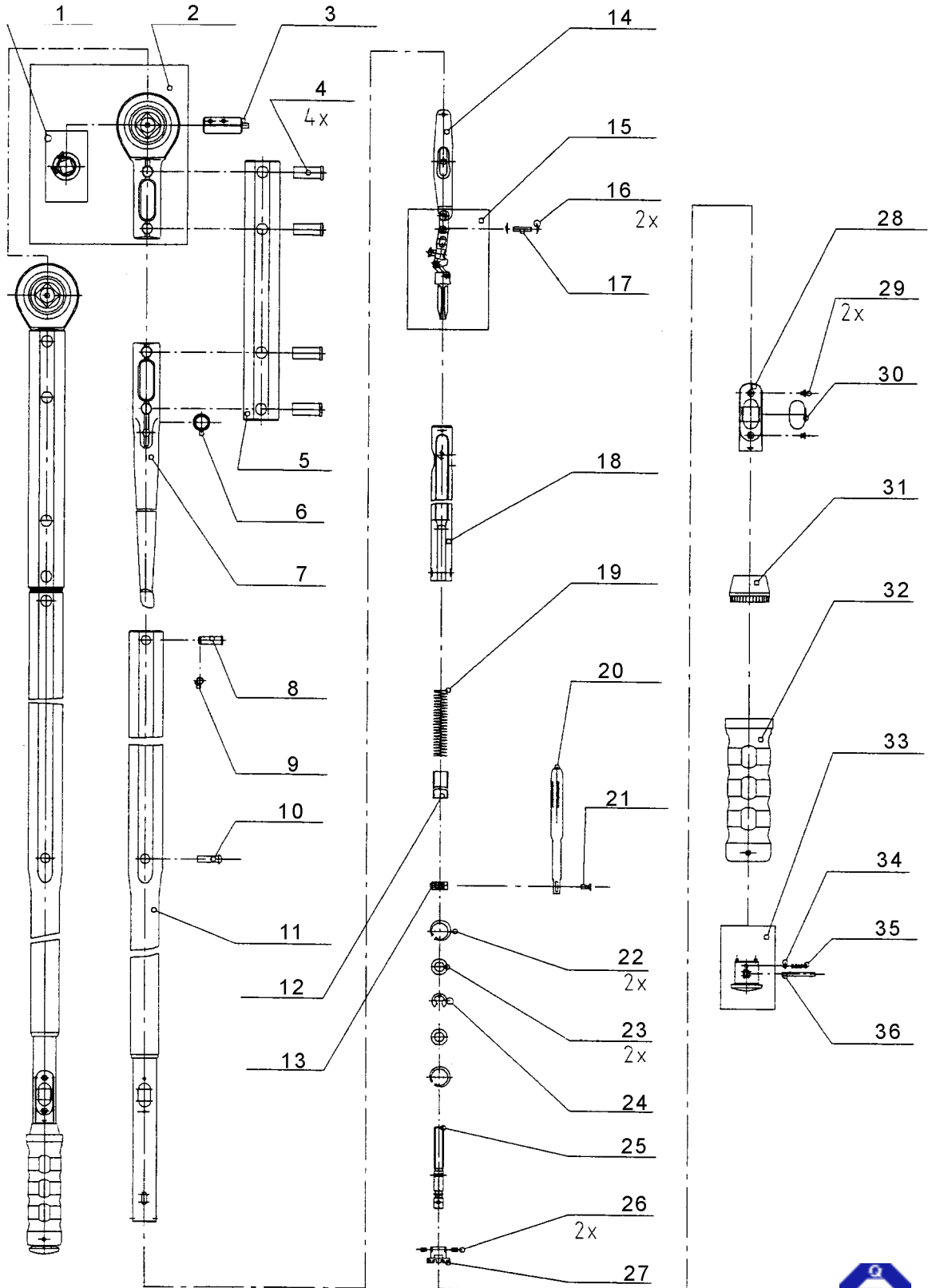


# Titan 600F Click Wrench (Adjustable)





## Titan 600F Click Wrench (Adjustable)

Ref#	Part#	Qty	Description
1	28-1190040	1	3293 Z Pseudo assembly kit
2	28-1522132	1	4550-75 Primary Lever chrome plated
3	28-6279090	1	Push Through Square Drive 3/4"
4	28-1521519	4	Rivet Bolt
5	28-1544675	1	3550-75 Body Tube
6	28-1200917	1	Seal Ring DIN 3770 18 x 3.55
7	28-1521470	1	4550-75 Intermediary Lever
8	28-1200828	1	4550-55 Bolt
9	28-1200976	1	safety ring
10	28-1200852	1	Rivet Bolt
11	28-1544748	1	280015 Body Tube
12	28-1184024	1	Blind Plug 16x1.5x68
13	28-1196073	1	nut M10x1 complete
14	28-1196456	1	Intermediary Lever 4550-55
15	28-1196448	1	Final lever 4550-20/12
16	28-1200844	2	Form Disc 4550-55
17	28-1183192	1	Cylindric pin 4m6x21.5
18	28-1200658	1	4550-55 spring housing
19	28-1184334	1	compression spring 4550
20	28-1544802	1	280015 Scale Sheet
21	28-1200291	1	Scale screw
22	28-1181645	2	safety ring 18 x 1
23	28-1199757	2	retaining washer S10x17
24	28-1183541	1	safety washer 8
25	28-1225553	1	4550-55 Spindle screw
26	28-1197894	2	set screw EN 24766 M4x6
27	28-1197878	1	4550-55 gear
28	28-1544047	1	Plastic Frame Black
29	28-1197959	2	Flat-head screw M3x4.5
30	28-1198378	1	Plastic window TORCOFIX
31	28-1198009	1	scale ring black
32	28-1197916	1	3550-20/33 handle black
33	28-1446487	1	Lock Knob black RAL9005
34	28-1180266	1	Ball 4mm V
35	28-1182749	1	Compression spring 8x3.8x0.4
36	28-1183087	1	Cylindric pin 4m6x36



ISO 9001