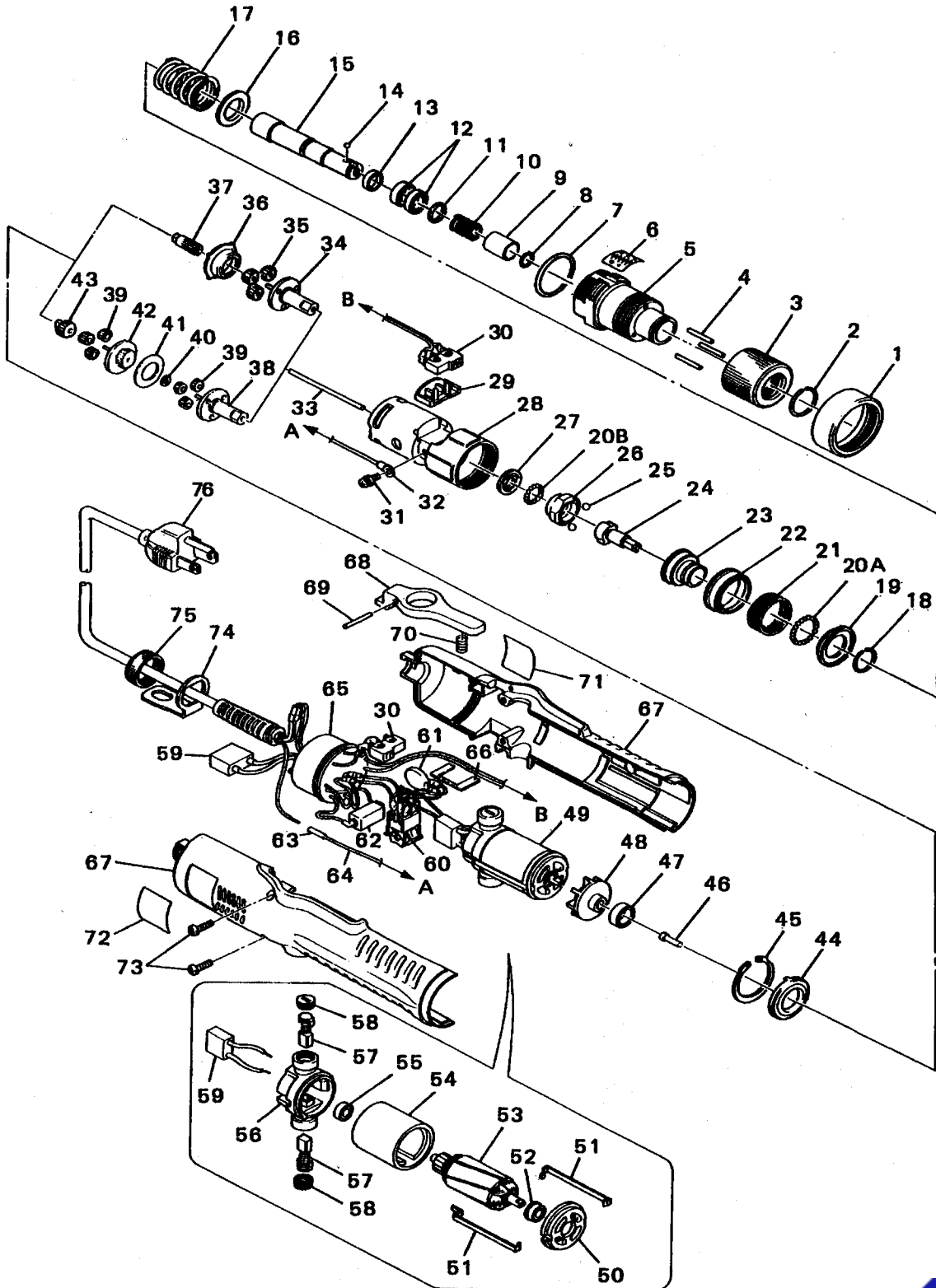


VZ1820 & VZ3012

Rev 1.1





VZ1820 & VZ3012

Ref#	Part Name	Part#	Ref#	Part Name	Part#
1	Front Ring	41-VZ18-0010U	36	Spacer for VZ-1820	41-VZ18-0330
2	Nut Stopper Ring	41-VZ18-0020	37	Pinion Gear 6.33/1 for VZ-1820	41-VZ18-0360
3	Torque Adjusting Nut	41-VZ18-0030	38	Lower Planet Cage for VZ-3012	41-VZ30-0360
4	Knotting Roller (x3)		39	Planet Gear 10.8/1 (x6) for VZ-3012	41-VZ30-0370
	For VZ-1820	41-VZ18-0041	40	Thrust Washer for VZ-3012	41-CL4-0290
	For VZ-3012	41-VZ30-0040	41	Plate B for VZ-3012	41-VZ30-0390
5	Torque Adjusting Bolt	41-VZ18-3050	42	Upper Planet Cage for VZ-3012	41-VZ30-0400
6	Torque Seal	41-VZ18-0060	43	Pinion Gear for VZ-3012	41-VZ30-0410
7	O-Ring 180	41-M3-0260	44	Grease Seal	41-ACL20-0351
8	Collar Stopper 6.35 Hex.	41-VZ18X-0070	45	OV-Ring	41-VZ18-0350
9	Joint Shaft Collar 6.35 Hex.	41-VZ18X-0080	46	Joint Pin	41-VZ18-0700U
10	Collar Spring	41-CL65-0130	47	Bearing for Fan (includes No. 48)	-----
11	Stopper Washer (Spring Stopper)	41-VZ18X-0130	48	Fan	41-VZ18-3380
12	Bearing 15x10x4 (x2) (includes No. 5)	-----	49	Motor Assembly (120V)	41-VZ18-0390U
13	Joint Shaft Stopper	41-VZ18-0140	50	Front Cover	41-VZ18-0420U
14	Steel Ball 2.00 (x2)	22-0054	51	Motor Set Band (x2)	41-VZ18-0410
15	Joint Shaft 6.35 Hex.	41-VZ18X-0120	52	Ball Bearing	41-VZ18-0430
16	Spring Holder	41-VZ18-0150	53	Rotor	41-VZ18-0440U
17	Torque Adjusting Spring		54	Magnet Case	-----
	For VZ-1820 (2.6o, Silver)	41-VZ18-0160	55	Ball Bearing	41-CL65-0410
	For VZ-3012 (3.0o, Black)	41-VZ30-0160	56	End Cover	41-VZ18-0470
	Clutch Panel Set (18-20A, 21-23)	41-VZ18-3220	57	Carbon Brush (x2)	41-VZ18-0480
18	Thrust Washer Set Ring	41-VZ18-0170	58	Carbon Brush Cap (x2)	41-VZ18-0490
19	Thrust Washer	41-VZ18-0180		Circuit Assembly (30(x2), 59(x1), -62,65)	41-VZ18-3550U
20A	Steel Ball 2.50 (x22)	22-0056	59	Condenser (x2)	41-VZ18-0510U
20B	Steel Ball 2.50 (x15)	22-0056		For/Rev Switch Assembly (60, 61)	41-VZ18-3520U
21	Clutch Panel Spring		60	For/Rev Switch	-----
	For VZ-1820	41-VZ18-0200	61	Noise Filter (Surge Absorber)	-----
	For VZ-3012	41-VZ30-0200	62	Resistor	41-VZ18-0540
22	Clutch Panel Cover	41-VZ18-0210	63	Sleeve (includes No. 76)	-----
23	Clutch Panel	41-VZ18-0220	64	Earth Cord (includes No. 76)	-----
24	Cam	41-VZ18-0240	65	P.C.B. Assembly (includes Circuit Assy)	-----
25	Steel Ball 4.5o (x2)	22-0064	66	Switch Plate	41-VZ18-0740U
26	Ball Guide	41-VZ18-0260	67	Body Case A & B	41-VZ18-0560U
27	Thrust	41-VZ18-0270	68	Switch Lever	41-VZ18-0570U
28	Gear Case	41-VZ18-0280	69	Switch Lever Shaft	41-VZ18-0580
29	Switch Protector	41-VZ18-0290	70	Switch Lever Spring	41-VZ18-0590
30	Limit Switch (x2)	41-VZ18-0300U	71	Name Plate (Caution Seal)	41-VZ18-0600U
31	Ground Connector Set Screw 3x6	22-0209	72	Name Plate B (Model No. Seal) for VZ3012	41-VZ30-0390
32	Ground Connector (includes No. 76)	-----	73	Body Case Set Screw 3x12 (x2)	22-0230
33	Center Pin (Push Rod B) 2x67.1	41-VZ18-0690	74	Hanger	41-CL65-0651
34	Lower Planet Cage for VZ-1820	41-VZ18-0310	75	End Ring	41-VZ18-0640U
35	Planet Gear 6.33/1 (x3) for VZ-1820	41-VZ18-0320	76	Cord Assembly (32, 63, 64)	41-VZ18-3650U