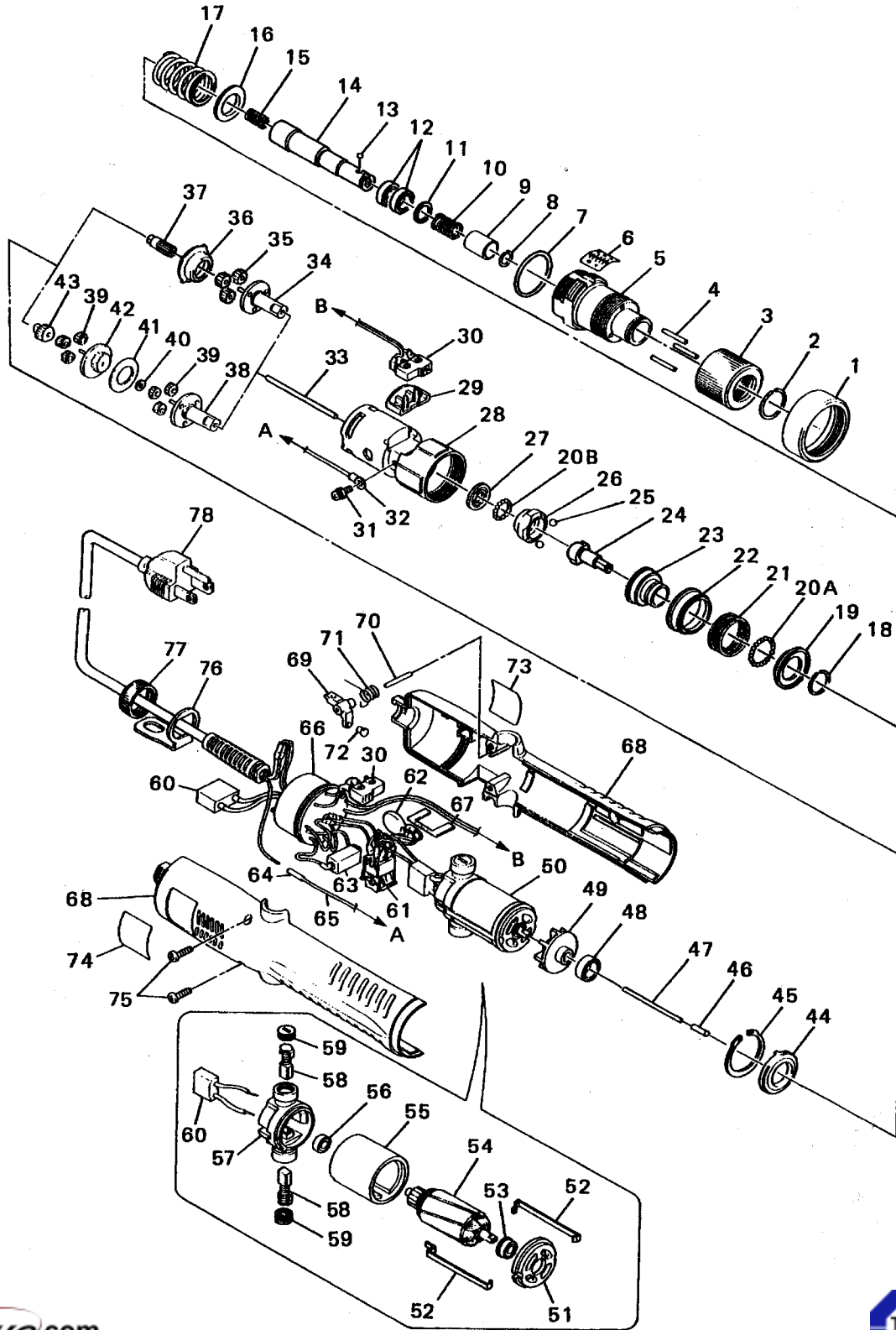


VZ1820PS & VZ3012PS

Rev 1.1





VZ1820PS & VZ3012PS

Ref#	Part Name	Part#	Ref#	Part Name	Part#
1	Front Ring	41-VZ18-0010U	37	Pinion Gear 6.33/1 for VZ-1820PS	41-VZ18-0360
2	Nut Stopper Ring	41-VZ18-0020	38	Lower Planet Cage for VZ-3012PS	41-VZ30-0360
3	Torque Adjusting Nut	41-VZ18-0030	39	Planet Gear 10.8/1 (x6) for VZ-3012PS	41-VZ30-0370
4	Knotting Roller (x3)		40	Thrust Washer for VZ-3012PS	41-CL4-0290
	For VZ-1820PS	41-VZ18-0041	41	Plate B for VZ-3012PS	41-VZ30-0390
	For VZ-3012PS	41-VZ30-0040	42	Upper Planet Cage for VZ-3012PS	41-VZ30-0400
5	Torque Adjusting Bolt	41-VZ18-3050	43	Pinion Gear for VZ-3012PS	41-VZ30-0410
6	Torque Seal	41-VZ18-0060	44	Grease Seal	41-ACL20-0351
7	O-Ring 18o	41-M3-0260	45	OV-Ring	41-VZ18-0350
8	Collar Stopper 6.35 Hex.	41-VZ18X-0070	46	Joint Pin	41-VZ18PS-0070U
9	Joint Shaft Collar 6.35 Hex.	41-VZ18X-0080	47	Push Rod	41-VZ18PS-0770
10	Collar Spring	41-CL65-0130	48	Bearing for Fan (includes No. 49)	-----
11	Stopper Washer	41-VZ18X-0130	49	Fan	41-VZ18-03380
12	Bearing 15x10x4 (x2) (includes No. 5)	-----	50	Motor Assembly (120V)	41-VZ18-0390U
13	Steel Ball 2.0o (x2)	22-0054	51	Front Cover	41-VZ18-0420U
14	Joint Shaft 6.35 Hex.	41-VZ18X-0120	52	Motor Set Band (x2)	41-VZ18-0410
15	Push Spring	41-VZ18PS-0590	53	Ball Bearing	41-VZ18-0430
16	Spring Holder	41-VZ18-0150	54	Rotor	41-VZ18-0440U
17	Torque Adjusting Spring		55	Magnet Case	-----
	For VZ-1820PS (2.60, Silver)	41-VZ18-0160	56	Ball Bearing	41-CL65-0410
	For VZ-3012PS (3.00, Black)	41-VZ30-0160	57	End Cover	41-VZ18-0470
	Clutch Panel Set (18-20A, 21-23)	41-VZ18-3220	58	Carbon Brush (x2)	41-VZ18-0480
18	Thrust Washer Set Ring	41-VZ18-0170	59	Carbon Brush Cap (x2)	41-VZ18-0490
19	Thrust Washer	41-VZ18-0180		Circuit Assembly (30(x2), 59(x1), -63,66)	41-VZ18PS-3550U
20A	Steel Ball 2.50 (x22)	22-0056	60	Condenser (x2)	41-VZ18-0510U
20B	Steel Ball 2.50 (x15)	22-0056		For/Rev Switch Assembly (61, 62)	41-VZ18-3520U
21	Clutch Panel Spring		61	For/Rev Switch	-----
	For VZ-1820PS	41-VZ18-0200	62	Noise Filter (Surge Absorber)	-----
	For VZ-3012PS	41-VZ30-0200	63	Resistor	41-VZ18-0540
22	Clutch Panel Cover	41-VZ18-0210	64	Sleeve (includes No. 78)	-----
23	Clutch Panel	41-VZ18-0220	65	Earth Cord (includes No. 78)	-----
24	Cam	41-VZ18-0240	66	P.C.B. Assembly (includes Circuit Assy)	-----
25	Steel Ball 4.50 (x2)	22-0064	67	Switch Plate	41-VZ18-0740U
26	Ball Guide	41-VZ18-0260	68	Body Case A & B	41-VZ18PS-0560U
27	Thrust	41-VZ18-0270	69	Push Lever	41-VZ18PS-0570
28	Gear Case	41-VZ18-0280	70	Push Lever Shaft	41-VZ18-0580
29	Switch Protector	41-VZ18-0290	71	Push Lever Spring	41-VZ18PS-0670
30	Limit Switch (x2)	41-VZ18-0300U	72	Pivot	41-VZ18PS-0660
31	Ground Connector Set Screw 3x6	22-0209	73	Name Plate A (Caution Seal)	41-VZ18PS-0600U
32	Ground Connector (includes No. 78)	-----	74	Name Plate B (Model No. Seal)	VZ30-0390
33	Center Pin (Push Rod A) 2x71.9	41-VZ18PS-0690	75	Body Case Set Screw 3x12 (x2)	22-0230
34	Lower Planet Cage for VZ-1820PS	41-VZ18-0310	76	Hanger	41-CL65-0651
35	Planet Gear 6.33/1 (x3) for VZ-1820PS	41-VZ18-0320	77	End Ring	41-VZ18-0640U
36	Spacer for VZ-1820Ps	41-VZ18-0330	78	Cord Assembly (32, 64, 65)	41-VZ18-3650U