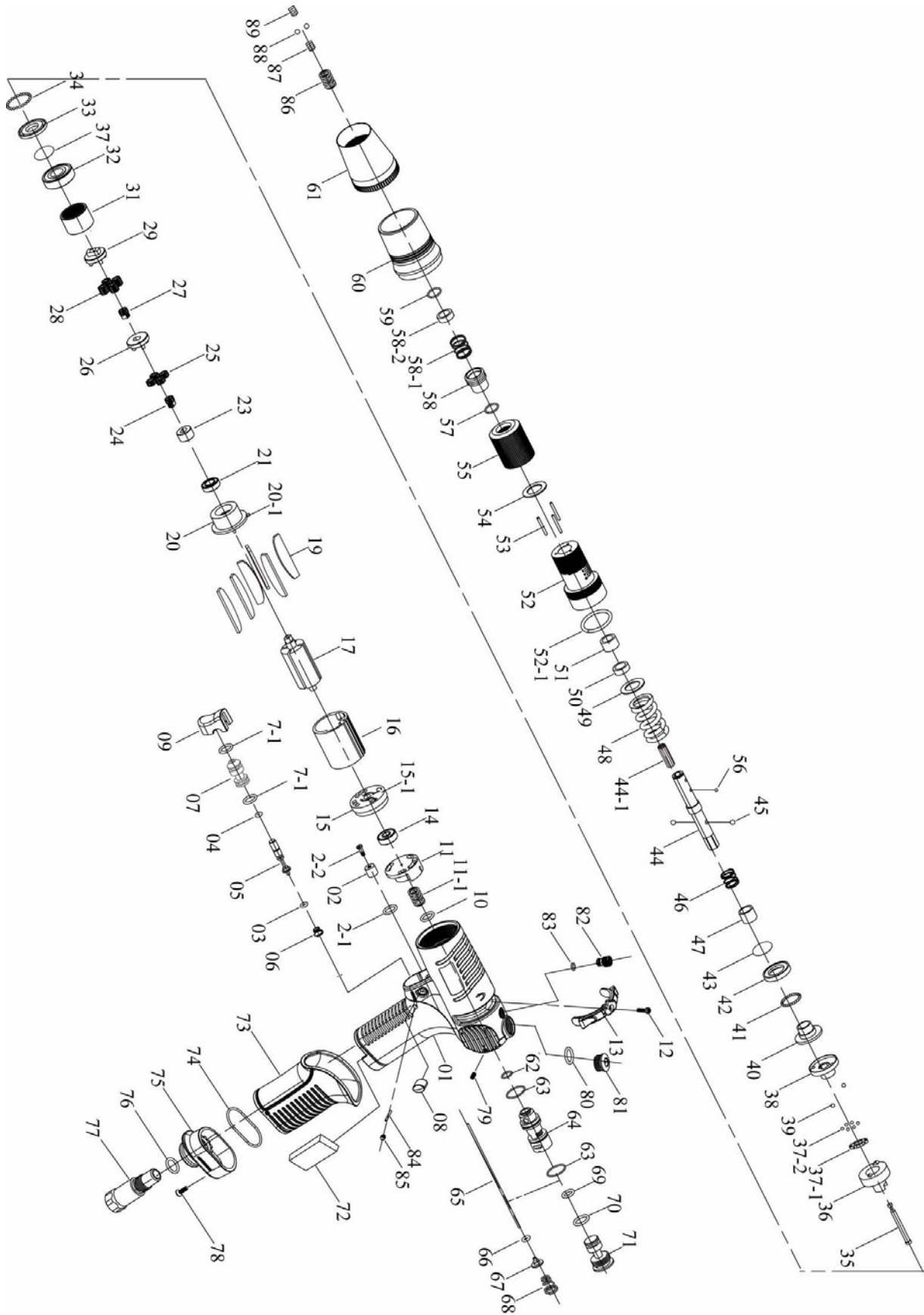


PNEUMATIC SCREWDRIVER MODEL NO.

XP35P



PNEUMATIC SCREWDRIVER MODEL NO.

XP35P

No.	Part No.	Part Name	Q'ty	No.	Part No.	Part Name	Q'ty
1	63-5L2033	Pistol Housing [Black]	1	44-1	63-7Q2002	Regulate Screw	1
2	63-2C2002-A	Blank Cap	1	45	63-7S2105	Ball	2
2-1	63-7Q2008	O Ring	1	46	63-6N2110	Spring	1
2-2	63-7S2106-1	Set Screw	1	47	63-3S2226	Slide Base	1
3	63-7Q2006	O Ring	1	48	63-6N5008	Torque Spring	1
4	63-7Q6112	Valve O-Ring	1	49	63-2S7121	Washer	1
5	63-6S2023	Valve Pin	1	50	63-3S2113	Bushing	1
6	63-6N2116	Cone Spring	1	51	63-2S2240	Anvil Bushing	1
7	63-6S2029	Valve Bushing	1	52	63-5A5224	Clutch Housing	1
7-1	63-7Q2023	O Ring	2	52-1	63-2Q2004	O Ring	1
8	63-5L2111	Cap	2	53	63-6S2010	Needle Pin	3
9	63-5L2701	Button [Black]	1	54	63-3S3101	Regulation Washer	1
10	63-7Q2017	Valve O-Ring	1	55	63-3A3031	Torque Ring	1
11	63-6S2202	Valve	1	56	63-7S3107	Ball	1
11-1	63-6N2108	Spring	1	57	63-3S2113	Bushing	1
12	63-7S2107	Set Screw And Washer	1	58	63-5S2009	Bit Slide Sleeve [Pull]	1
13	63-2L3026	Switch [Black]	1	58-1	63-6N2110	Spring	1
14	63-7S2001	Ball Bearing	1	58-2	63-2S2109	Washer [Pull]	1
15	63-1S3001-A	End Plate	1	59	63-6N2001	C Ring	1
15-1	63-6S2013	Pin	1	60	63-5A3213	Housing Cap	1
16	63-1P3005	Cylinder	1	61	63-5A3510	Torque Cover	1
17	63-1S3045	Rotor	1	62	63-7Q2008	O Ring	1
19	63-1P3058	Blade	6	63	63-7Q6104	O Ring	2
20	63-1P3061	Front Plate	1	64	63-6S2101	Valve Ring	1
20-1	63-6S2014	Pin	1	65	63-6S6006	Operation Rod	1
21	63-7S2002	Ball Bearing	1	66	63-7Q2007	O Ring	1
23	63-1S3050	Connect	1	67	63-6S2020	Valve Plate	1
24	63-1P2271	21T Main Gear	1	68	63-6N2101	Cone Spring	1
25	63-1P2102	10T Plant Gear	7	69	63-7Q6103	O Ring	1
26	63-1P6294	Third Gear Cage	1	70	63-2Q5001	O Ring	1
27	63-1P2271	21T Main Gear	1	71	63-2S2013	Screw Cap	1
28	63-1P2102	10T Plant Gear	7	72	63-2P3040	First Silencer	1
29	63-1P6297	Third Gear Cage	1	73	63-5L3201	Pistol Cover	1
31	63-1S2064	Internal Gear	1	74	63-7Q2015	O Ring	1
32	63-7S5003	Ball Bearing	1	75	63-2A3004	Exhaust Deflector	1
33	63-2S2103	Retainer	1	76	63-2Q5001	O Ring	1
34	63-7S2102	Ball	28	77	63-2S2052	Air Inlet Bushing [NPT]	1
35	63-3S2001	Pilot Pin	1	78	63-7S2115	Screw	1
36	63-3S2211	Rear Clutch	1	79	63-7S2150	Screw	2
37	63-6N2006	C Ring	1	80	63-2Q5001	O Ring	1
37-1	63-3S5232	Retainer	1	81	63-2S2011	Screw Cap	1
37-2	63-7S2102	Ball	6	82	63-7S2122	Screw	1
38	63-3S3201	Center Clutch	1	83	63-7Q2020	O Ring	1
39	63-7S2112	Ball	2	84	63-7S5205	Pin	1
40	63-3S3211	End Clutch	1	85	63-7S2113	Screw	2
41	63-7S2102	Ball	22	86	63-6N6001	Spring	1
42	63-3S2231	Ball Race	1	87	63-7S2111	Screw	1
43	63-6N3100	C Ring	1	88	63-7S2102	Ball	2
44	63-3S7036	Anvil [PULL]	1	89	63-7S2111	Screw	1