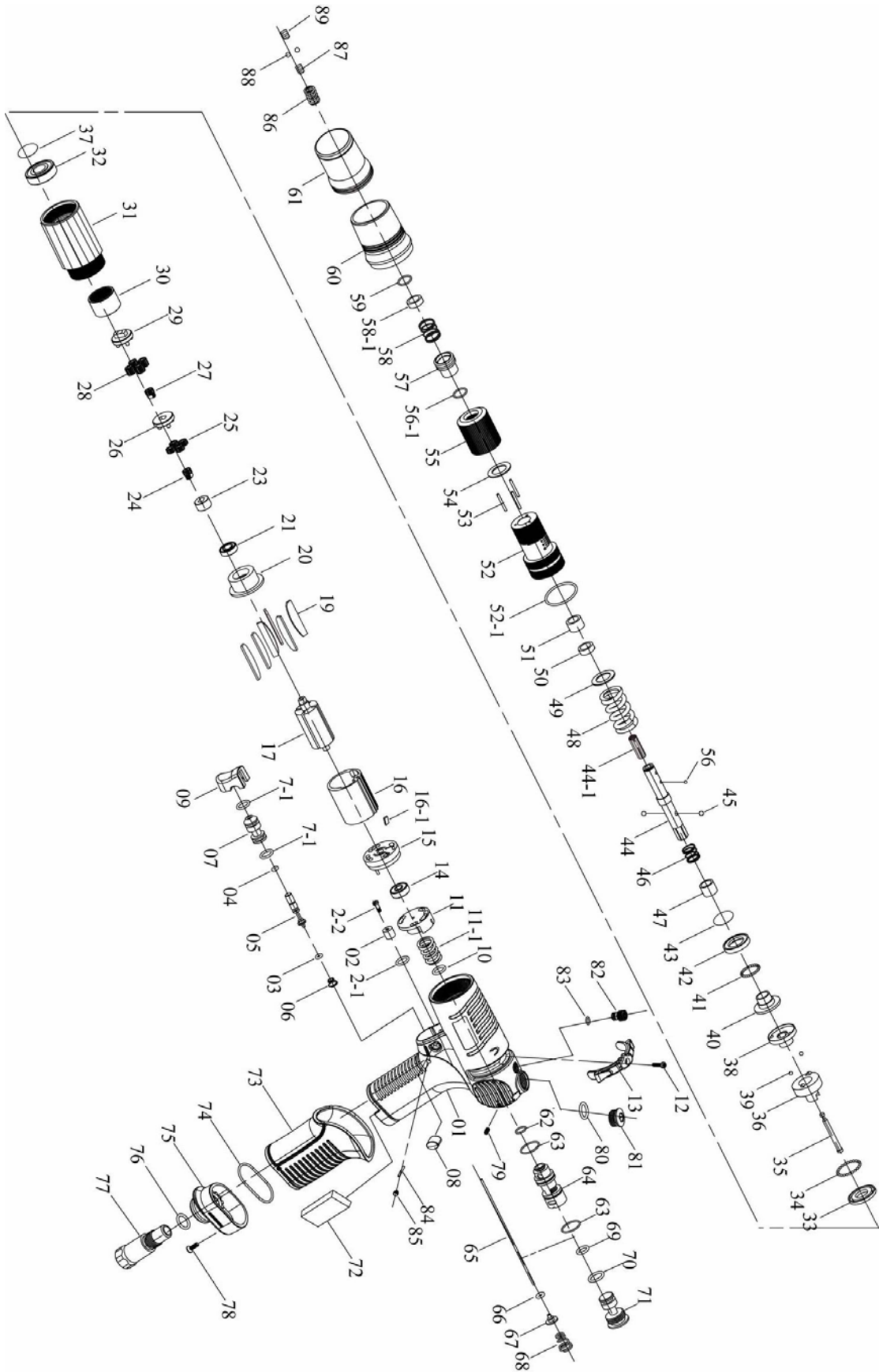


# PNEUMATIC SCREWDRIVER MODEL NO.

XP48P



## PNEUMATIC SCREWDRIVER MODEL NO.

XP48P

| No.  | Part No.    | Part Name              | Q'ty | No.  | Part No.  | Part Name               | Q'ty |
|------|-------------|------------------------|------|------|-----------|-------------------------|------|
| 1    | 63-5L2032   | Pistol Housing [Black] | 1    | 45   | 63-7S2105 | Ball                    | 2    |
| 2    | 63-2C2002   | Blank Cap              | 1    | 46   | 63-6N5110 | Spring                  | 1    |
| 2-1  | 63-7Q2008   | O Ring                 | 1    | 47   | 63-3S2227 | Slide Base              | 1    |
| 2-2  | 63-7S2106-1 | Set Screw              | 1    | 48   | 63-6N5007 | Torque Spring           | 1    |
| 3    | 63-7Q2006   | O Ring                 | 1    | 49   | 63-2S5121 | Washer                  | 1    |
| 4    | 63-7Q6112   | Valve O-Ring           | 1    | 50   | 63-3S2109 | Bushing                 | 1    |
| 5    | 63-6S2023   | Valve Pin              | 1    | 51   | 63-2S2241 | Anvil Bushing           | 1    |
| 6    | 63-6N2116   | Cone Spring            | 1    | 52   | 63-3A5201 | Clutch Housing          | 1    |
| 7    | 63-6S2027   | Valve Bushing          | 1    | 52-1 | 63-2Q2003 | O Ring                  | 1    |
| 7-1  | 63-7Q2023   | O Ring                 | 2    | 53   | 63-6S2012 | Needle Pin              | 3    |
| 8    | 63-5L2111   | Cap                    | 2    | 54   | 63-3S5101 | Regulation Washer       | 1    |
| 9    | 63-5L2701   | Button [Black]         | 1    | 55   | 63-3A6001 | Torque Ring             | 1    |
| 10   | 63-7Q2011   | Valve O-Ring           | 1    | 56   | 63-7S3107 | Ball                    | 1    |
| 11   | 63-6S6104   | Valve                  | 1    | 56-1 | 63-3S2122 | Bushing                 | 1    |
| 11-1 | 63-6N5006   | Spring                 | 1    | 57   | 63-5S2009 | Bit Slide Sleeve [Pull] | 1    |
| 12   | 63-7S2107   | Set Screw And Washer   | 1    | 58   | 63-6N2110 | Spring                  | 1    |
| 13   | 63-2L6026   | Switch [Black]         | 1    | 58-1 | 63-2S2109 | Washer [Pull]           | 1    |
| 14   | 63-7S5001   | Ball Bearing           | 1    | 59   | 63-6N2001 | C Ring                  | 1    |
| 15   | 63-1S6001-A | End Plate              | 1    | 60   | 63-5A3212 | Housing Cap             | 1    |
| 16   | 63-1P6005   | Cylinder               | 1    | 61   | 63-5A6510 | Torque Cover            | 1    |
| 16-1 | 63-2S2023   | Key                    | 1    | 62   | 63-7Q2008 | O Ring                  | 1    |
| 17   | 63-1S6045   | Rotor                  | 1    | 63   | 63-7Q6104 | O Ring                  | 2    |
| 19   | 63-1P6052   | Blade                  | 6    | 64   | 63-6S2101 | Valve Ring              | 1    |
| 20   | 63-1P6063   | Front Plate            | 1    | 65   | 63-6S6002 | Operation Rod           | 1    |
| 21   | 63-7S2002   | Ball Bearing           | 1    | 66   | 63-7Q2006 | O Ring                  | 1    |
| 23   | 63-1S3050   | Connect                | 1    | 67   | 63-6S2021 | Valve Plate             | 1    |
| 24   | 63-1P2271   | 21T Main Gear          | 1    | 68   | 63-6N2107 | Cone Spring             | 1    |
| 25   | 63-1P2102   | 10T Plant Gear         | 7    | 69   | 63-7Q6103 | O Ring                  | 1    |
| 26   | 63-1P6294   | Third Gear Cage        | 1    | 70   | 63-2Q5001 | O Ring                  | 1    |
| 27   | 63-1G6271   | 21T Main Gear          | 1    | 71   | 63-2S2013 | Screw Cap               | 1    |
| 28   | 63-1P6111   | 10T Plant Gear         | 7    | 72   | 63-2P3040 | First Silencer          | 1    |
| 29   | 63-1P6296   | Third Gear Cage        | 1    | 73   | 63-5L6201 | Pistol Cover            | 1    |
| 30   | 63-1S2061   | Internal Gear          | 1    | 74   | 63-7Q2015 | O Ring                  | 1    |
| 31   | 63-5A6041   | Front Housing          | 1    | 75   | 63-2A6002 | Exhaust Deflector       | 1    |
| 32   | 63-7S6003   | Ball Bearing           | 1    | 76   | 63-2Q5001 | O Ring                  | 1    |
| 33   | 63-2S6103   | Retainer               | 1    | 77   | 63-2S2052 | Air Inlet Bushing [NPT] | 1    |
| 34   | 63-7S2102   | Ball                   | 32   | 78   | 63-7S2115 | Screw                   | 1    |
| 35   | 63-3S5001   | Pilot Pin              | 1    | 79   | 63-7S2150 | Screw                   | 2    |
| 36   | 63-3S5211   | Rear Clutch            | 1    | 80   | 63-2Q5001 | O Ring                  | 1    |
| 37   | 63-6N2006   | C Ring                 | 1    | 81   | 63-2S2011 | Screw Cap               | 1    |
| 38   | 63-3S5217   | Center Clutch          | 1    | 82   | 63-7S2122 | Screw                   | 1    |
| 39   | 63-7S2112   | Ball                   | 2    | 83   | 63-7Q2020 | O Ring                  | 1    |
| 40   | 63-3S5221   | End Clutch             | 1    | 84   | 63-7S5205 | Pin                     | 1    |
| 41   | 63-7S2102   | Ball                   | 25   | 85   | 63-7S2113 | Screw                   | 2    |
| 42   | 63-3S5231   | Ball Race              | 1    | 86   | 63-6N6001 | Spring                  | 1    |
| 43   | 63-6N2006   | C Ring                 | 1    | 87   | 63-7S2111 | Screw                   | 1    |
| 44   | 63-3S5032   | Anvil                  | 1    | 88   | 63-7S2102 | Ball                    | 2    |
| 44-1 | 63-7Q2002   | Regulate Screw         | 1    | 89   | 63-7S2111 | Screw                   | 1    |