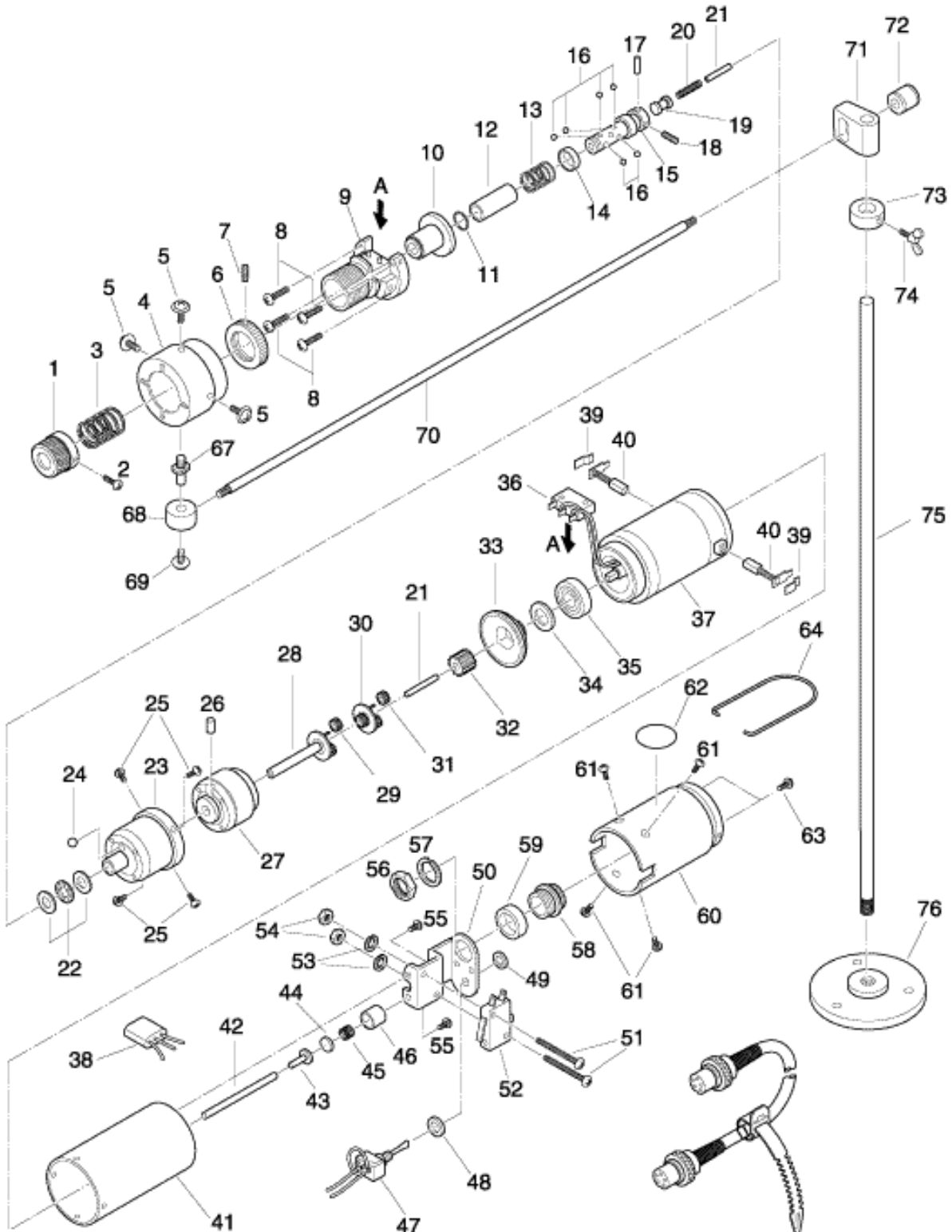


CL9000PS Parts List

Rev 3 May 23, 2022



CL9000PS Parts List

No.	Part Number	Description	Qty.
1	41CL9-0010	Torque Adjusting Nut	1
2	41CL9-0020	Fixing Screw	1
3	41F9-0040	Torque Adjusting Spring	1
4	41CL9-0040	Clutch Cover	1
5	41STB40X080	Set Screw 4x8	2
	41CL9-GRB	Transmission Assembly 6-34 (W/O 11,38)	1
6	41F9-0060	Torque Set Ring	1
7	41SH30X030	Set Screw 3x3	1
8	41SC30X120	Set Screw 3x12	4
9	41CL9-0100	Torque Adjusting Bolt	1
10	41F9-0100	Clutch Support	1
11	41CL65-0110	Collar Stopper	1
12	41CL9-0140	Joint Shaft Collar	1
13	41CL65-0130	Collar Spring	1
14	41CL9-0160	Ball Collar	1
15	41CL9-0170	Joint Shaft	1
16	BALL-02	Steel Ball 2.0mm	6
17	41CL65PS-0150	Joint Shaft Lock Pin 2x9.8	1
18	41SH30X030	Set Screw 3x3	1
19	41CL9-0200	Intermediate	1
20	41CL9-0210	Intermediate Spring	1
21	41CL9-0223	Center Pin A 1.8X40.5	1
22	41CL816-0200	Thrust Bearing	1
23	41CL816-0210	Gear Case	1
24	41BALL-0635	Steel Ball 6.35mm	1
25	41STP40X060	Set Screw 4x6	4
26	41CL65-0230	Cam Roller 5x7	1
27	41CL9-0280	Internal Gear	1
28	41CL9-0300	Lower Planet Cage	1
29	41CL825-0290	Planet Gear A	1
30	41CL816-0310	Upper Planet Cage	1
31	41CL816-0320	Planet Gear B	1
32	41CL816-0350	Pinion Gear	1
33	41CL9-0360	Gear Support	1
34	41CL9-0800-02	Washer 0.2	1
	41CL9-0800-05	Washer 0.5	1
35	41CL9-0370	Radial Ball Bearing 6903ZZ	1
36	41CL4-0230	Limit Switch	1
37	41CL9-0390	Motor (Includes 40,41)	1
38	41ACL10-0600	Noise Filter B	1
39	41CL9-0400	Carbon Brush Cover	1
40	41CL9-0410	Carbon Brush (PAIR)	1
41	41CL9-0120	Turning Grip	1
42	41CL9-0420-36	Push Rod	1
43	41CL9-0760	Damper Pin	1
44	41CL9-0740	Damper Washer	1
45	41CL9-0750	Damper Spring	1
46	41CL9-0730	Damper	1
	41CL9-CC	Circuit Assembly 47 - 59 (W/O 55)	1
47	41CL9-0430	For/Rev Switch W/Neutral(Includes 48,49)	1
50	41CL9-0450	Setting Panel	1
51	41STP30X160	Set Screw 3x16	2
52	41CL65PS-0610	Starting Switch	1
53	41SW30	Washer 3mm	2
54	41SN30	Hexagonal Nut M3	2
55	41STBB40X060	Set Screw 4x6	1

CL9000PS Parts List

No.	Part Number	Description	Qty.
58	41CL9-0550	5 - Pin Terminal (Includes 56,57)	1
59	41CL9-0540	Up Ring	1
60	41CL9-0560	Switch Cover	1
61	41STPB30X100	Set Screw 3x10	4
62	41CL9-0580	Name Plate	1
63	41-STB30X055	Set Screw 3x5.5	1
64	41CL65-0650	Hanger	1
65	41CL9-0610	5 - Cord of Same Connector Ends	1
66	41CL65-0670	Free-Up Belt	1
	41CL9-SAS	Stand Arm Set 67 - 76	1
	41CL9-ARM	Arm Assembly 67 - 72	1
67	41CL9-0630	Turret Shaft	1
68	41CL9-0640	Turret	1
69	41SPW40X080	Set Screw 4x8	1
70	41CL9-0660	Sliding Arm	1
71	41CL9-0671	Turning Holder	1
72	41CL9-0680	Arm-edge Knob	1
	41CL9-STD	Stand Assembly 73 - 76	1
73	41CL9-0690	Station	1
74	41CL9-0700	Station Stopper	1
75	41CL9-0710	Column	1
76	41CL9-0720	Stand Base	1

Mountz Calibration & Repair Services

Mountz Inc. features an experienced calibration and repair staff. Our trained technicians can calibrate and repair most any tool. Mountz provides rapid service with quality that you can trust as we offer three state-of-the-art calibration lab and repair facilities that can calibrate up to 20,000 lbf.ft.

With over 55 years of experience, Mountz's in-depth knowledge of torque is reflected in our tool's craftsmanship and our ability to provide solutions to both common and uncommon torque applications. We perform calibrations in accordance with ANSI/NCSL-Z540. Mountz is dedicated solely to the manufacturing, marketing and servicing of high quality torque tools.

Mountz is an ISO 9001 certified and ISO 17025 accredited company.

Testing Power Tools:

1. Application Method: Use a torque analyzer in "Peak Mode" with a rotary transducer between the power tool and the actual application. This is the best way to test since you are using the actual joint as the test station. You will see the actual torque applied to the fastener. **Caution:** Variances in tool performance may occur do to the addition of the rotary transducer.
2. Simulated Method: Always use a quality joint rate simulator (run down adapter) with a torque analyzer when testing power tools in a simulated application. Use Joint rate and Breakaway methods to obtain most accurate torque readings in a simulated rundown.

Mountz Service Locations

Eastern Service Center

19051 Underwood Rd.
Foley, AL 36535
Phone: (251) 943-4125
Fax: (251) 943-4979

Western Service Center

1080 N.11th Street
San Jose, CA 95112
Phone: (408) 292-2214
Fax: (408) 292-2733

www.mountztorque.com
sales@mountztorque.com

Download a "Service Form" and include a copy when you send the tools in to be serviced.