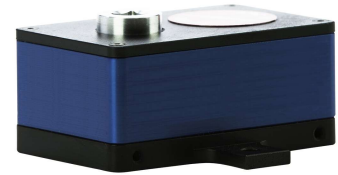


MTX LOW TORQUE REACTION SENSORS

- Torque Sensor for testing and calibrating low torque hand screwdrivers, wrenches and power tools
- The low profile design makes it ideal for calibrating robotic drivers on the assembly line
- Features ARC II technology, an instant auto-recognition system of the MTX connected to the PTT or LTT torque testers
- Supplied with a Free ISO 17025 Certification of Calibration
- Mountable and bi-directional
- Accuracy $\pm 0.25\%$ of reading



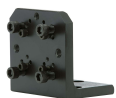
Torque Ranges

Models	Item #	American	S.I.	Drive Size
MTX10z	079007	1 - 10 ozf.in	0.7 - 7.1 cN.m	1/4" F/Sq
MTX20z	079008	2 - 20 ozf.in	1.5 - 14 cN.m	1/4" F/Sq
MTX40z	079009	4 - 40 ozf.in	2.9 - 28.2 cN.m	1/4" F/Sq
MTX80z	079010	8 - 80 ozf.in	5.7 - 56.5 cN.m	1/4" F/Sq
MTX160z	079011	16 - 160 ozf.in	11.3 - 113 cN.m	1/4" F/Sq

Related Products

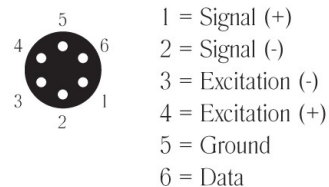


MTX Cables
 For connecting the MTX to LTT or PTT
Item # 072003



Mounting Bracket
MB-1 (Item # 062109)

Cable Connection Diagram



Note! *This is the stand alone accuracy for the torque sensor. When the sensor is coupled with a Mountz torque analyzer, there is a system accuracy. Review the system accuracy listed with each torque analyzer.

Warning: Always use a run down adapter when testing power tools.