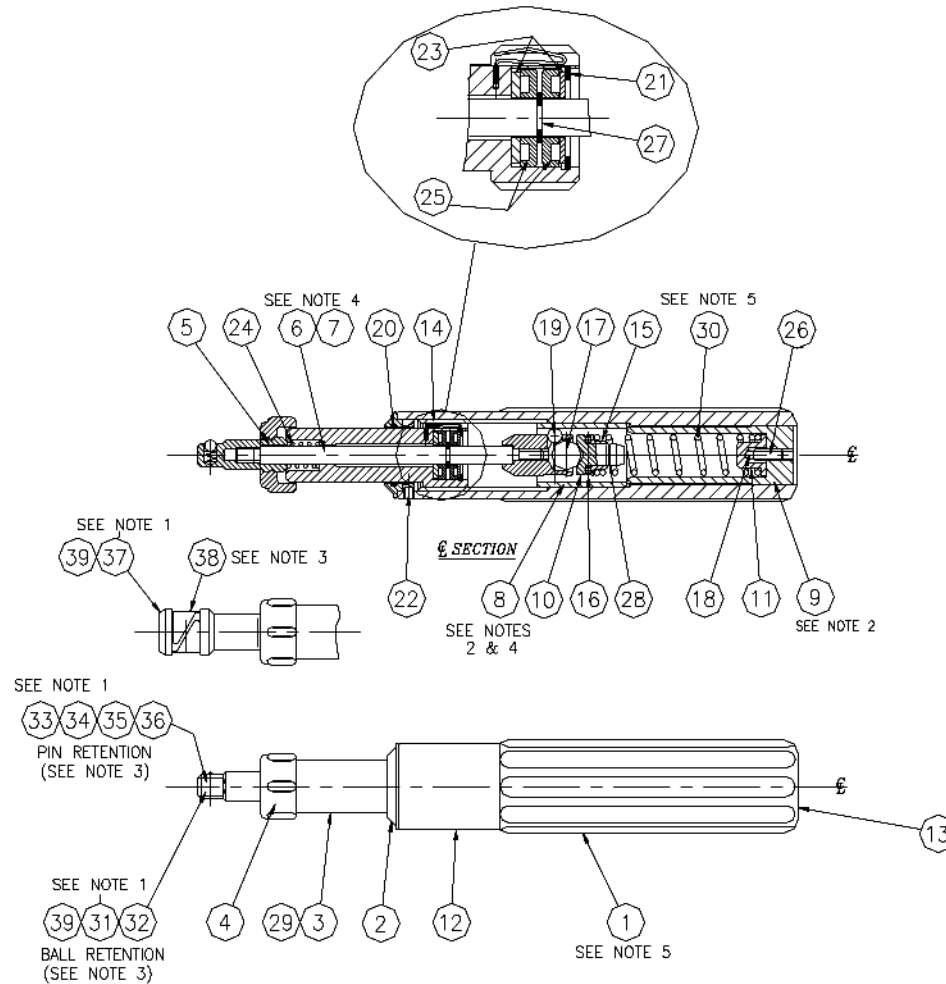


# MT-120 & MT-12 MicroTorque Screwdriver Parts List

Rev 1.1 4/13/205



**Contact**  
**Mountz Inc.**  
 Phone: 408.292.2214  
 Fax: 408.292.2733  
 sales@mountztorque.com  
 www.mountztorque.com

 **Twitter: @mountztorque**

Looking for fasteners?  
 www.mrmetric.com

**mr.**  
**metric®**



# MT-120 & MT-12 MicroTorque Screwdriver Parts List

Rev 1.1 4/13/205

No.	Part #	Description	QTY	Remarks	No.	Part #	Description	QTY	Remarks
1	20-A57345	Handle - Gloss Black	1		33	20-A62960	Pin	1	Pin Retention
3	20-B57361	Adjusting Screw - Plain	1		34	20-A64620	1/4 in Square drive body	1	Pin Retention
4	20-B81370	Adjusting Grip	1	Includes item 5	35	20-A59850	Spring	1	Pin Retention
5	20-A81360	Nut	1		36	20-A59870	Spring cup	1	Pin Retention
6	20-A99330	Spindle	1		37	20-A13160	1/4in A/F F/Hex body	1	Pin Retention
7	20-A13170	Ball Housing	1		38	20-A56640	Spring Clip	1	S/Assy A57750
8	20-A85000	Cam Ring	1		39	20-P10650	Steel Ball - 1/8in Dia	1	S/Assy A57750
9	20-A10750	End Plug	1						
10	20-A57440	Spring Thrust Pad	1						
11	20-A10330	Spring Seat	1						
12	20-B94662	Tool label	1						
13	20-A67690	Quality control disc	1						
14	20-A76940	Hair spring	1						
15	20-A77900	Spring pad	1						
16	20-A85900	Thrust bearing	1						
17	20-P10540	Steel ball - 5/16in Dia	1						
18	20-P10560	Steel ball - 3/32in Dia	1						
19	20-P10610	Steel Ball - 5/32in Dia	3						
20	20-P11060	O' Ring - Square section	1						
21	20-P11070	Circlip - internal	1						
22	20-P11080	Socket set screw	3						
23	20-P11090	Thrust washer	2						
24	20-P11100	Spring	1						
25	20-P11110	Thrust bearing	2						
26	20-P23060	Socket set screw	1						
27	20-P15880	Circlip - external	1						
28	20-P17180	Wire Ring	1						
		VARIABLE PARTS:							
2	20-A65365	Bezel non engraved	1						
	20-A57355	Bezel non decimal	1						
29	20-A70970	Adjusting Screw - Engraved	1	Imperial - ozf.in					
	20-A59100	Adjusting Screw - Engraved	1	Metric - cN.m					
	20-A82040	Adjusting Screw - Engraved	1	Metric - kgf.cm					
	20-B86390	Adjusting Screw - Engraved	1	Dual - ozf.in/cN.m					
30	20-A57461	Main Spring - Imperial (ozf.in)	1						
	20-A57462	Main Spring - Metric (Both)	1	Also Dual Scale					
	20-A57463	Main Spring - Imperial (lbf.in)	1						
31	20-A13190	1/4in Square Drive body	1	Ball Retention					
32	20-A10031	Ball catch spring	1	Ball Retention					

Notes:

1. Secure with Loctite 648
2. Items 8 & 8 Press Fit
3. Assembly with male square or F/Hex drives as required.
4. Apply BP.OG> grease to ball housing & cam
5. Apply BP LS-EP1 brown grease on adjusting screw threads in handle, on main spring.

Important Note:

Use only light lubrication on thrust bearings (item 25) - oil or light grease.  
All other moving parts to be lightly greased.