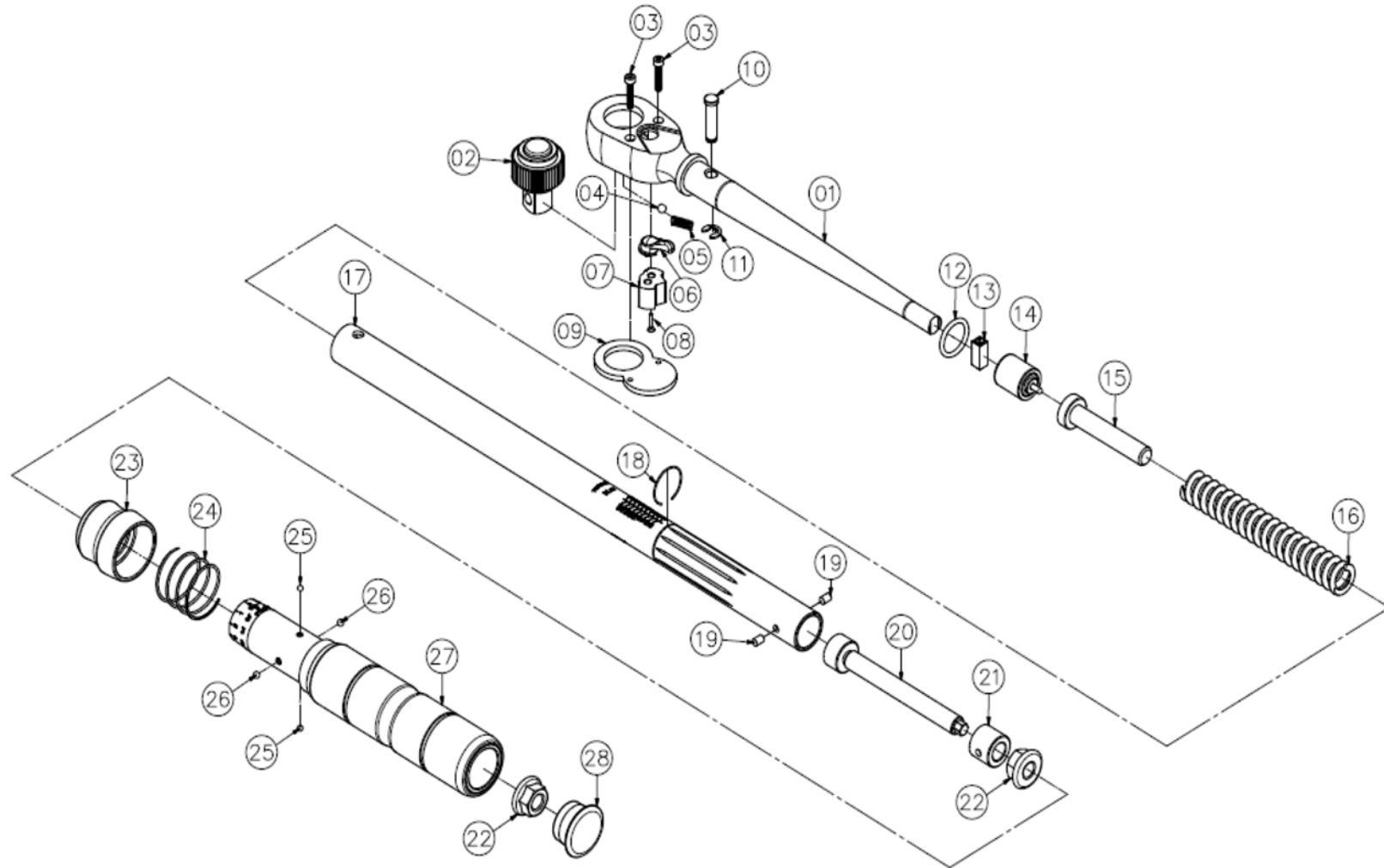


EPT250i-A Click Wrench

Rev 1.1 5/18/2015



EPT250i-A Click Wrench

Rev 1.1 5/18/2015

No.	Part Number	Description	Qty.
1	EPT250i-A-1	Main body	1
2	EPT250i-A-2	3/8" Square drive	1
3	EPT250i-A-3	Screw for steel cover	2
4	EPT250i-A-4	Steel ball for pawl	1
5	EPT250i-A-5	Spring for pawl	1
6	EPT250i-A-6	Switch	1
7	EPT250i-A-7	Pawl	1
8	EPT250i-A-8	Screw for pawl	1
9	EPT250i-A-9	Steel cover	1
10	EPT250i-A-10	Pin	1
11	EPT250i-A-11	E Ring	1
12	EPT250i-A-12	O Ring	1
13	EPT250i-A-13	Jumping square	1
14	EPT250i-A-14	Cam set	1
15	EPT250i-A-15	Spring base set	1
16	EPT250i-A-16	Spring	1
17	EPT250i-A-17	Steel tube	1
18	EPT250i-A-18	C Ring	1
19	EPT250i-A-19	Pin	2
20	EPT250i-A-20	Adjustable lever	1
21	EPT250i-A-21	Screw base	1
22	EPT250i-A-22	Hex screw nut	2
23	EPT250i-A-23	Ring-pull	1
24	EPT250i-A-24	Lock spring	1
25	EPT250i-A-25	3.0 mm Steel ball	2
26	EPT250i-A-26	3.5 mm Steel ball	2
27	EPT250i-A-27	Aluminum handle set	1
28	EPT250i-A-28	Tail cover	1

Ratchet Repair Kit Item # 82-34308

Contents:

3/8" Square Drive (Qty 1)
Pawl (Qty 1)
Switch (Qty 1)
Steel Ball for Pawl (Qty 1)
Screw for Steel Cover (Qty 2)
Screw for Pawl (Qty 1)
Spring for Pawl (Qty 1)
Steel Cover (Qty 1)

