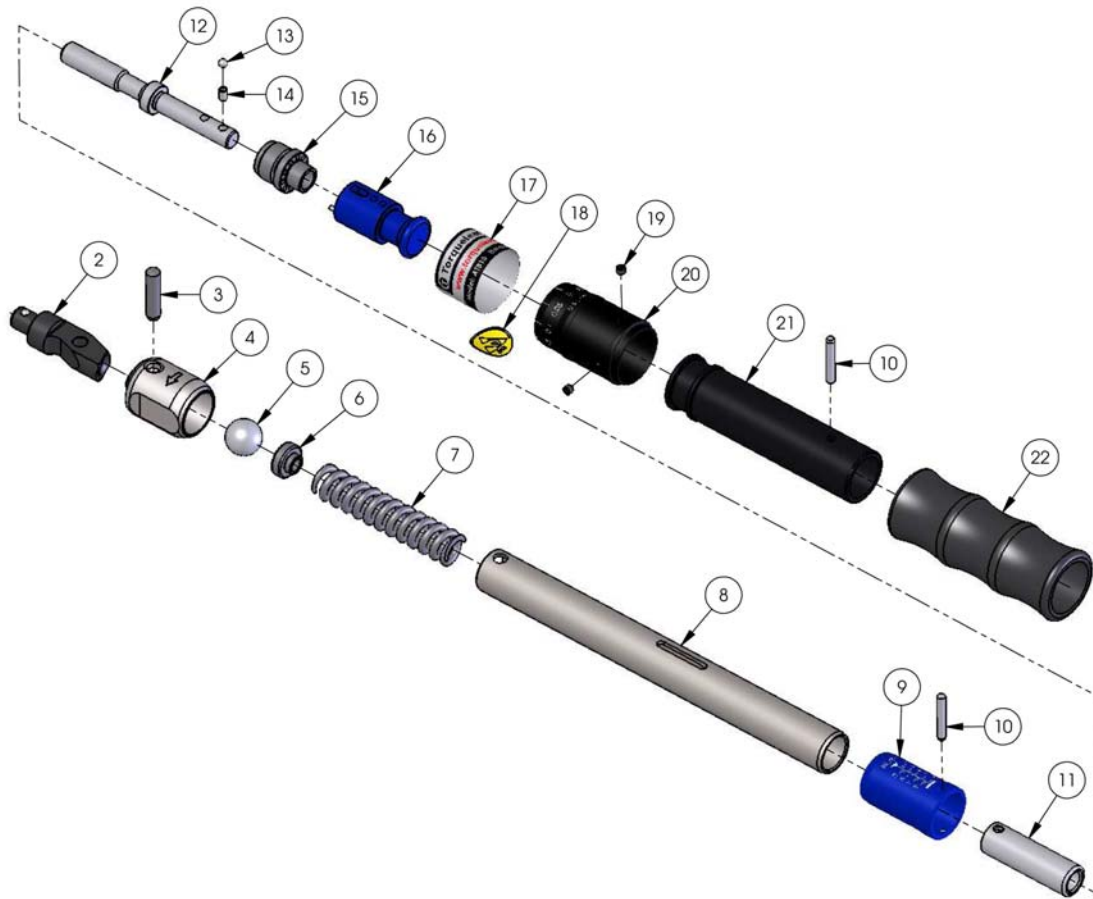


ATB5 Break-Over Wrench

Rev 1.0 11/11/2013





ATB5 Break-Over Wrench

Rev 1.0 11/11/2013

No.	Part Number	Description	Qty.	Note
1				
2.	20-B44970	CARRIER - 8mm SPIGOT	1	
3.	20-P34780	DOWEL PIN - DIA 5x22 - ISO8734	1	
4.	20-A44960	BODY	1	
5.	20-P34790	STEEL BALL - DIA 13mm	1	
6	20-A33230	SPRING PAD	1	
7.	20-A92770	MAIN SPRING	1	
8.	20-A44950	HANDLE TUBE	1	
9.	-	SCALE SLEEVE	1	PART IS MODEL SPECIFIC - MOUNTZ
10.	20-P33690	DOWEL PIN - DIA 3x20 - ISO8734	2	
11.	20-A44950	SPRING ADJUSTER - M8x0.8P	1	For ATB5
	20-A41542	SPRING ADJUSTER - M8x1.0P	1	For ATB5i
12.	20-A41531	ADJUSTING SCREW - M8x0.8P	1	For ATB5
	20-A41532	ADJUSTING SCREW - M8x1.0P	1	For ATB5i
13.	20-P15020	STEEL BALL - DIA 3mm	1	
14.	20-A73670	BALL CATCH SPRING	1	
15.	20-A41520	LOCK STOP	1	
16.	20-A41511	LOCK KNOB SUB-ASSY - BLUE	1	
17.	20-B41690	BEZEL LABEL	1	
18.	20-A20711	ESD LABEL	1	
19.	20-P14580	M3x3 SKT SET SCREW - CUP	2	
20.	-	SCALE BEZEL	1	PART IS MODEL SPECIFIC - MOUNTZ
21.	20-A41550	HANDLE GRIP TUBE	1	
22.	20-A74752	RUBBER GRIP	1	