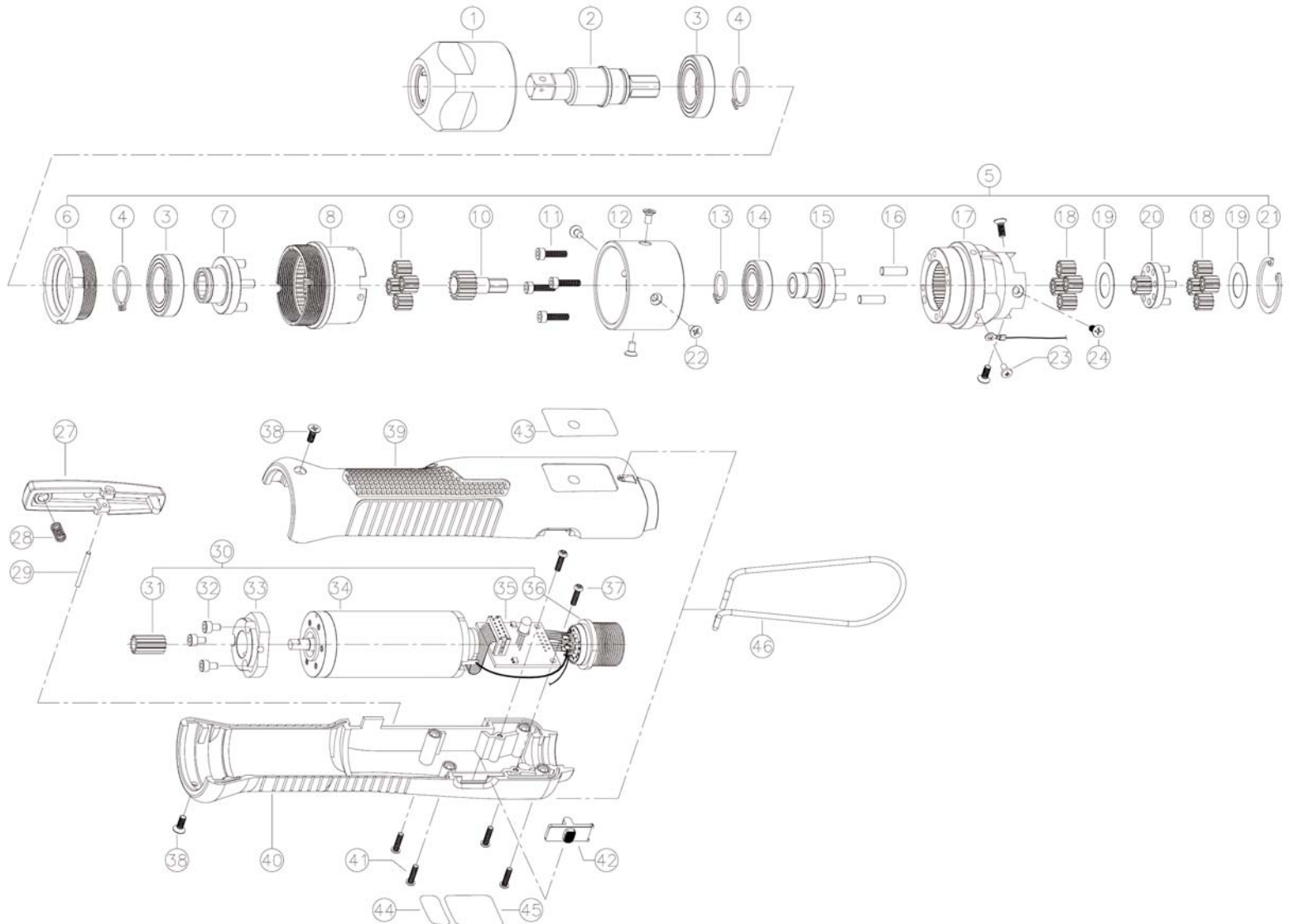


# MD3264-Q Electric Driver (1/2 Sq. Dr.)

Rev 1.0 (6/27/18)





# MD3264-Q Electric Driver (1/2 Sq. Dr.)

Rev 1.0 (6/27/18)

No.	Part Number	Description	Qty.	No.	Part Number	Description	Qty.
1	13-300105	COUPLING NUT ASSY	1	38	13-500268	SCREW	2
2	13-300106	DRIVEN SPINDLE ASSY	1	39	13-500134	MD32 UPPER HOUSING	1
3	13-500247	BALL BEARING	2	40	13-500133	MD32 LOWER HOUSING	1
4	13-500449	SNAP RING	2	41	13-500266	SCREW	4
5	13-300109	GEAR ASSY	1	42	13-300035	FR SWITCH ASSY	1
6	13-500543	LOCK NUT	1	43	13-500361	LED WINDOW LABEL	1
7	13-300111	3RD GEAR HOLDER ASSY	1	44	13-500359	DRIVER SN LABEL	1
8	13-500432	2ND GEAR CASE	1	45	13-500538	DRIVER NAME LABEL (MOUNTZ)	1
9	13-500227	3RD IDLE GEAR	4	46	13-500331	HOOK	1
10	13-500229	2ND PINION GEAR	1				
11	13-500278	WRENCH BOLT	4		310056	CABLE - MD-SERIES (3M LENGTH)	1
12	13-500433	BEARING COVER	1		310088	CABLE - MD-SERIES (5M LENGTH)	1
13	13-500288	SNAP RING	1				
14	13-500244	BALL BEARING	1				
15	13-300113	2ND GEAR HOLDER ASSY	1				
16	13-500264	PIN	2				
17	13-500431	1ST GEAR CASE	1				
18	13-500225	IDLE GEAR	8				
19	13-500440	WASHER	2				
20	13-300022	1ST GEAR HOLDER ASSY	1				
21	13-500441	SNAP RING	1				
22	13-500443	SCREW	4				
23	13-500269	SCREW	1				
24	13-500268	SCREW	3				
27	13-300034	LEVER ASSY	1				
28	13-500324	LEVER SPRING	1				
29	13-500263	PIN	1				
30	13-300028	MOTOR SET	1				
31	13-500224	MOTOR PINION GEAR	1				
32	13-500276	WRENCH BOLT	3				
33	13-500193	MOTOR FLANGE	1				
34	13-300014	MOTOR ASSY	1				
35	13-300030	DRIVER PCB SET	1				
36	13-500312	14P N- CONNECTOR	1				
37	13-500266	SCREW	2				