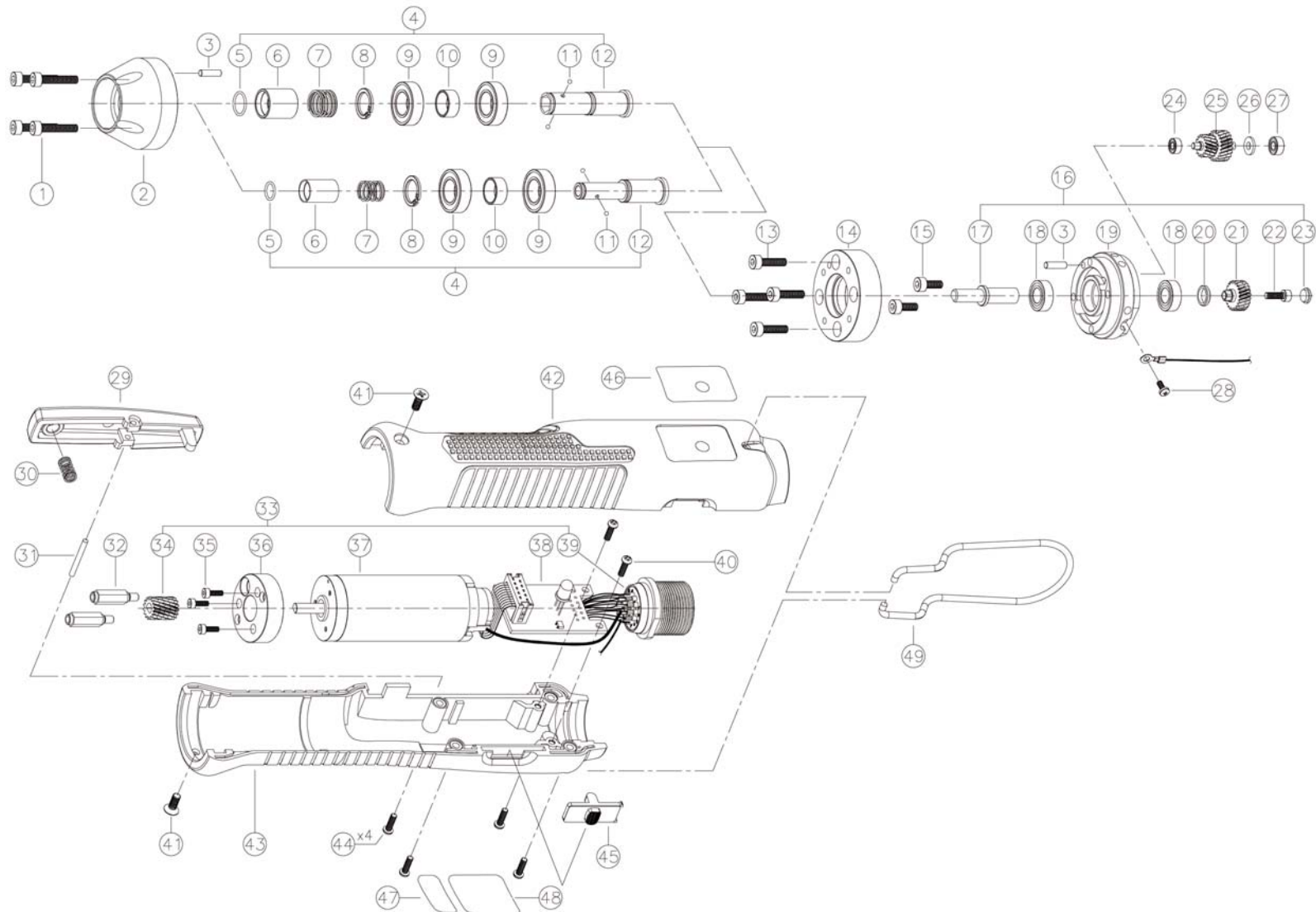


MD2602-A Electric Driver (1/4 F/Hex)

Rev 1.0 (6/20/18)





MD2602-A Electric Driver (1/4 F/Hex)

Rev 1.0 (6/20/18)

No.	Part Number	Description	Qty.	No.	Part Number	Description	Qty.
1	13-500274	WRENCH BOLT	4	38	13-300029	DRIVER PCB SET	1
2	13-500183	BEARING HOUSING	1	39	13-500312	14P N- CONNECTOR	1
3	13-500261	PIN	2	40	13-500266	SCREW	2
4	13-300070	BIT SOCKET ASSY	1	41	13-500443	SCREW	2
5	13-500466	C-RING	1	42	13-500131	MD26 UPPER HOUSING	1
6	13-500468	COLLAR (1/4 F/HEX DR.)	1	43	13-500132	MD26 LOWER HOUSING	1
7	13-500470	COLLAR SPRING	1	44	13-500266	SCREW	4
8	13-500447	SNAP RING	1	45	13-300035	FR SWITCH ASSY	1
9	13-500252	BALL BEARING	2	46	13-500360	LED WINDOW LABEL	1
10	13-500472	BEARING SPACER	1	47	13-500359	DRIVER SN LABEL	1
11	13-500473	BALL	2	48	13-500538	DRIVER NAME LABEL (MOUNTZ)	1
12	13-500474	BIT SOCKET (1/4 F/HEX DR.)	1	49	13-500325	HOOK	1
13	13-500279	WRENCH BOLT	4				
14	13-500182	BEARING COVER	1		310056	CABLE - MD-SERIES (3M LENGTH)	1
15	13-500277	WRENCH BOLT	2		310088	CABLE - MD-SERIES (5M LENGTH)	1
16	13-300074	BEARING CASE ASSY	1				
17	13-500180	CONNECTION SHAFT	1				
18	13-500249	BEARING	2				
19	13-500184	BEARING CASE	1				
20	13-500282	SNAP RING	1				
21	13-500269	SCREW	1				
22	13-300034	LEVER ASSY	1				
23	13-500324	LEVER SPRING	1				
24	13-500262	PIN	1				
25	13-500455	BEARING CASE SUPPORT	2				
26	13-300024	MOTOR SET	1				
27	13-500181	COUPLING	1				
28	13-500316	WRENCH BOLT	3				
29	13-500186	MOTOR FLANGE	1				
30	13-300013	MOTOR ASSY	1				
31	13-300029	DRIVER PCB SET	1				
32	13-500312	14P N- CONNECTOR	1				
33	13-500266	SCREW	2				
34	13-500443	SCREW	2				
35	13-500131	MD26 UPPER HOUSING	1				
36	13-500132	MD26 LOWER HOUSING	1				
37	13-500266	SCREW	4				