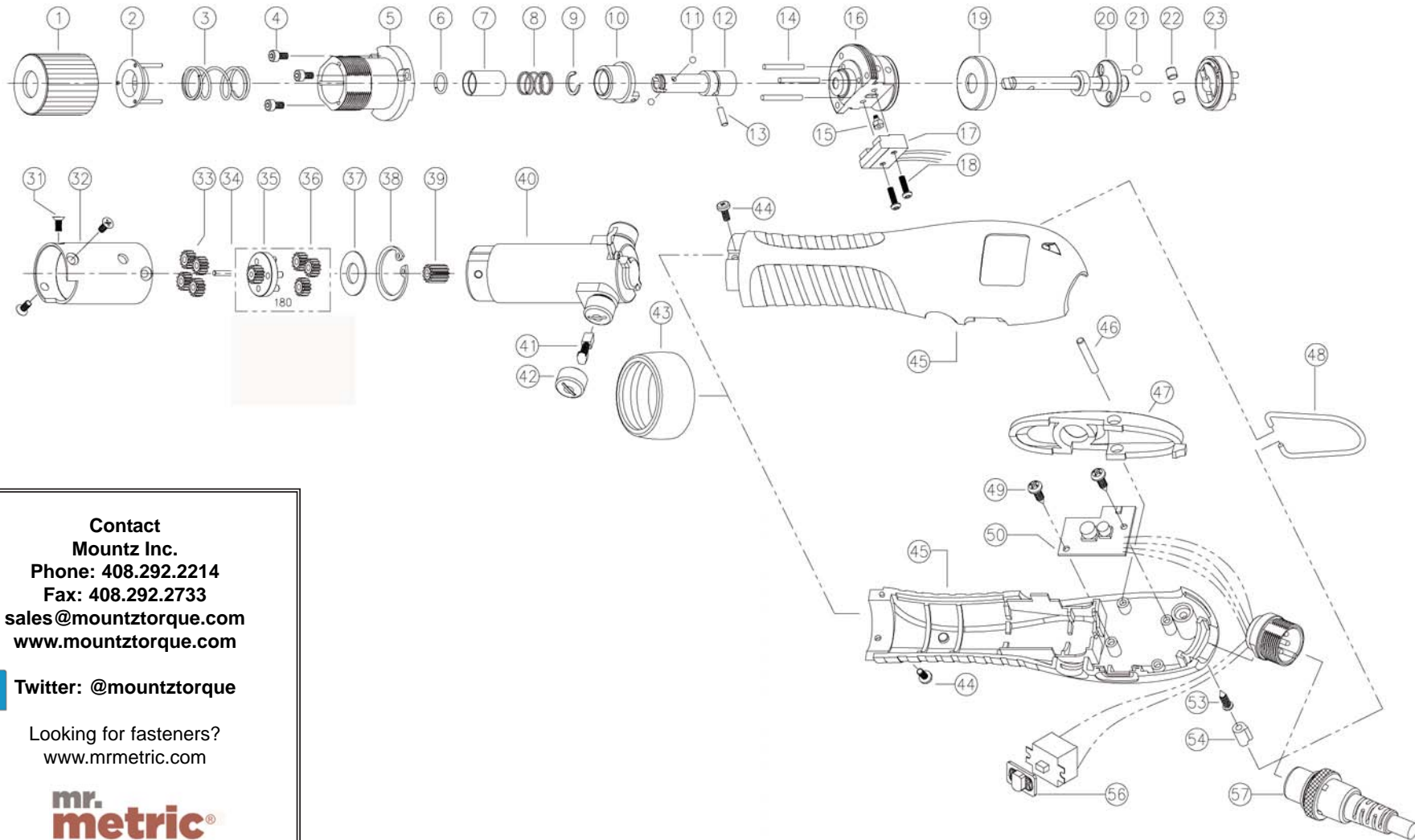


# EF180P-A ESD Electric Driver (1/4 F/Hex)

Rev 2.2 5/5/15



**Contact**  
**Mountz Inc.**  
**Phone: 408.292.2214**  
**Fax: 408.292.2733**  
**sales@mountztorque.com**  
**www.mountztorque.com**

 **Twitter: @mountztorque**

Looking for fasteners?  
[www.mrmetric.com](http://www.mrmetric.com)

**mr.  
metric**<sup>®</sup>  
*your trusted source for screws, nuts, washers and more*  
a division of Mountz, Inc. • established 1965



# EF180P-A ESD Electric Driver (1/4 F/Hex)

Rev 2.2 5/5/15

No.	Part Number	Description	Qty.	No.	Part Number	Description	Qty.
1	14-PFE1801	Torque Adjuster	1	38	14-PFE1903	Snap Ring	1
2	14-PFE1132	Torque Spring Holder Assembly	1	39	14-PFE1236	Pinion Gear	1
3	14-5000062	Torque Spring Natural	1	40	14-PEF4005	Motor Assembly	1
	14-PFE1815	Torque Spring Silver	1	41	14-PEF4100	Carbon Brush	2
4	14-PSW2201	Wrench Bolt (M Hex M2.5x5L)	3	42	14-510660	Brush Cap	2
5	14-PFE1131	Top Cover Assembly	1	43	14-PEF1802	Housing Nut	1
6	14-PFE1973	Bit Socket (for 1/4 Hex Drive)	1	44	14-PSW2206	Screw Phillips M2.6x5L	2
7	14-PFE1410	Bit Collar (for 1/4 Hex Drive)	1	45	14-3000925	EF Housing Set - ESD (Black)	1
8	14-PFE1964	Collar Spring (for 1/4 Hex Drive)	1	46	14-PEF1840	Lever Pin	1
9	14-PFE1955	C-Ring	1	47	14-5000015	Attachment	1
10	14-3000030	Sleeve Assembly EF V3	1	48	14-PEK1803	Hook	1
11	220052	Steel Ball 1.5 (for 1/4 Hex Drive)	2	49	14-520476	Screw	2
12	14-PFE1412	Bit Socket (for 1/4 Hex Drive)	1	50	14-3000109	Control Set EF (Push-to-Start)	1
13	14-PFE1413	Holder Pin 2.5x7.5L	1	53	14-502302	Screw Torx 3x12L	1
14	14-PFE1327	Needle Pin 2x19.55L	3	54	14-PEF1836A	Insert (ESD)	1
15	14-3000043	Magnet Holder Assembly	1	56	14-PAL1130	Switch Cover Assembly	1
16	14-PFE1119	Bearing Cover Assembly (Push-to-Start)	1	58	14-PELZ932A	Cable 6 Pin (3m Standard)	1
17	14-3000037	Sensor Assembly (Push-to-Start)	1				
18	14-PSW2211	Screw Phillips M2.3x8L	2				
19	14-PFE1319	Slide Ring	1				
20	14-PFE1114	Shaft (Push-to-Start)	1				
21	14-PAL1932	Steel Ball	2				
22	14-PFE1910	Roller	2				
23	14-PFE1106	Clutch Assembly	1				
31	14-PSW2207	Screw Phillips M2.6x6L	3				
32	14-PFE1201A	Gear Case	1				
33	14-PFE1212	2nd Idle Gear (12T)	4				
34	14-PFE1915	Center Pin	1				
35	14-PFE1102	Gear Holder Assembly	1				
36	14-PFE1217	1st Idle Gear 13T	4				
37	14-PFE1947	Washer	1				