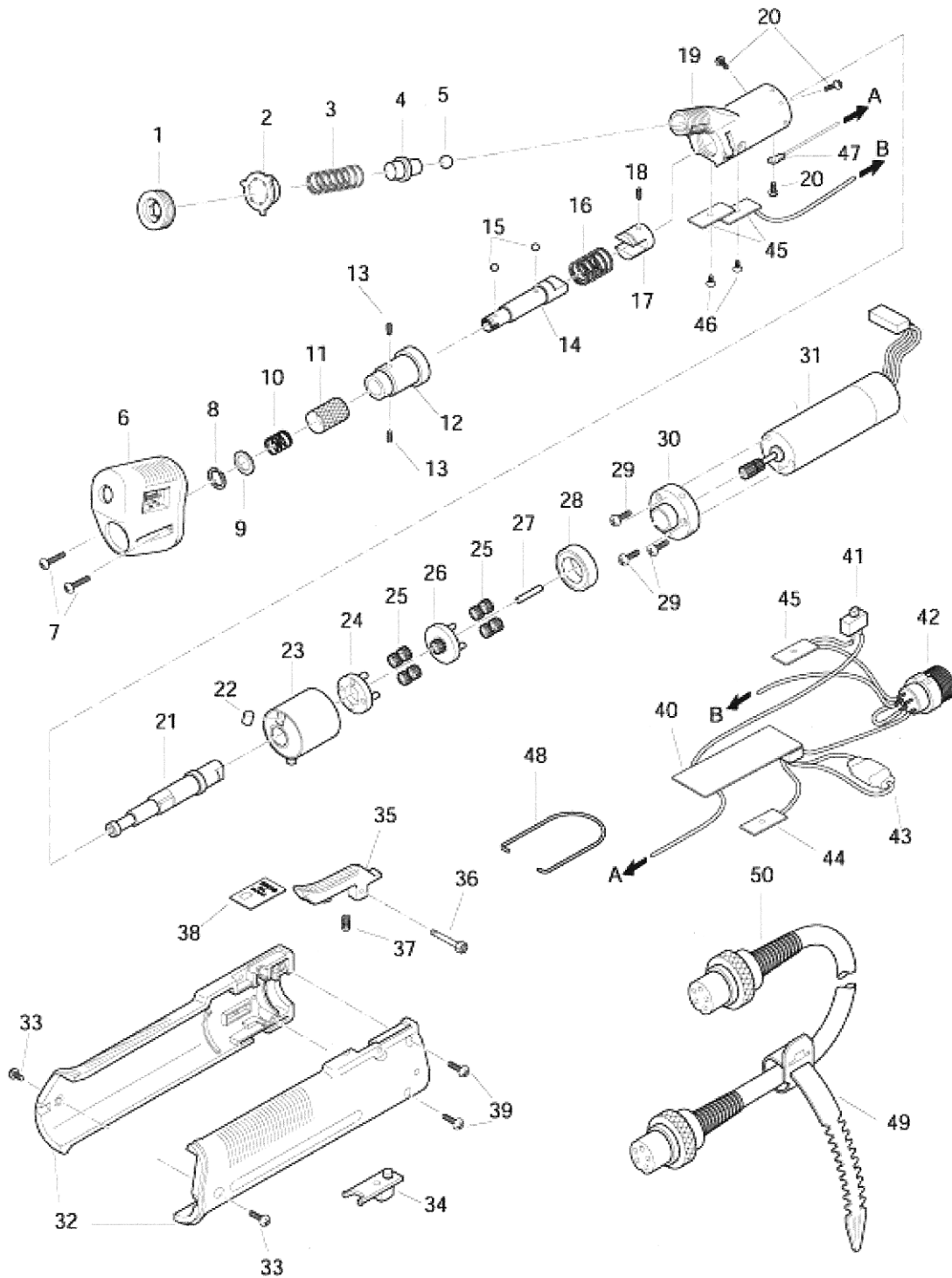


BL5000

Version 1.1





BL5000

| No. | Part Number | Description | Qty. |
|-----|--------------------|---|------|
| 1 | 41-BL4-0011 | Torque Adj. Nut New | 1 |
| 2 | 41-BL4-0021 | Torque Adj. Spring Holder New | 1 |
| 3 | 41-BL4-0051-1.6 | Torque Adj. Spring (Purple) new | 1 |
| 4 | 41-BL4-0060 | Clutch Panel | 1 |
| 5 | 41-BALL-05 | Steel Ball 5.0mm | 1 |
| 6 | 41-BL4-0172 | Clutch Cover (NEW) | 1 |
| 7 | 41-STP26X080 | Set Screw 2.6x8 | 1 |
| 8 | 41-CL4X-0090 | Collar Stopper (for 5.0 Hex Dr & 1/4 F/Hex Dr.) | 1 |
| | 41-CL4-0090 | Collar Stopper (for 4mm HIOS Dr.) | 1 |
| 9 | 41-BL4X-0630 | Washer 9.1x11.0x0.5 (for 1/4 F/Hex Dr.) | 1 |
| | 41-BL4X-0630-5 | Washer 8.5x10.0x0.5 (for 5.0 Hex Dr.) | 1 |
| | 41-CL3-0620 | Washer 2.6x6.0.0x0.5 (for 4mm HIOS Dr.) | 1 |
| 10 | 41-BL4X-0120 | Collar Spring for (for 1/4 F/Hex Dr.) | 1 |
| | 41-BL4-0120 | Collar Spring for (for 4mm HIOS Dr.) | 1 |
| | 41-BL4-0120-5 | Collar Spring for (for 5.0 Hex Dr.) | 1 |
| 11 | 41-BL4X-0070 | Joint Shaft Collar (for 1/4 F/Hex Dr.) | 1 |
| | 41-BL4-0070 | Joint Shaft Collar (for 4mm HIOS Dr.) | 1 |
| | 41-BL4X-0070-5 | Joint Shaft Collar (for 5.0 Hex Dr.) | 1 |
| 12 | 41-BL4-0080 | E-Ring | 1 |
| 13 | 41-BL4X-3141 | Joint Shaft Cover (w/Magnet) | 1 |
| 14 | 41-BL4X-0101 | Joint Shaft (for 1/4 F/Hex Dr.) | 1 |
| | 41-BL4-0101 | Joint Shaft (for 4mm HIOS Dr.) | 1 |
| | 41-BL4-0101-5 | Joint Shaft (for 5.0 Hex Dr.) | 1 |
| 15 | 41-BALL-02 | Steel Ball 2.0mm | 1 |
| 16 | 41-BL4-0130 | Push Spring | 1 |
| 17 | 41-BL4-0180 | Joint | 1 |
| 18 | 41-SH26X050 | Hexagon Socket Set Screw 2.6x5 | 1 |
| 19 | 41-BL4-0191 | Gear Case New | 1 |
| 20 | 41-SPC26x050P3 | Set Screw 2.6x5P3 | 2 |
| 21 | 41-BL4-0201 | Lower Planet Shaft New | 1 |
| 22 | 41-CL4-0250 | Cam Roller | 1 |
| 23 | 41-BL4-3210 | Internal Gear (W/Magnet) | 1 |
| 24 | 41-BL4-0240 | Lower Floor | 1 |
| 25 | 41-VZ10-0302 | Planet Gear x8 | 8 |
| 26 | 41-VZ10-0331 | Upper Planet Cage | 1 |
| 27 | 41-F9-0260 | Center Pin | 1 |
| 28 | 41-BL4-0311 | Bearing | 1 |
| 29 | 41-STP20X050 | Set Screw 2.0x5 | 3 |
| 30 | 41-BL4-0301 | Motor Front Panel | 1 |
| 31 | 41-BL4-0342 | MOTOR | 1 |
| 32 | 41-BL4-0292 | PINION GEAR | 1 |
| 33 | 41-BL4-0541 | Body Case A&B | 1 |
| 34 | 41-SPPB26x120 | Set Screw 2.6x12 | 2 |
| 35 | 41-BL4-3361 | For/Rev Switch Lever | 1 |
| 36 | 41-BL4-3382 | Switch Lever (W/Magnet) | 1 |
| 37 | 41-BL4-0520 | Switch Lever Plunger | 1 |
| 38 | 41-CL4-0510 | Switch Lever Spring | 1 |
| 39 | 41-BL5-0420 | Name Plate | 1 |
| 40 | 41-BOHD5F35120NITP | Set Screw 3.5x12 | 1 |



BL5000

| No. | Part Number | Description | Qty. |
|-----|--------------------------|--|------|
| 41 | 41-BL5-CC2 | Circuit Assy (Item # 41-48 Except # 47) | 1 |
| 42 | 41-BL4-0370 | Push or Lever Change-Over Switch | 1 |
| 43 | 41-CL4-0580 | 5-Pin Connector | 1 |
| 44 | (Part of No 41 Assembly) | Resistor | 1 |
| 45 | (Part of No 41 Assembly) | Sensor PCB (Lower) | 1 |
| 46 | (Part of No 41 Assembly) | Sensor PCB (Upper) | 1 |
| 47 | 41-SPP20X050 | Set Screw 2.0x5 | 2 |
| 48 | (Part of No 41 Assembly) | Ground Connector | 1 |
| 49 | 41-CL65-0650 | Hanger | 1 |
| 50 | 41-CL4-0600 | Free-Up Belt | 1 |
| 51 | 41-CL4-0611 | 5-Core Cord W/Connectors In Both Ends | 1 |