

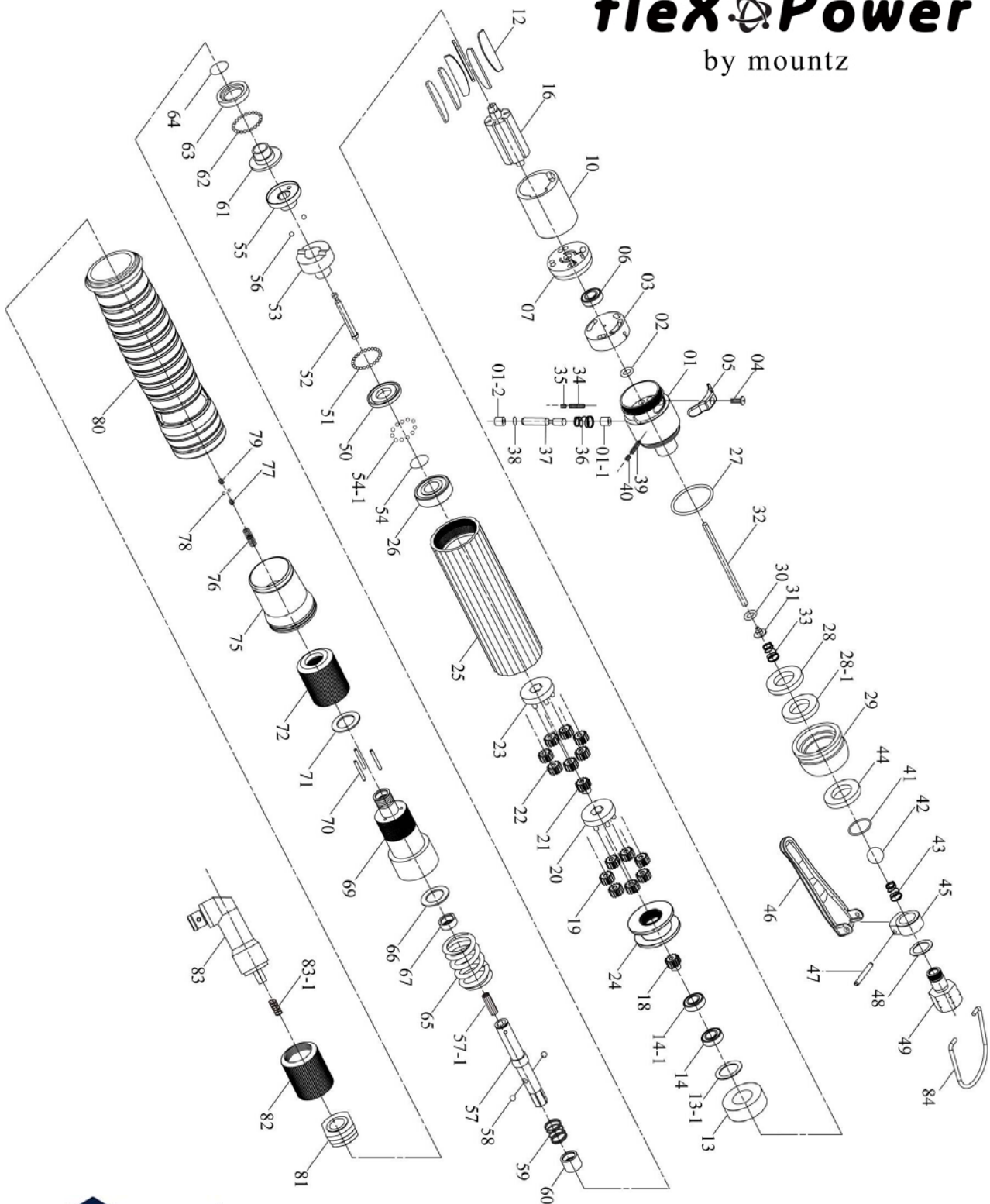
# PNEUMATIC SCREWDRIVER MODEL NO.

# XP35A

# flexPower

by mountz

XP35A



[www.mountztorque.com](http://www.mountztorque.com)

## PNEUMATIC SCREWDRIVER MODEL NO.

XP35A

| No.  | Part No.    | Part Name              | Q'ty | No.  | Part No.  | Part Name               | Q'ty |
|------|-------------|------------------------|------|------|-----------|-------------------------|------|
| 1    | 63-5A3102   | End Housing (Black)    | 1    | 44   | 63-2P3020 | Silencer                | 1    |
| 1-1  | 63-2S3010   | Inner Bushing          | 1    | 45   | 63-5A2001 | Lever Set               | 1    |
| 1-2  | 63-2S3001   | Outer Bushing          | 1    | 46   | 63-5L3102 | Lever                   | 1    |
| 2    | 63-7Q2005   | O Ring                 | 1    | 47   | 63-7S2202 | Roll pin                | 1    |
| 3    | 63-2P3000   | Valve                  | 1    | 48   | 63-2Q5001 | O Ring                  | 1    |
| 4    | 63-7S2100   | Set Screw And Washer   | 1    | 49   | 63-2S2010 | Air Inlet Bushing [PT]  | 1    |
| 5    | 63-2L3028   | Switch (Iron)          | 1    | 49   | 63-2S6005 | Air Inlet Bushing [PS]  | 1    |
| 6    | 63-7S2001   | Ball Bearing           | 1    | 49   | 63-2S2007 | Air Inlet Bushing [NPT] | 1    |
| 7    | 63-1S3001   | End Plate              | 1    | 50   | 63-2S2103 | Retainer                | 1    |
| 10   | 63-1P3005   | Cylinder               | 1    | 51   | 63-7S2102 | Ball                    | 28   |
| 12   | 63-1P3058   | Oil-Free Blade         | 6    | 52   | 63-3S2001 | Pilot Pin               | 1    |
| 13   | 63-1P3067   | Front Plate            | 1    | 53   | 63-3S2211 | Rear Clutch             | 1    |
| 13-1 | 63-2S5121   | Washer                 | 1    | 54   | 63-6N2006 | C Ring                  | 1    |
| 14   | 63-7S2002   | Ball Bearing           | 1    | 54-1 | 63-7S2102 | Ball                    | 13   |
| 14-1 | 63-7S2007   | Ball Bearing           | 1    | 55   | 63-3S2219 | Center Clutch           | 1    |
| 16   | 63-1S3045   | Rotor                  | 1    | 56   | 63-7S2112 | Ball                    | 2    |
| 18   | 63-1G6280   | 21T Main Gear          | 1    | 57   | 63-3S7055 | Anvil                   | 1    |
| 19   | 63-1P2102   | 10T Plant Gear         | 7    | 57-1 | 63-7Q2002 | Regulate Screw          | 1    |
| 20   | 63-1P6294   | Third Gear Cage        | 1    | 58   | 63-7S2105 | Ball                    | 2    |
| 21   | 63-1P2271   | 21T Main Gear          | 1    | 59   | 63-6N2110 | Spring                  | 1    |
| 22   | 63-1P2102   | 10T Plant Gear         | 7    | 60   | 63-3S2226 | Slide Base              | 1    |
| 23   | 63-1P6297   | Third Gear Cage        | 1    | 61   | 63-3S2222 | End Clutch              | 1    |
| 24   | 63-1S2061   | Internal Gear          | 1    | 62   | 63-7S2102 | Ball                    | 22   |
| 25   | 63-5A3009   | Center Housing (Black) | 1    | 63   | 63-3S2231 | Ball Race               | 1    |
| 26   | 63-7S5003   | Ball Bearing           | 1    | 64   | 63-6N3100 | C Ring                  | 1    |
| 27   | 63-7Q2015   | O Ring                 | 1    | 65   | 63-6N5008 | Torque Spring           | 1    |
| 28   | 63-2S2104   | Washer                 | 1    | 66   | 63-2S7121 | Washer                  | 1    |
| 28-1 | 63-2P3010   | Silencer               | 1    | 67   | 63-3S2118 | Bushing                 | 1    |
| 29   | 63-2A3005   | Exhaust Deflector      | 1    | 69   | 63-3S3120 | Angle Clutch Housing    | 1    |
| 30   | 63-7Q2007   | O Ring                 | 1    | 70   | 63-6S2010 | Needle Pin              | 3    |
| 31   | 63-6S2020   | Valve Plate            | 1    | 71   | 63-3S3101 | Regulation Washer       | 1    |
| 32   | 63-6S2009   | Operating Rod          | 1    | 72   | 63-3S3002 | Torque Ring             | 1    |
| 33   | 63-6N2101   | Cone Spring            | 1    | 75   | 63-5A3219 | Torque Cover            | 1    |
| 34   | 63-6S2031   | Screw                  | 1    | 76   | 63-6N3102 | Spring                  | 1    |
| 35   | 63-7S2113   | Screw                  | 1    | 77   | 63-7S2111 | Screw                   | 1    |
| 36   | 63-6N2133   | Spring                 | 1    | 78   | 63-7S2102 | Ball                    | 2    |
| 37   | 63-2S2021   | Valve Pin              | 1    | 79   | 63-7S2111 | Screw                   | 1    |
| 38   | 63-7Q2003   | O Ring                 | 1    | 80   | 63-5L3008 | Soft Cover (Black)      | 1    |
| 39   | 63-6S2031-1 | Screw                  | 1    | 81   | 63-5S2020 | Housing Set             | 1    |
| 40   | 63-7S2113   | Screw                  | 1    | 82   | 63-6S2103 | Angle Lock Nut          | 1    |
| 41   | 63-7Q6100   | O Ring                 | 1    | 83   | 63-5C2008 | Angle Head Assembly     | 1    |
| 42   | 63-7S2109   | Ball                   | 1    | 83-1 | 63-6N5112 | Spring                  | 1    |
| 43   | 63-6N2105   | Cone Spring            | 1    | 84   | 63-5N3003 | Suspension Ring         | 1    |