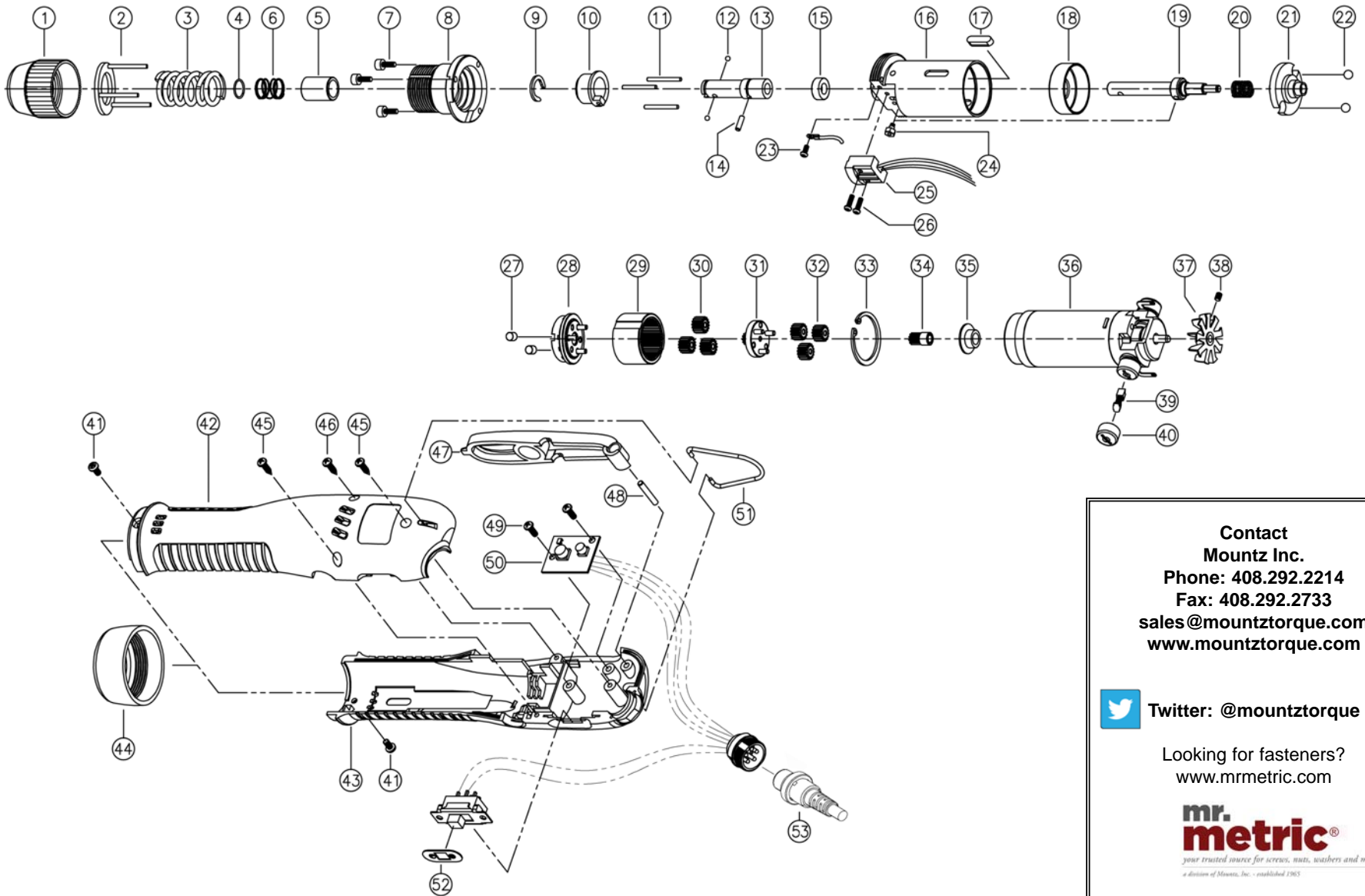


# K250P-A ESD, K350P-A ESD & K450P-A ESD Models (1/4 F/Hex)

Rev 3.6 3/27/2014



**Contact  
Mountz Inc.**  
Phone: 408.292.2214  
Fax: 408.292.2733  
sales@mountztorque.com  
www.mountztorque.com

 **Twitter: @mountztorque**

Looking for fasteners?  
www.mrmetric.com

**mr.  
metric**  
your trusted source for screws, nuts, washers and more  
a division of Mountz, Inc. • established 1965



# K250P-A ESD, K350P-A ESD & K450P-A ESD Models (1/4 F/Hex)

Rev 3.6 3/27/2014

No.	Part Number	Description	Qty.	Ref	No.	Part Number	Description	Qty.	Ref
1	14-PKK1801	ADJUSTER	1		35	14-PKK1820	WASHER	1	
2	14-508130	TORQUE SPRING HOLDER ASSY	1		36	14-520600	MOTOR ASSY	1	
3	14-5000137	TORQUE SPRING (SILVER 2.3)	1	K250P-A,	37	14-520150	FAN	1	
	14-520230	TORQUE SPRING (SILVER 2.5)	1	K350P-A & K450P-A	38	14-510480	SET SCREW	1	
	14-520235	TORQUE SPRING (BRONZE)	1	K250P-A & K350P-A	39	14-510650	CARBON BRUSH PACK (2PCS)	2	
	14-520220	TORQUE SPRING (GOLD)	1	K450P-A	40	14-510660	BRUSH CAP	2	
4	14-500111	BIT SOCKET RING	1		41	14-520480	SCREW	2	
5	14-520011	BIT COLLAR	1		42	14-520172	UPPER HOUSING (FOR ESD MODELS)	1	
6	14-520621	COLLAR SPRING	1		43	14-520182	LOWER HOUSING (FOR ESD MODELS)	1	
7	14-PSW2204	WRENCH BOLT (M,HEX,M2.5x8L)	3		44	14-520161	HOUSING NUT	1	
8	14-PKK1131	TOP COVER ASS'Y	1		45	14-502302	SCREW (TORX 3x12 L)	2	
9	14-PSK1954	C-RING (5103-37)	1		46	14-PSW2703	SCREW (T,TORX, 3x20L)	1	
10	14-3000031	SLEEVE ASS'Y K-Series v3	1		47	14-5000019	ATTACHMENT (FOR ESD MODELS)	1	
11	14-PSK1327	NEEDLE PIN	3		48	14-510280	LEVER PIN	1	
12	14-PAL1929	STEEL BALL (for 1/4 F/Hex Dr Models)	2		49	14-520476	SCREW	2	
13	14-PSK1401	BIT SOCKET A (for 1/4 F/Hex Dr)	1		50	14-3000113	CONTROL SET [K PUSH]	1	
14	14-PAL1231	GEAR HOLDER PIN	1		51	14-PEK1803	HOOK	1	
15	14-PSK1347	SPACER	1		52	14-QKK0420	SWITCH COVER LABEL	1	
16	14-PKK1108	GEAR CASE ASSY (PUSH-to-START)	1		53	14-PELZ932	CABLE 6PIN (3M,STANDARD)	1	
17	14-PKK1911	KEY	1						
18	14-PKK1319	SLIDE RING	1						
19	14-520125	SHAFT ASSY (PUSH-to-START)	1						
20	14-PSK1963	SPRING (PUSH-to-START)	1						
21	14-PKK1305	SHAFT (BALL HOLDING TYPE)	1						
22	14-PAL1935	STELL BALL (5.56)	2						
23	14-PSW2205	SCREW (M,PHILLIPS,M2.3x5L)	1						
24	14-PSK1113	MAGNET HOLDER ASSY	1						
25	14-3000039	SENSOR ASSEMBLY 3K(P)	1						
26	14-PSW2211	SCREW	2						
27	14-510300	ROLLER (4.5x4.3L)	2						
28	14-PKK1105	CLUTCH ASSY	1	K250P-A					
	14-PKK1106	CLUTCH ASSY	1	K350P-A & K450P-A					
29	14-520320	RING GEAR	1						
30	14-520350	IDLE GEAR (13T)	3	K250P-A					
	14-520330	IDLE GEAR (16T)	3	K350P-A & K450P-A					
31	14-PKK1103	1ST GEAR HOLDER ASSY B	1	K250P-A					
	14-PKK1102	1ST GEAR HOLDER ASS'Y	1	K350P-A					
	14-PKK1112	1ST GEAR HOLDER ASS'Y C	1	K450P-A					
32	14-520350	IDLE GEAR (13T)	3	K250P-A & K350P-A					
	14-520330	IDLE GEAR (16T)	3	K450P-A					
33	14-PKK1902	SNAP RING (R28)	1						
34	14-520390	PINION GEAR	1	K250P-A & K350P-A					
	14-PKK1236	PINION GEAR B	1	K450P-A					

**Contact**  
**Mountz Inc.**  
**Phone: 408.292.2214**  
**Fax: 408.292.2733**  
**sales@mountztorque.com**  
**www.mountztorque.com**

 **Twitter: @mountztorque**

Looking for fasteners?  
[www.mrmetric.com](http://www.mrmetric.com)

**mr. metric®**  
your trusted source for screws, nuts, washers and more  
a division of Minusa, Inc. - established 1965