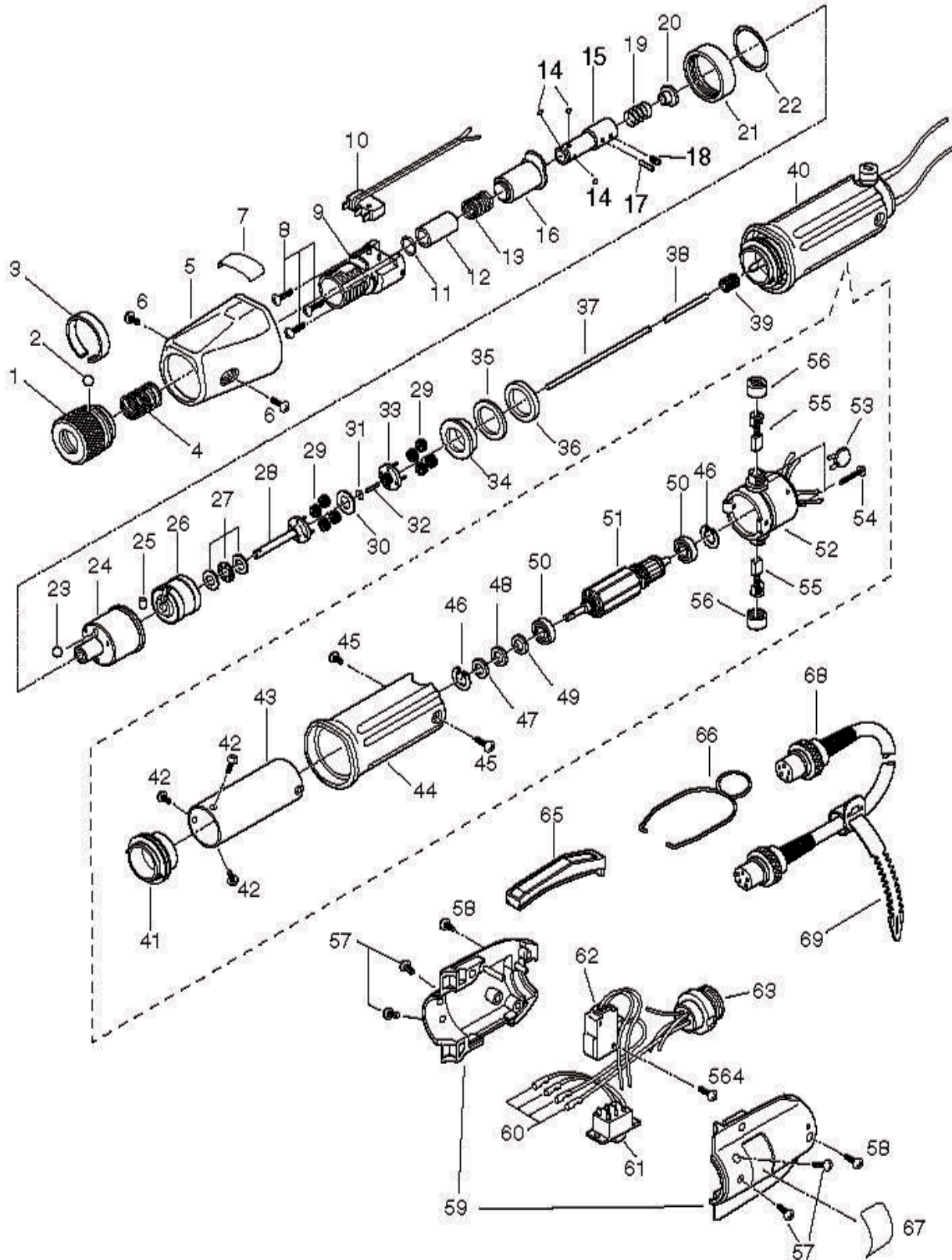


CL6500PS Parts List

Rev 2.5 2/3/2014



CL6500PS Parts List

No.	Part Number	Description	Qty.
	41-CL65PSX-TM	Transmission Assy 1-38 (W/O10;34-37) for CL-6500PS	
	41-CL65-NT	Torque Adjusting Nut Assembly 1 - 3	
1	41-CL65-0010	Torque Adjusting Nut	
2	220058	Steel Ball 3.0mm	
3	41-CL65-0030	Knotting Ball Band	
4	41-CL65-0040	Torque Adjusting Spring (Yellow)	
5	41-CL65-0050	Clutch Cover	
6	220208	Phil Pan Head Screw 3x5	
7	41-CL65-0070	Mark Label	
8	220218	Phil Pan Head Screw 2.6x8	
9	41-CL65-0090	Torque Adjusting Bolt	
10	41-CL4-0230	Limit Switch	
	41-CL65PSX-JS	Joint Shaft Assembly 11 - 15	
11	41-CL65-0110	Collar Stopper	
12	41-CL65X-0120	Joint Shaft Collar	
13	41-CL65-0130	Collar Spring	
14	220054	Steel Ball 2.0mm	
15	41-CL65PSX-0160	Joint Shaft HEX	
16	41-CL65-0160	Clutch Supporter	
17	41-DL10-0180	Joint Shaft Lock Pin 2x11.8	
18	220100	Skt Set Cup Pt. Screw 3x3	
19	41-CL65PS-0190	Intermediary Spring	
20	41-CL65PS-0200	Switch Intermediary	
21	41-CL65-0190	Gear Case Set Ring	
22	41-CL65-0200	O-Ring	
	41-CL65PS-GR	Gear Assembly 23 - 33;38	
23	220068	Steel Ball 5.5mm	
24	41-CL65PS-0240	Gear Case	
25	41-CL65-0230	Cam Roller 5x7	
26	41-CL65PS-0260	Internal Gear	
27	41-CL65-0250	Thrust Bearing 6x12	
28	41-CL65PS-0270	Lower Planet Cage	
29	41-CL65PS-0280	Planet Gear	
30	41-CL7-0680	Gear Plate B	
31	41-CL4-0290	Thrust Washer	
32	41-CL65PS-0300	Center Pin A	
33	41-CL65PS-0310	Upper Planet Cage	
34	41-CL65PS-0320	Gear Support	
35	41-CL65PS-0671	Washer 0.1	
36	41-CL65PS-0370	Bearing For Gear Support	
37	41-CL65PS-0471	Center Pin B for CL-6500PS	
39	41-CL65PS-0330	Pinion Gear	
40	41-CL65PS-0340	Motor for CL-6500PS	
41	41-CL65PS-0360	Motor Front Cover	
42	220202	Phil Pan Head Screw 3x4	
43	41-CL65PS-Magnet	Magnet Case for CL-6500PS	
44	41-CL65-0440	Motor Case for CL-6500PS	
45	220201	Phil Pan Head Screw 3x4	
46	41-CL65-0370	Ring Stopper S	
47	41-CL65-0380	Wave Washer	
48	41-CL65-0390	Rotor Adjusting Washer 0.1	
49	41-CL65-0400	Rotor Adjusting Washer 0.2	
50	41-CL65-0410	Motor Bearing	
51	41-CL65PS-0420	Rotor for CL-6500PS	
	41-CL65-3470	Motor End Cover Assembly 46.50.52-56	
52	41-CL65-0470	Motor End Cover	
53	41-CL4-0441	Capacitor	



CL6500PS Parts List

No.	Part Number	Description	Qty.
54	220212	Sl. Cheese Head Screw	1
55	41CL65-0490	Carbon Brush	1
56	41-CL65-0500	Carbon Brush Cap	2
57	220207	Phil Pan Head Screw 3x8	4
	41-CL65PS-SW	Switch Assembly 58-67	1
58	220217	Phil Pan Head Screw 2.6x5	2
59	41-CL65-0530	Switch Cover A & B	1
60	41-CL4-0550	Terminal Holder	1
61	41-CL65-0590	For/Rev Switch	1
62	41-CL65PS-0610	Starting Switch	1
63	41-CL4-0580	5-Pin Connector	1
64	220302	Set Screw 3x18	1
65	41-CL65PS-0641	Side Cover	1
66	41-CL65-0651	Hanger	1
67	41-CL65PS-8060	Mark Label B	1
68	41-CL65-0660	5-Core Cord W/Connectors In Both Ends	1
69	41-CL65-0670	Free-Up Belt	1

Mountz Calibration & Repair Services

Mountz Inc. features an experienced calibration and repair staff. Our trained technicians can calibrate and repair most any tool. Mountz provides rapid service with quality that you can trust as we offer two state-of-the-art calibration lab and repair facilities that can calibrate up to 20,000 lbf.ft.

With over 45 years of experience, Mountz's in-depth knowledge of torque is reflected in our tool's craftsmanship and our ability to provide solutions to both common and uncommon torque applications. We perform calibrations in accordance with ANSI/NCSL-Z540. Mountz is dedicated solely to the manufacturing, marketing and servicing of high quality torque tools.

Mountz is an ISO 9001 certified and ISO 17025 accredited company.

Testing Power Tools:

1. Application Method: Use a torque analyzer in "Peak Mode" with a rotary transducer between the power tool and the actual application. This is the best way to test since you are using the actual joint as the test station. You will see the actual torque applied to the fastener. **Caution:** Variances in tool performance may occur do to the addition of the rotary transducer.
2. Simulated Method: Always use a quality joint rate simulator (run down adapter) with a torque analyzer when testing power tools in a simulated application. Use Joint rate and Breakaway methods to obtain most accurate torque readings in a simulated rundown.

Mountz Service Locations

Eastern Service Center

19051 Underwood Rd.

Foley, AL 36535

Phone: (251) 943-4125

Fax: (251) 943-4979

Western Service Center

1080 N.11th Street

San Jose, CA 95112

Phone: (408) 292-2214

Fax: (408) 292-2733

www.mountztorque.com
sales@mountztorque.com



Twitter: @mountztorque

Download a "Service Form" and include a copy when you send the tools in to be serviced.

Looking for fasteners?
www.mrmetric.com

mr. metric
your trusted source for screws, nuts, washers and
a division of Mountz, Inc. - established 1965