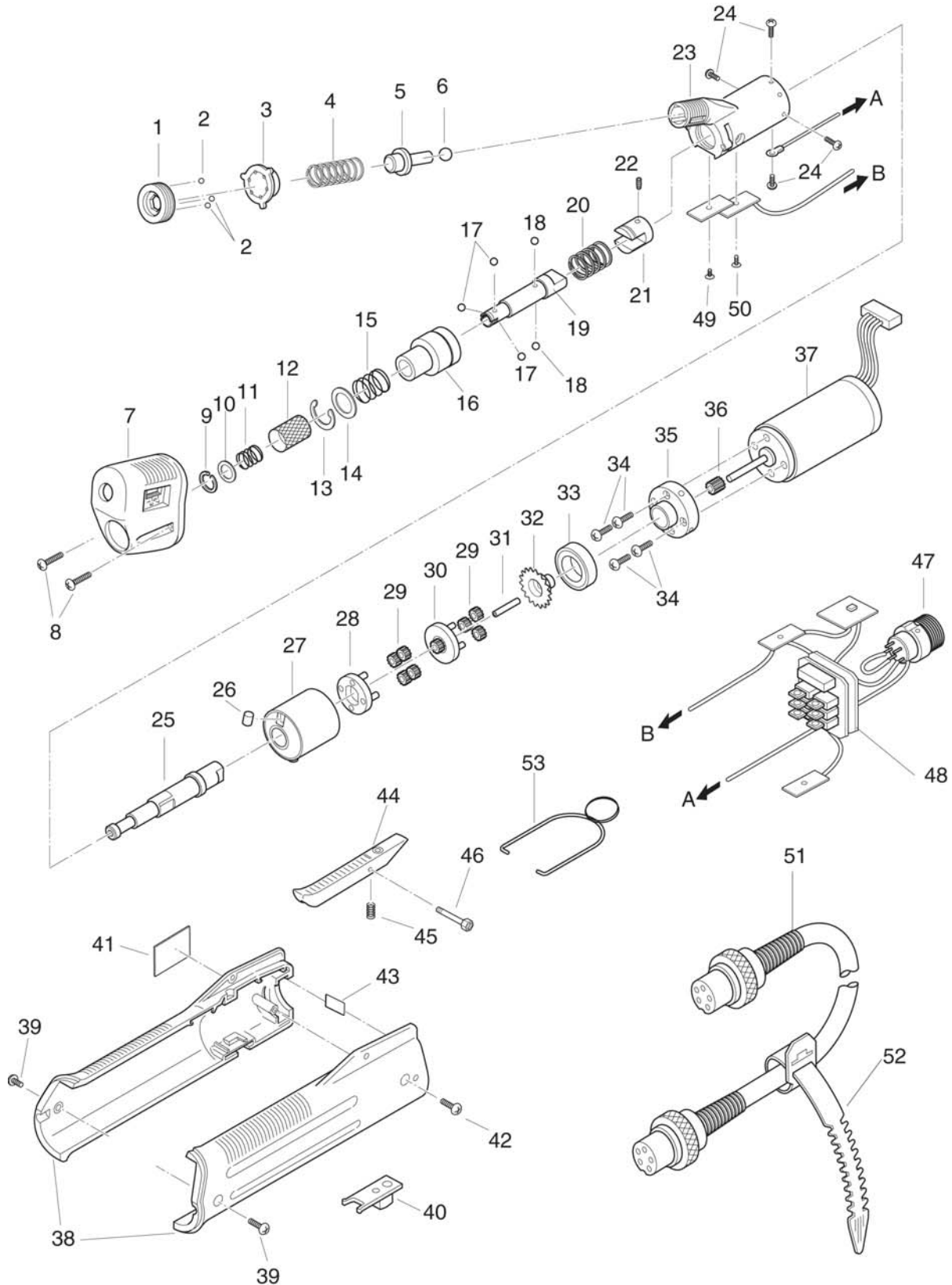


# BL-7000

Rev 1.3 (8/5/2013)





# BL-7000

No.	Part Number	Description	Qty.
1	41-BL65-0010	Torque Adjusting Nut	1
2	41-BALL-015	Steel Ball 1.5mm	3
3	41-BL65-0020	Torque Adjusting Spring Holder	1
4	41-BL7-0050	Torque Adjusting Spring	1
5	41-BL65-0060	Clutch Panel	1
6	41-BALL-055	Steel Ball 5.5mm	1
7	41-BL65-0221	Clutch Cover	1
8	41-SPP30X070N	Set Screw M3X8	2
9	41-CL65-0110	Collar Stopper	1
10	41-BL65-0130	Washer	1
11	41-BL65-0120	Collar Spring	1
12	41-BL65-0110	Joint Shaft Collar	1
13	41-BL65-0140	C-Ring	1
14	41-BL65-0730	Washer	1
15	41-BL65-0170	Push Spring	1
16	41-BL65-3210	Joint Shaft Cover Set	1
17	41-BALL-025	Steel Ball 2.5mm (H5 HIOS Dr.)	3
	41-BALL-02	Steel Ball 2.0mm (1/4 F/Hex Dr.)	3
18	41-BALL-0277	Steel Ball 2.777/64	2
19	41-BL65-0100	Joint Shaft for (H5 HIOS Dr.)	1
	41-BL65X-0100	Joint Shaft for (1/4 F/Hex Dr.)	1
20	41-BL65-0160	Joint Shaft Cover Spring	1
21	41-BL65-0200	Joint	1
22	41-SH26X030	Set Screw M2.6X3	1
23	41-BL65-0232	Gear Case	1
24	41-MSPF26060NIGP	Set Screw 2.6x6	4
25	41-BL65-0150	Lower Planet Shaft	1
26	41-CL65-0230	Cam Roller 5x7	1
27	41-BL65-3320	Internal Gear (Single/Magnet)	1
28	41-BL65-0340	Lower Floor	1
29	41-BL65-0331	Planet Gear	7
30	41-BL65-0360	Upper Planet Cage	1
31	41-F9-0260	Center Pin	1
32	41BL7-0040	Cup Ring	1
33	41-BL65-0380	Bearing	1
34	41-SPP30X070N	Set Screw M3X8	4
35	41-BL65-0401	Motor Front Panel	1
36	41-BL7-0392	Pinion Gear	1
37	41-BL7A-0440	Motor	1
38	41-BL65-0462	Body Case A&B	1
39	41-SPP30X070N	Set Screw M3X8	2
40	41-BL4-3360ESD	FOR/REV Switch ESD	1
41	41-BL7-0070	Name Plate	1
42	41-BOHD5F35120NITP	Set Screw 3.5X12	1
43	41-BL65-0471	Connector Cover	1
44	41-BL65-3490	Switch Lever	1
45	41-CL65-0610	Switch Lever Spring	1
46	41-BL4-0520	Switch Lever Plunger	1
47	41-CL4-0580	5-Pin Connector	1
48	41-BL7-CC1	Circuit Assembly	1
49	41-SPC20X025	Set Screw for BL-7000 2x2.5	1
50	41-SPC20X040	Set Screw 2.0x4 ( STP20X040)	1
51	41-CL65-0660	5-Core Cord W/Connectors In Both Ends	1
52	41-CL65-0670	Free-Up Belt	1
53	41-CL65-0651	Hanger	1