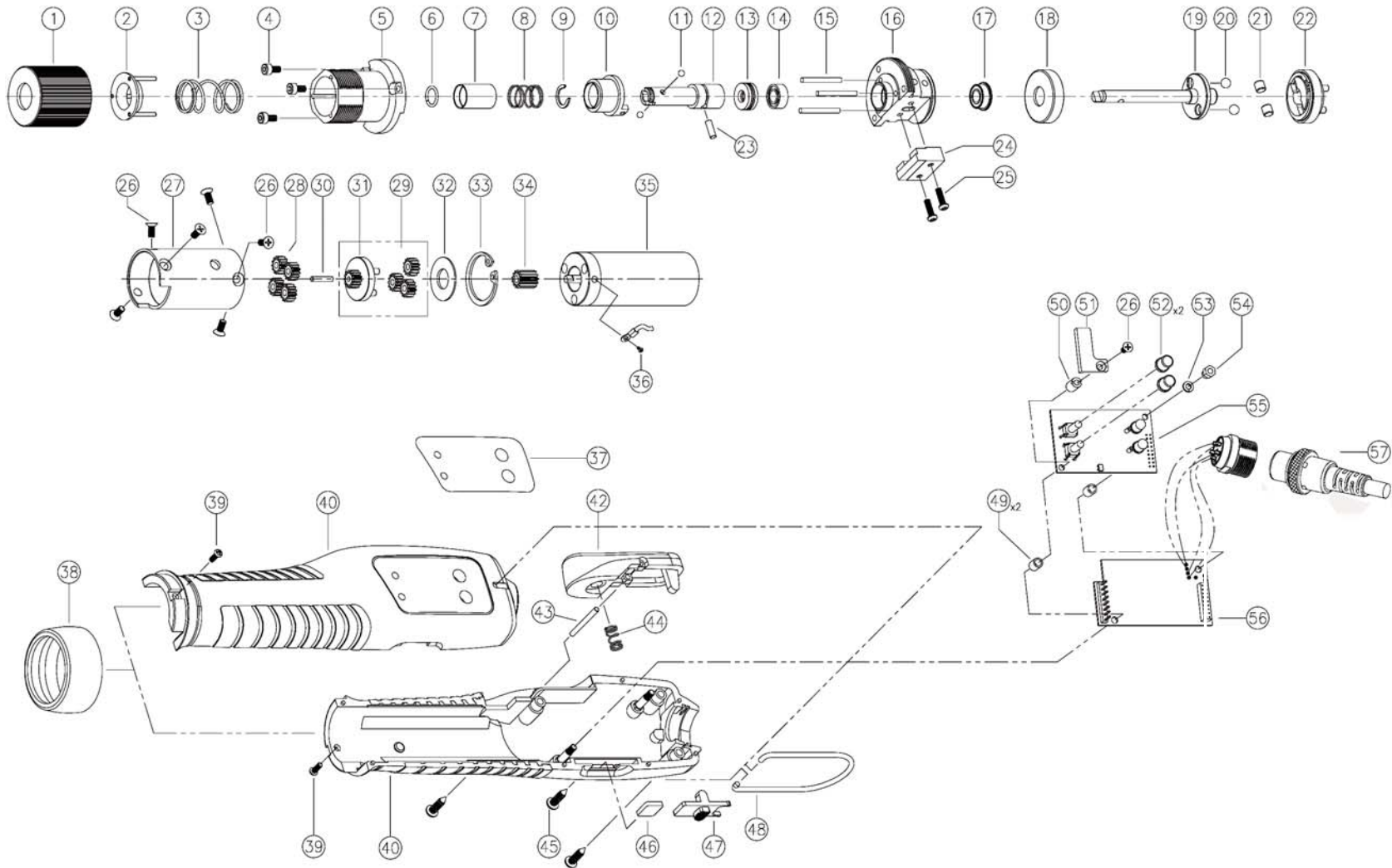


BF120 & BF120 Plus ESD Brushless Driver (1/4 F/Hex)

Rev 4.1 5/20/2014





BF120 & BF120 Plus ESD Brushless Driver (1/4 F/Hex)

Rev 4.1 5/20/2014

No.	Part Number	Description	Qty.	Notes	No.	Part Number	Description	Qty.
1	14-PFE1801	ADJUSTER	1		35	14-PFF4005A	MOTOR SET	1
2	14-PFE1132	TORQUE SPRING HOLDER ASS'Y	1		36	14-PSW2205	SCREW	1
3	14-PFE1816	TORQUE SPRING (BLACK)	1		37	14-5000664	WINDOW LABEL for BF	1
	14-PFE1814	TORQUE SPRING (GOLD)	1			14-QFF0407A	WINDOW LABEL for BF PLUS	1
4	14-PSW2201	WRENCH BOLT	3		38	14-PFF1802	HOUSING NUT	1
5	14-PFE1131	TOP COVER ASSY	1		39	14-PSW2202	SCREW	2
6	14-PFE1973	BIT SOCKET RING	1		40	14-3000913	BF HOUSING SET	1
7	14-PFE1410	BIT COLLAR	1		42	14-630725	LEVER ASSY	1
8	14-PFE1964	COLLAR SPRING	1		43	14-PSK1327	NEEDLE PIN	1
9	14-PFE1955	C-RING	1		44	14-510250	LEVER SPRING	1
10	14-3000030	SLEEVE ASSY	1		45	14-PSW2602	SCREW	3
11	220052	STEEL BALL	2		46	14-PFF1830	SWITCH LOCK	1
12	14-PFE1412	BIT SOCKET A	1		47	14-PFF1130	SWITCH COVER ASSY	1
13	14-PFE1920	THRUST BEARING	1		48	14-500680	HOOK	1
14	14-PFE1907	BALL BEARING	1		49	14-PFF1842A	PCB SUPPORT	2
15	14-PFE1327	NEEDLE PIN	3		50	14-PFF1824A	NUT(SLOT)	1
16	14-PFE1118	BEARNG COVER ASSY (LEVER)	1		51	14-PFF1719	CONNECTOR LOCK COVER	1
17	14-PFE1908	BALL BEARING (MF105)	1		52	14-PFF1723	BUTTON CAP	2
18	14-PFE1319	SLIDE RING	1		53	14-PSW2803	SPRING WASHER	1
19	14-PFE1302	SHAFT (LEVER)	1		54	14-PFF1824	NUT	1
20	14-PAL1932	STEEL BALL	2		55	14-3000447	CONTROL PCB SET	1
21	14-PFE1910	ROLLER	2		56	14-PFFZ537A	AMP PCB SET V 1.03.02 FOR AS*	1
22	14-PFE1106	CLUTCH ASSY B	1		57	14-PELZ932A	CABLE 6PIN (3M, STANDARD)	1
23	14-PFE1413	HOLDER PIN	1					
24	14-PFFZ511A	SENSOR ASSY [LEVER]	1					
25	14-PSW2211	SCREW (M PHILIPS M2.3x8L)	2					
26	14-PSW2207	SCREW (M PHILIPS M2.6x6L)	7					
27	14-PFE1201A	GEAR CASE	1					
28	14-PFE1212	2ND IDLE GEAR B (14T)	4					
29	14-PFE1217	1ST IDLE GEAR B (13T)	3					
30	14-PFE1915	CENTER PIN	1					
31	14-PFE1103	1ST GEAR HOLDER ASSY B	1					
32	14-PFE1947	WASHER	1					
33	14-PFE1903	SNAP RING (R21)	1					
34	14-PFE1236	PINION GEAR B	1					

* Please include model name BF120 or BF120 Plus when ordering