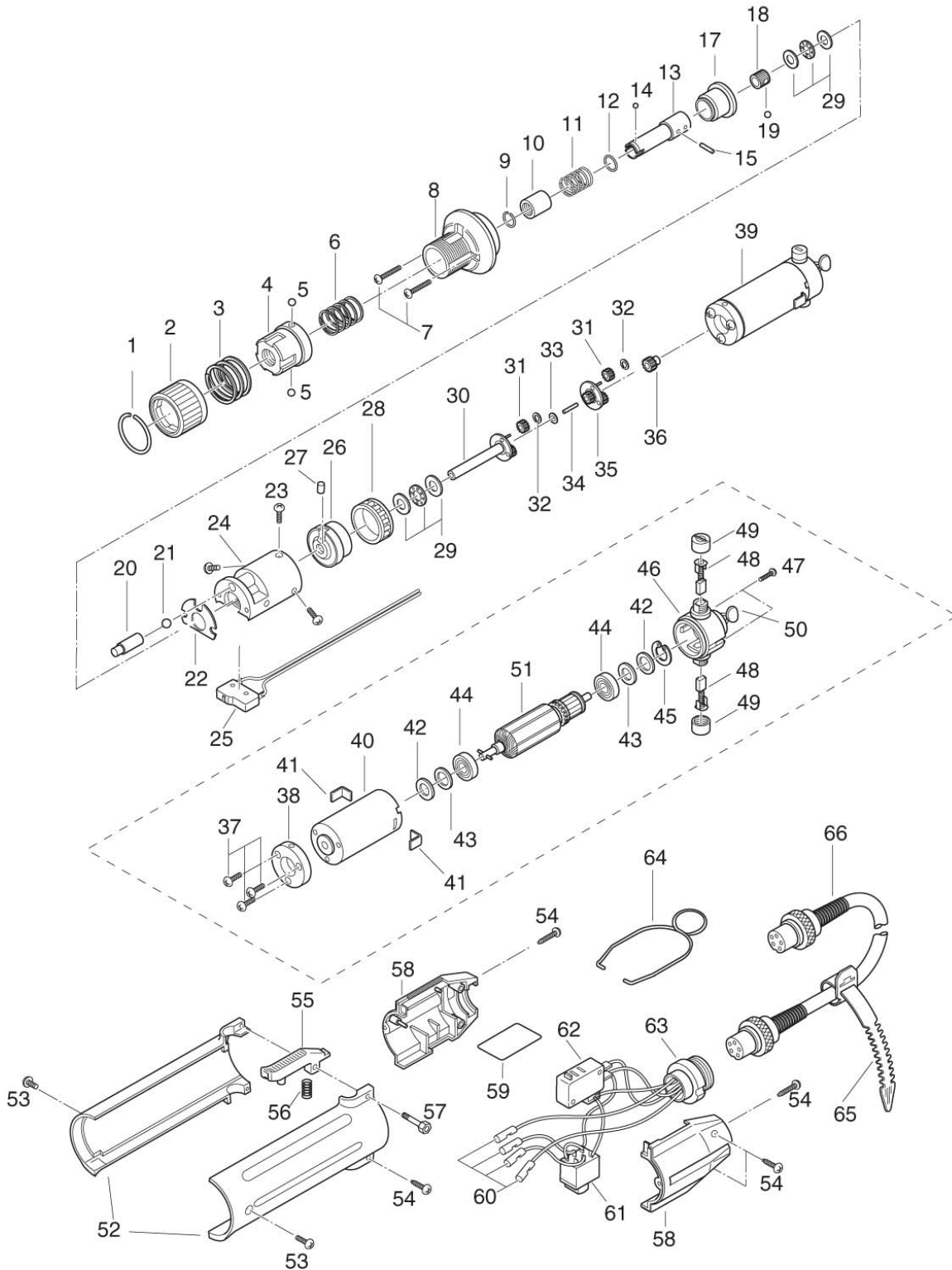


# CL3000 Parts Lists

Version 1.1





# CL3000 Parts Lists

No.	Part Number	Description	No.	Part Number	Description
	Transmission Assembly 1 - 36 (W/O 25)	41-CL3-TM	36	Pinion Gear	41-CL4-0320
	Torque Adjusting Nut Assembly 1 - 5	41-CL4-NT	37	Phil Pan Head Screw 2.6x20 (x3)	220215
1	Nut Cover Stopper	41-CL4-0010	38	Motor Front Panel	41-CL4-0350
2	Nut Cover	41-CL4-0020	39	Motor (Short Size)	41-CL3-0360
3	Nut Cover Spring	41-CL4-0030	40	Magnet Case (CL-3000)	41-CL3000MA
4	Torque Adjusting Nut	41-CL4-0040	42	Wave Washer	41-CL4-0370
5	Steel Ball 3.0mm	220058	43	Rotor Adjusting Washer 0.1	41-CL4-0380-1
6	Torque Adjusting Spring 1.2mm (Blue)	41-CL3-0060		Rotor Adjusting Washer 0.2	41-CL4-0380-2
	Torque Adjusting Spring 1.0mm (Gold)	41-CL3-0060-1		Motor End Cover Assembly 44 - 50	41-CL3-3400
7	Phil Pan Head Screw 2.6x10 (x2)	220204	44	Motor Bearing	41-CL4-0450
8	Torque Adjusting Bolt	41-CL3-0080	45	Stop Ring	41-CL4-0390
9	Collar Stopper	41-CL4-0090	46	Motor End Cover	41-CL3-0400
10	Joint Shaft Collar	41-CL4-0100	47	Self Tap JIS Screw 1.7x10 (x2)	220200
11	Collar Spring	41-CL4-0110	48	Carbon Brush ( PAIR )	41-A45-0420
12	Support Washer for Spring	41-CL3-0620	49	Carbon Brush Cap	41-A45-0430
13	Joint Shaft	41-CL3-0130	50	Capacitor	41-CL4-0441
14	Steel Ball 2.0mm	220054	51	Rotor	41-CL3-0460
15	Lock Pin 2x7	SR20X070	52	Body Case A & B (Off White)	41-CL3-0471
16	Skt. Set Cup Pt. Screw 3x3	220100	53	Phil Pan Head Screw 3x20 (x2)	220206
17	Clutch Supporter	41-CL3-0160	54	Self Tap Screw 2.6x12 (x2)	220300
18	Slide Ball Bearing	41-CL3-0630	55	CL4-0500□ Switch Lever	41-CL4-0501
19	Steel Ball 1/16 - .062 (x39)	220001	56	Switch Lever Spring	41-CL4-0510
	Gear Assembly 20 - 36 (W/O 25)	41CL3-GR	57	Switch Lever Plunger	41-CL4-0521
20	Clutch Ball Rod	41CL4-0180		Switch Assembly 23,58 - 64	41-CL3-SW1
21	Steel Ball 5.0mm	220066	58	Switch Cover A & B (Off White)	41-CL3-0531
22	Gear Case Plate	41CL4-0200	59	Name Plate	41-CL3-0540
23	Phil Pan Head Screw 2.6x5 (x3)	220217	60	Terminal Holder	41-CL4-0550
24	Gear Case	41-CL3-0210	61	For/Rev Switch	41-CL4-0560
25	Limit Switch	41-CL4-0230	62	Starting Switch	41-CL4-0570
26	Internal Gear	41-CL3-0240	63	5-Pin Connector	41-CL4-0580
27	Cam Roller	41-CL4-0250	64	CL4-0592□ Hanger CL4-0590/-0592□ Hanger	41-CL4-0594
28	Needle Ball Bearing	41-CL3-0640	65	Free-Up Belt	41-CL4-0600
29	Thrust Bearing 5x11	41-CL4-0170	66	5-Core Cord W/Connectors In Both Ends	41CL4-0611
	Lower Planet Cage Assembly 30 - 32	41-CL4-3260			
30	Lower Planet Cage	41-CL4-0260			
31	Planet Gear	41-CL4-0270			
32	E-Ring	41-CL4-0280			
33	Thrust Washer	41-CL4-0290			
34	Center Pin	41-CL4-0300			
	Upper Planet Cage Assembly 31,32,35	41-CL4-3310			
35	Upper Planet Cage	41-CL4-0310			