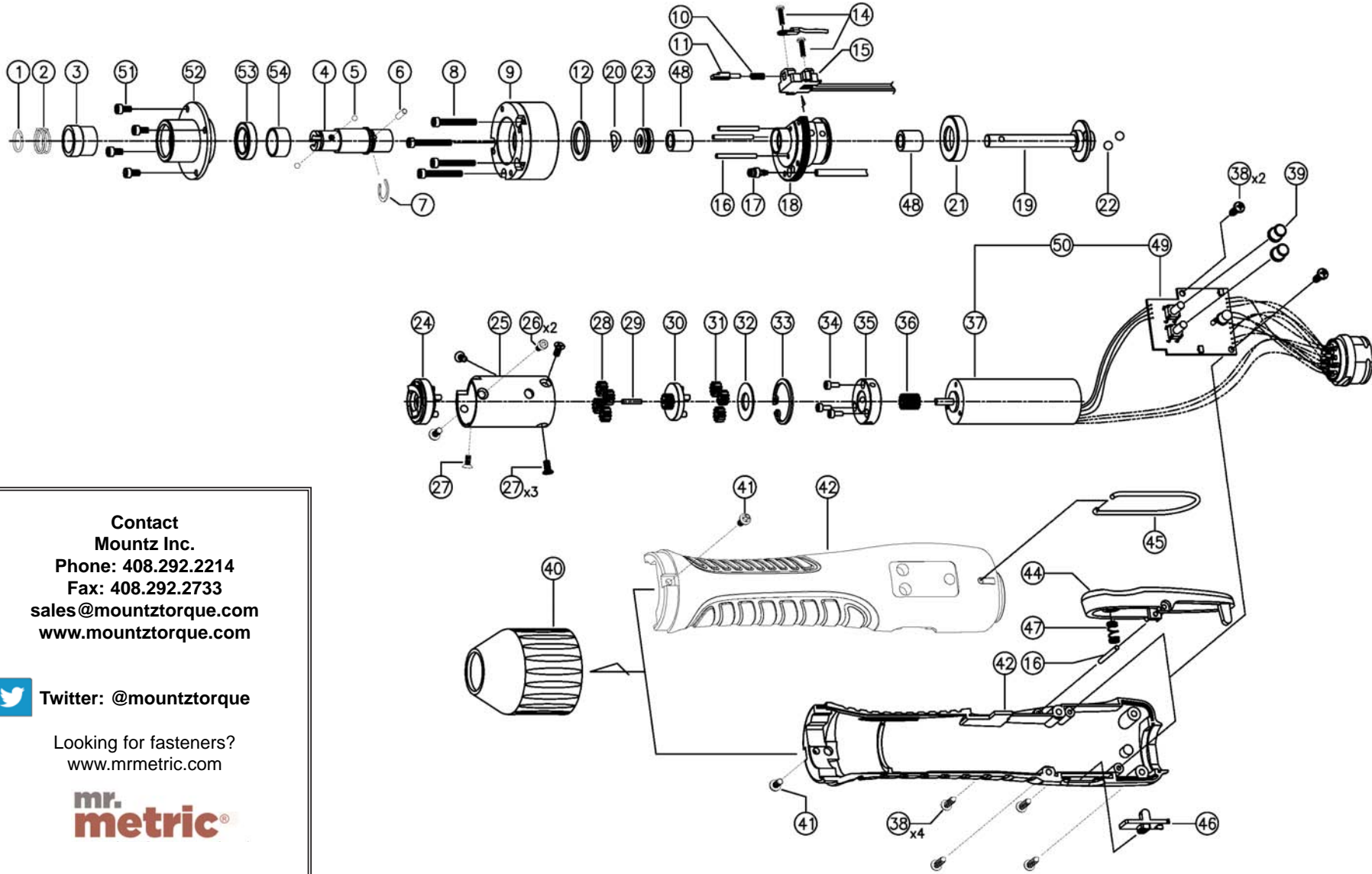


HD220-A Brushless Driver (1/4 F/Hex)

Rev 1.2 1/28/2015



**Contact
Mountz Inc.**
Phone: 408.292.2214
Fax: 408.292.2733
sales@mountztorque.com
www.mountztorque.com

 Twitter: @mountztorque

Looking for fasteners?
www.mrmetric.com

**mr.
metric**



HD220-A Brushless Driver (1/4 F/Hex)

Rev 1.2 1/28/2015

No.	Part Number	Description	Qty.	No.	Part Number	Description	Qty.
1	14-500111	BIT SOCKET RING	1	37	14-5000418	BLDC MOTOR	1
2	14-5000063	COLLAR SPRING	1	38	14-PSW2602	SCREW	6
3	14-5001038	COLLAR A	1	39	14-5000070	BUTTON CAP	2
4	14-5001036	BIT SOCKET A	1	40	14-5001042	HOUSING NUT FOR HD220	1
5	14-PAL1928	STEEL BALL	2	41	14-5000072	SCREW	2
6	14-PAL1231	GEAR HOLDER PIN	1	42	14-3000914	HD HOUSING SET	1
7	14-PSK1954	C-RING	1	44	14-3000085	HD LEVER ASS'Y	1
8	14-5000145	WRENCH BOLT	4	45	14-500680	HOOK	1
9	14-3000168	CYLINDER ASS'Y FOR HD220,450	1	46	14-PFF1130	SWITCH COVER ASS'Y	1
10	14-5000064	LIMIT SPRING	1	47	14-510250	LEVER SPRING	1
11	14-3000076	SLIDE BAR ASS'Y	1	48	14-5000077	OILLESS BEARING	2
12	14-5000061	NEEDLE PIN SUPPORT	1	49	14-3000325	DRIVER PCB ASSY	1
14	14-PSW2211	SCREW	2	50	14-3000084	MOTOR SET	1
15	14-3000077	SENSOR ASSY (LEVER)	1	51	14-PSW2201	WRENCH BOLT	4
16	14-PSK1327	NEEDLE PIN	4	52	14-5001035	6701 BEARING HOLDER HD220,450	1
17	14-3000078	CYLINDER FITTING ASS'Y	1	53	14-5001021	BALL BEARING	1
18	14-3000079	BEA. COVER ASS'Y (LEVER)	1	54	14-5000911	6701 BEARING SPACER	1
19	14-5000066	SHAFT (LEVER)	1		14-3000238	CABLE - HD-SERIES DRIVERS	1
20	14-5000887	BEND WASHER	1				
21	14-PFF1319	SLIDE RING	1				
22	14-PAL1932	STEEL BALL	2				
23	14-PSK1921	THRUST BEARING	1				
24	14-3000871	CLUTCH ASS'Y (HD220 V2)	1				
25	14-5000491	GEAR CASE	1				
26	14-PSW2201	WRENCH BOLT	2				
27	14-5000665	SCREW	4				
28	14-PFE1212	2ND IDLE GEAR	4				
29	14-PFE1915	CENTER PIN	1				
30	14-PFE1103	1ST GEAR HOLDER ASS'Y	1				
31	14-5000134	1ST IDLE GEAR	3				
32	14-PFE1947	WASHER	1				
33	14-PFE1903	SNAP RING	1				
34	14-PSW2216	WRENCH BOLT	3				
35	14-PFF1839A	MOUNTING FLANGE	1				
36	14-PFE1236	PINION GEAR B	1				