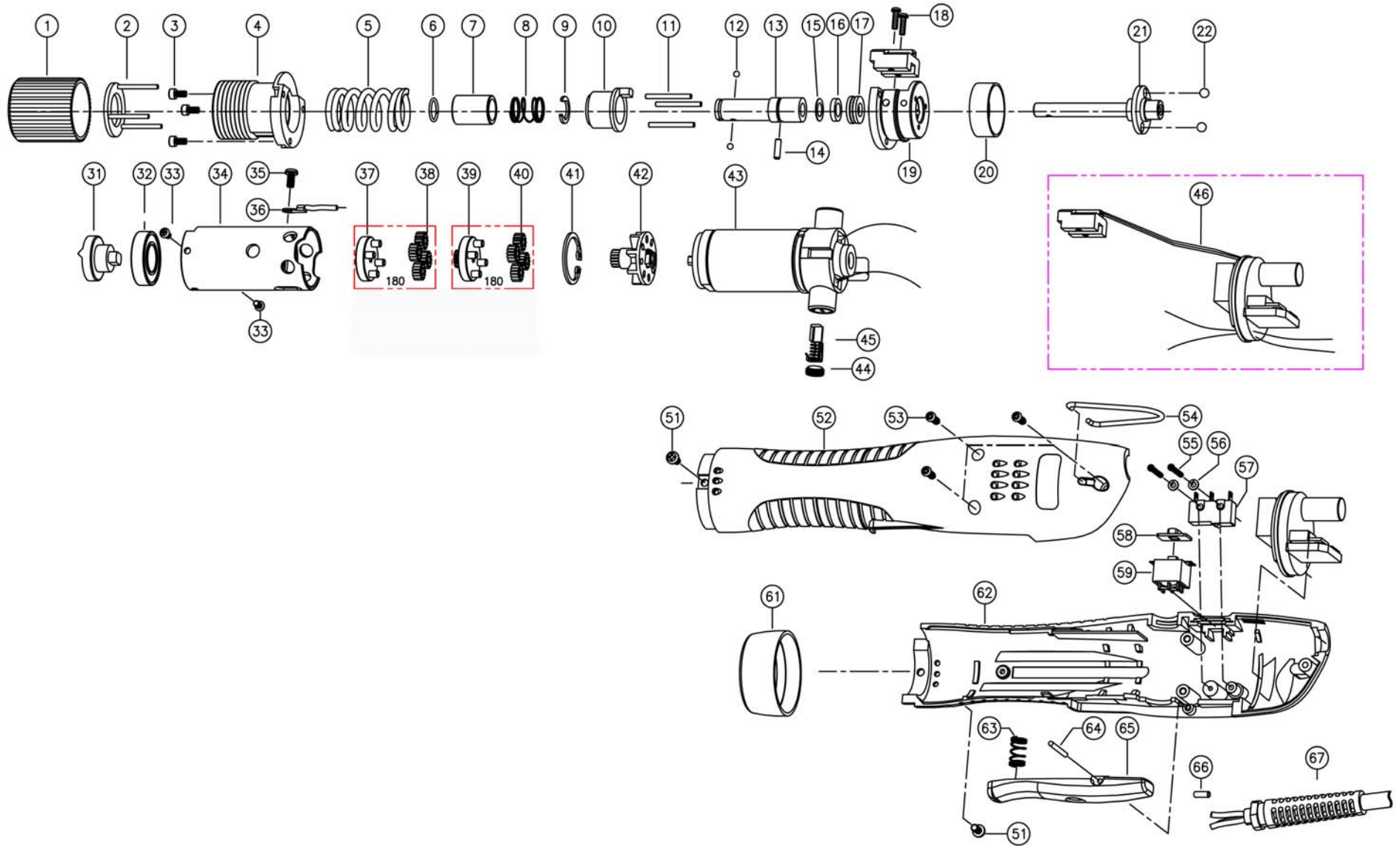


E180-A Lever Start Model (220V)

Rev 2.0 4/24/2013





E180-A Lever Start Model (220V)

Rev 2.0 4/24/2013

No.	Part Number	Description	Qty.	Note	No.	Part Number	Description	Qty.	Note
1	14-500205	Adjuster	1		36	14-QSM0323	Earth Wire	1	
2	14-508130	Torque Spring Holder Assy.	1		37	14-PSM1100	Gear Holder Ass'y	1	
3	14-PSW2201	Wrench Bolt M2.5x5L	3		38	14-PSS1211	2nd Idle Gear	4	
4	14-PSS1131	Top Cover Assy	1		39	14-PSS1102	1st Gear Holder Ass'y	1	
5	14-520230	Torque Spring - Silver	1		40	14-PSM1216	1st Idle Gear	4	
	14-520235	Torque Spring - Bronze	1		41	14-PAL1901	Snap Ring (R22)	1	
6	14-500111	Bit Socket Ring	1		42	14-PSM1135	Fan Gear Ass'y	1	
7	14-520011	Bit Collar	1		43	14-PSM4004	Motor Assembly 220V	1	
8	14-520621	Collar Spring	1		44	14-501831	BRUSH CAP	2	
9	14-PSK1954	C-Ring	1		45	14-PSM4100	Carbon Brush Ass'y	2	
10	14-3000122	Sleeve Ass'y	1		46	14-PSSZ522A	Control PCB Assembly (220V)	1	
11	14-PSK1327	Needle Pin	3		51	14-520480	Screw (M3X6L)	2	
12	14-PAL1928	Steel Ball (for 1/4 F/Hex Dr Models)	2		52	14-PSM1827	Upper Housing	1	
13	14-PSK1401	Bit Socket A	1		53	14-502302	Screw (Torx 3x12 L)	3	
14	14-PAL1231	Gear Holder Pin	1		54	14-500680	HOOK	1	
15	14-PAL1946	Bend Washer	1		55	14-PSW2601	Screw [T Philips 2x16L]	2	
16	14-PSK1347	Spacer	1		56	14-PSW2801	Washer [Spring M2.3]	2	
17	14-PSK1921	Thrust Bearing	1		57	14-PELS301	Micro Switch	1	
18	14-PSW2901	Screw, (M Slot M2.3x10L)	2		58	14-PAL1130	Switch Cover Ass'y	1	
19	14-PSS1118	Bearing Cover Ass'y	1		59	14-PELS102	Slide Switch Ass'y	1	
20	14-PSS1319	Slide Ring	1		61	14-PSS1802	Housing Nut	1	
21	14-PSS1302	Shaft	1		62	14-PSM1828	Lower Housing	1	
22	14-PAL1932	Steel Ball 4mm	2		63	14-PSM1841	Lever Spring	1	
31	14-PSS1206	Clutch	1		64	14-PSK1327	Needle Pin	1	
32	14-PSM1906	Ball Bearing	1		65	14-PSM1835A	Lever	1	
33	14-PSW2202	Screw [M Philips M2.6x5L]	2		66	14-QSM0902	Sleeve	1	
34	14-PSM1201	Gear Case	1		67	14-PSS3015	Power Cord 220V	1	
35	14-PSW2310	Screw [M Philips M3x6L Washer]	1						