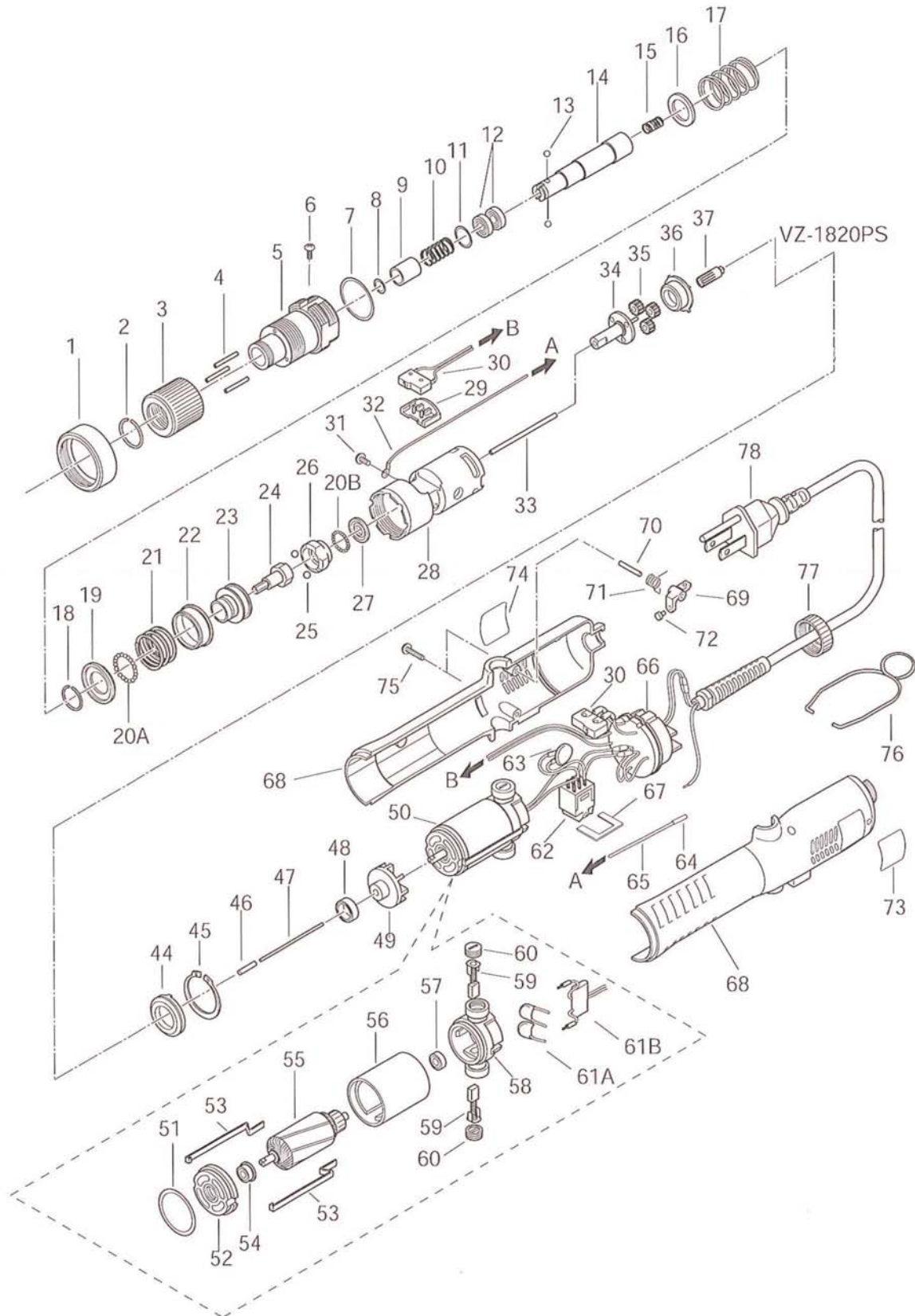


# VZ1820PS Parts List

Rev 2.1 7/30/2014





# VZ1820PS Parts List

No.	Part Number	Description	Qty.
1	41-VZ18-0010U	Front Ring	1
2	41-VZ18-0022	Nut Stopper Ring	1
3	41-VZ18-0030	Torque Adjusting Nut	1
4	41-VZ30-0041	Knotting Roller	3
5	41-VZ18-3050	Torque Adjusting Bolt	1
6	41-SPP30X025	Set Screw 3x2.5	1
7	41-M3-0260	O-Ring 18Ø	1
8	41-VZ18X-0070	Collar Stopper for VZ-Series (1/4" Hex Dr.)	1
9	41-VZ18X-0080	Joint Shaft Collar (1/4 Hex Dr.)	1
10	41-CL65-0130	Collar Spring	1
11	41-VZ18X-0130	Stopper Washer (Spring Stopper)	1
12	----	Bearing 15x10x4 (x2) (includes No. 5)	2
13	220054	Steel Ball 2.0Ø (x2)	2
14	41-VZ18X-0120	Joint Shaft (1/4 Hex Dr.)	1
15	41-VZ18PS-0591	Push Spring	1
16	41-VZ18-0150	Spring Holder	1
17	41-VZ18-0160	Torque Adjusting Spring (2.6Ø Silver)	1
	41-VZ18-3220	Clutch Panel Set (18-20A, 22-23)	1
18	41-VZ18-0170	Thrust Washer Set Ring	1
19	41-VZ18-0180	Thrust Washer	1
20A	220056	Steel Ball 2.5Ø (x22)	
20B	220054	Steel Ball 2.0Ø (x15)	
21	41-VZ30-0200	Clutch Panel Spring	1
22	41-VZ18-0210	Clutch Panel Cover	1
23	41-VZ18-0220	Clutch Panel	1
24	41-VZ18-0241	Cam	1
25	220064	Steel Ball 4.5Ø	2
26	41-VZ18-0262	Ball Guide	1
27	41-VZ18-0270	Thrust	1
28	41-VZ18-0280	Gear Case	1
29	41-VZ18-0290	Switch Protector	1
30	41-CL4-0230	Limit Switch	1
31	41-MSHW7F350553CTP	Set Screw 3.5x5.5	1
32	-----	Ground Connector (included in No. 77)	1
33	41-VZ18PS-0690	Center Pin (Push Rod A) 2x71.9	1
34	41-VZ18-0310	Lower Planet Cage	1
35	41-VZ18-0320	Planet Gear 6.33/1	3
36	41-VZ18-0330	Spacer	1
37	41-VZ18-0360	Pinion Gear 6.33/1	1
44	41-ACL20-0351	Grease Seal	1
45	41-VZ18-0350	OV-Ring	1
46	41-VZ18PS-0070U	Joint Pin	1
47	41-VZ18PS-0770	Push Rod	1
48	-----	Bearing for Fan (includes No. 49)	1
49	41-VZ18-3380	Fan	1
50	41-VZ18-0390-120	Motor Assembly (120V)	1
51	-----	-----	
52	41-VZ18-0420U	Front Cover	1
53	41-VZ18-0410	Motor Set Band	2
54	41-VZ18-0430	Ball Bearing	1
55	41-VZ18-0440U	Rotor	1
56	-----	Magnet Case	1
57	41-CL65-0410	Ball Bearing	1
58	41-VZ18-0470	End Cover	1
59	41-VZ18-0480	Carbon Brush	2
60	41-VZ18-0490	Carbon Brush Cap	2

# VZ1820PS Parts List

No.	Part Number	Description	Qty.
61	41-VZ18-0501	Condenser A	1
61A	41-VZ18-0511	Condenser B	1
	41-VZ18-3551K	Circuit Assembly (30, 62, 63, 66)	1
	41-VZ18-3521U	For/Rev Switch Assembly (62, 63)	1
62	-----	For/Rev Switch	1
63	-----	Noise Filter (Surge Absorber)	1
64	-----	Sleeve (includes No. 78)	1
65	-----	Earth Cord (includes No. 78)	1
66	-----	P.C.B. Assembly (includes Circuit Assy)	1
67	41-VZ18-0741U	Switch Plate	1
68	41-VZ18PS-0562U	Body Case A & B	1
69	41-VZ18PS-0570	Push Lever	1
70	41-VZ18-0580	Push Lever Shaft	1
71	41-VZ18PS-0670	Push Lever Spring	1
72	41-VZ18PS-0660	Pivot	1
73	41-VZ18PS-0600U	Name Plate A (Caution Seal)	1
74	-----	Name Plate B (Model No. Seal)	1
75	41-B0HG5F35120NITP	Body Case Set Screw 3.5x12	2
76	41-CL65-0651	Hanger	1
77	41-VZ18-0641U	End Ring	1
78	41-VZ18-3650U	Cord Assembly (32, 64, 65)	1

## Mountz Calibration & Repair Services

Mountz Inc. features an experienced calibration and repair staff. Our trained technicians can calibrate and repair most any tool. Mountz provides rapid service with quality that you can trust as we offer two state-of-the-art calibration lab and repair facilities that can calibrate up to 20,000 lbf.ft.

With over 45 years of experience, Mountz's in-depth knowledge of torque is reflected in our tool's craftsmanship and our ability to provide solutions to both common and uncommon torque applications. We perform calibrations in accordance with ANSI/NCSL-Z540. Mountz is dedicated solely to the manufacturing, marketing and servicing of high quality torque tools.

Mountz is an ISO 9001 certified and ISO 17025 accredited company.

## Testing Power Tools:

1. Application Method: Use a torque analyzer in "Peak Mode" with a rotary transducer between the power tool and the actual application. This is the best way to test since you are using the actual joint as the test station. You will see the actual torque applied to the fastener. **Caution:** Variances in tool performance may occur do to the addition of the rotary transducer.
2. Simulated Method: Always use a quality joint rate simulator (run down adapter) with a torque analyzer when testing power tools in a simulated application. Use Joint rate and Breakaway methods to obtain most accurate torque readings in a simulated rundown.

## Mountz Service Locations

### Eastern Service Center

19051 Underwood Rd.  
Foley, AL 36535  
Phone: (251) 943-4125  
Fax: (251) 943-4979

### Western Service Center

1080 N.11th Street  
San Jose, CA 95112  
Phone: (408) 292-2214  
Fax: (408) 292-2733

[www.mountztorque.com](http://www.mountztorque.com)  
[sales@mountztorque.com](mailto:sales@mountztorque.com)



Twitter: @mountztorque

Download a "Service Form" and include a copy when you send the tools in to be serviced.

Looking for fasteners?  
[www.mrmetric.com](http://www.mrmetric.com)

**mr.  
metric®**