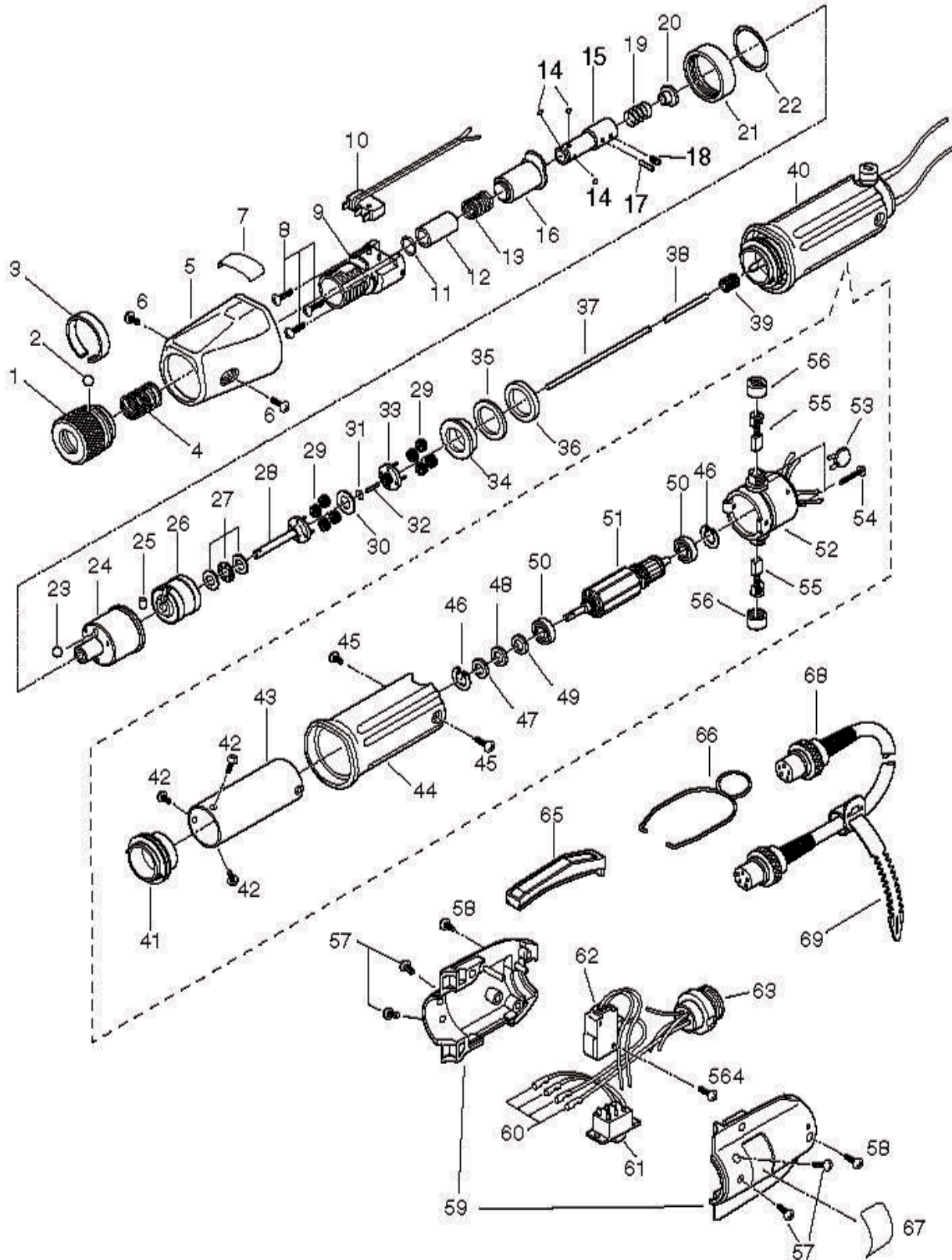


# CL6000PS Parts List

Rev 2.5 1/31/2014



# CL6000PS Parts List

No.	Part Number	Description	Qty.
	41-CL6PSX-TM	Transmission Assy 1-38 (W/O10;34-37)	1
	41-CL65-NT	Torque Adjusting Nut Assembly 1 - 3	1
1	41-CL65-0010	Torque Adjusting Nut	1
2	220058	Steel Ball 3.0mm	1
3	41-CL65-0030	Knotting Ball Band	1
4	41-CL6-0040	Torque Adjusting Spring (Brown)	1
5	41-CL65-0050	Clutch Cover	1
6	220208	Phil Pan Head Screw 3x5	2
7	41-CL6-0070	Mark Label (CL-6000PS)	1
8	220218	Phil Pan Head Screw 2.6x8	3
9	41-CL65-0090	Torque Adjusting Bolt	1
10	41-CL4-0230	Limit Switch	1
	41-CL65PSX-JS	Joint Shaft Assembly 11 - 15	1
11	41-CL65-0110	Collar Stopper	1
12	41-CL65X-0120	Joint Shaft Collar	1
13	41-CL65-0130	Collar Spring	1
14	220054	Steel Ball 2.0mm	1
15	41-CL65PSX-0160	Joint Shaft HEX	1
16	41-CL65-0160	Clutch Supporter	1
17	41-DL10-0180	Joint Shaft Lock Pin 2x11.8	1
18	220100	Skt Set Cup Pt. Screw 3x3	1
19	41-CL65PS-0190	Intermediary Spring	1
20	41-CL65PS-0200	Switch Intermediary	1
21	41-CL65-0190	Gear Case Set Ring	1
22	41-CL65-0200	O-Ring	1
	41-CL65PS-GR	Gear Assembly 23 - 33;38	1
23	220068	Steel Ball 5.5mm	1
24	41-CL65PS-0240	Gear Case	1
25	41-CL65-0230	Cam Roller 5x7	1
26	41-CL65PS-0260	Internal Gear	1
27	41-CL65-0250	Thrust Bearing 6x12	2
28	41-CL65PS-0270	Lower Planet Cage	1
29	41-CL65PS-0280	Planet Gear	8
30	41-CL7-0680	Gear Plate B	1
31	41-CL4-0290	Thrust Washer	1
32	41-CL65PS-0300	Center Pin A	1
33	41-CL65PS-0310	Upper Planet Cage	1
34	41-CL65PS-0320	Gear Support	1
35	41-CL65PS-0671	Washer 0.1	1
36	41-CL65PS-0370	Bearing For Gear Support	1
37	41-CL6PS-0471	Center Pin B for CL-6000PS	1
39	41-CL65PS-0330	Pinion Gear	1
40	41-CL6PS-0340	Motor for CL-6000PS	1
41	41-CL65PS-0360	Motor Front Cover	1
42	220202	Phil Pan Head Screw 3x4	3
43	41-CL6PS-Magnet	Magnet Case for CL-6000PS	1
44	41-CL6-0440	Motor Case for CL-6000PS	1
45	220201	Phil Pan Head Screw 3x4	2
46	41-CL65-0370	Ring Stopper S	1
47	41-CL65-0380	Wave Washer	1
48	41-CL65-0390	Rotor Adjusting Washer 0.1	1
49	41-CL65-0400	Rotor Adjusting Washer 0.2	1
50	41-CL65-0410	Motor Bearing	2
51	41-CL6PS-0420	Rotor for CL-6000PS	1
52	41-CL65-0470	Motor End Cover	1
53	41-CL4-0441	Capacitor	1

# CL6000PS Parts List

No.	Part Number	Description	Qty.
54	220212	Sl. Cheese Head Screw	1
55	41CL65-0490	Carbon Brush	1
56	41-CL65-0500	Carbon Brush Cap	2
57	220207	Phil Pan Head Screw 3x8	4
	41-CL65PS-SW	Switch Assembly 58-67	1
58	220217	Phil Pan Head Screw 2.6x5	2
59	41-CL65-0530	Switch Cover A & B	1
60	41-CL4-0550	Terminal Holder	1
61	41-CL65-0590	For/Rev Switch	1
62	41-CL65PS-0610	Starting Switch	1
63	41-CL4-0580	5-Pin Connector	1
64	220302	Set Screw 3x18	1
65	41-CL65PS-0641	Side Cover	1
66	41-CL65-0651	Hanger	1
67	41-CL65PS-8060	Mark Label B	1
68	41-CL65-0660	5-Core Cord W/Connectors In Both Ends	1
69	41-CL65-0670	Free-Up Belt	1

## Mountz Calibration & Repair Services

Mountz Inc. features an experienced calibration and repair staff. Our trained technicians can calibrate and repair most any tool. Mountz provides rapid service with quality that you can trust as we offer two state-of-the-art calibration lab and repair facilities that can calibrate up to 20,000 lbf.ft.

With over 45 years of experience, Mountz's in-depth knowledge of torque is reflected in our tool's craftsmanship and our ability to provide solutions to both common and uncommon torque applications. We perform calibrations in accordance with ANSI/NCSL-Z540. Mountz is dedicated solely to the manufacturing, marketing and servicing of high quality torque tools.

Mountz is an ISO 9001 certified and ISO 17025 accredited company.

## Testing Power Tools:

1. Application Method: Use a torque analyzer in "Peak Mode" with a rotary transducer between the power tool and the actual application. This is the best way to test since you are using the actual joint as the test station. You will see the actual torque applied to the fastener. **Caution:** Variances in tool performance may occur do to the addition of the rotary transducer.
2. Simulated Method: Always use a quality joint rate simulator (run down adapter) with a torque analyzer when testing power tools in a simulated application. Use Joint rate and Breakaway methods to obtain most accurate torque readings in a simulated rundown.

## Mountz Service Locations

### Eastern Service Center

19051 Underwood Rd.

Foley, AL 36535

Phone: (251) 943-4125

Fax: (251) 943-4979

### Western Service Center

1080 N.11th Street

San Jose, CA 95112

Phone: (408) 292-2214

Fax: (408) 292-2733

[www.mountztorque.com](http://www.mountztorque.com)  
[sales@mountztorque.com](mailto:sales@mountztorque.com)



Twitter: @mountztorque

Download a "Service Form" and include a copy when you send the tools in to be serviced.

Looking for fasteners?  
[www.mrmetric.com](http://www.mrmetric.com)

**mr.  
metric®**  
your trusted source for screws, nuts, washers and  
a division of Mountz, Inc. - established 1965