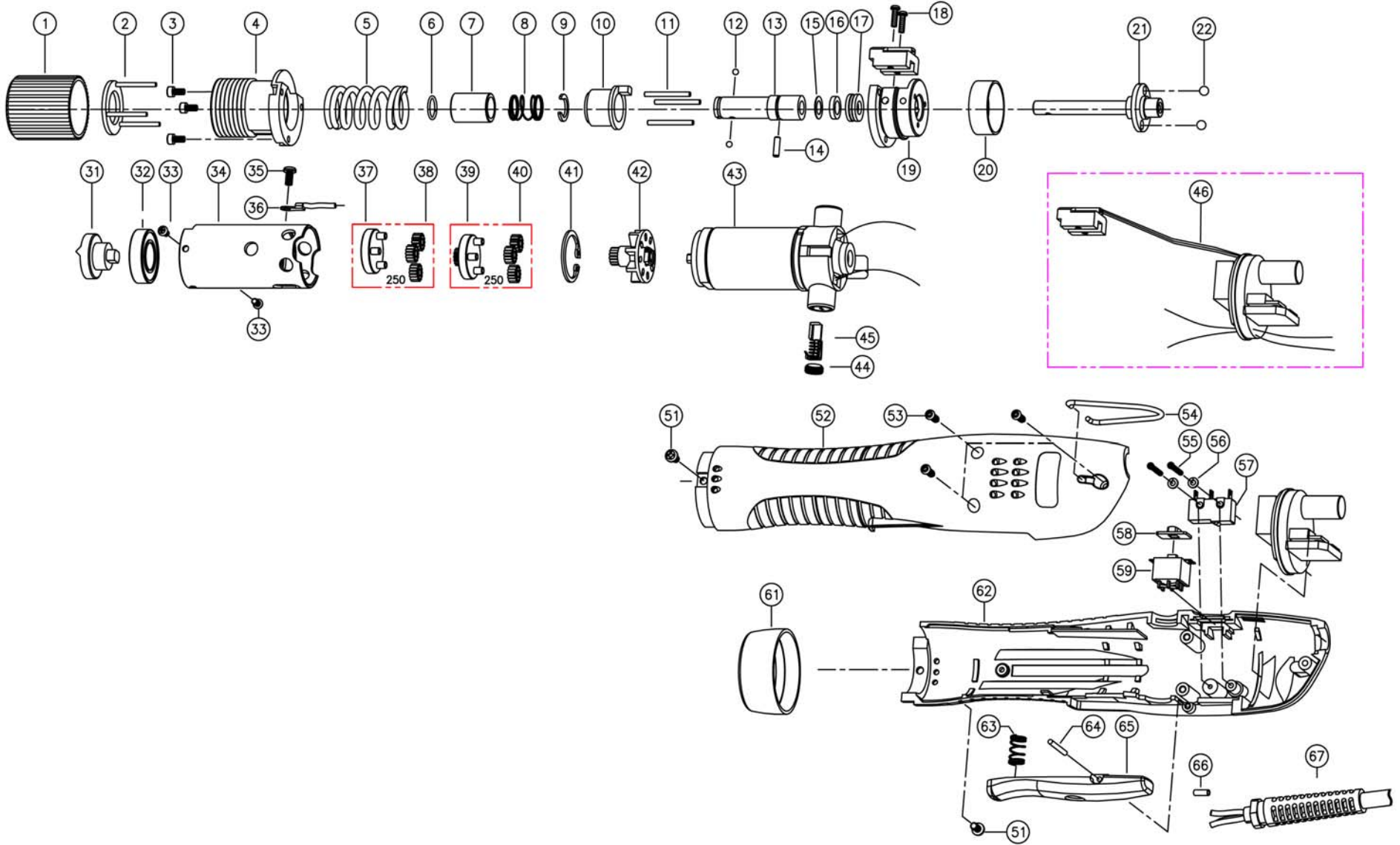


E250-A Lever Start Model (110V)

Rev 2.0 4/24/2013





E250-A Lever Start Model (110V)

Rev 2.0 4/24/2013

No.	Part Number	Description	Qty.	Note	No.	Part Number	Description	Qty.	Note
1	14-500205	Adjuster	1						
2	14-508130	Torque Spring Holder Assy	1		36	14-QSM0323	Earth Wire	1	
3	14-PSW2201	Wrench Bolt M2.5x5L	3		37	14-PSS1110	Gear Holder Assy	1	
4	14-PSS1131	Top Cover Assy	1		38	14-PSS1212	2nd Idle Gear	3	
5	14-520210	Torque Spring - Black	1		39	14-PSS1103	1st Gear Holder Assy	1	
	14-520235	Torque Spring - Bronze	1		40	14-PSS1217	1st Idle Gear	3	
6	14-500111	Bit Socket Ring	1		41	14-PAL1901	Snap Ring (R22)	1	
7	14-520011	Bit Collar	1		42	14-PSS1136	Fan Gear Assy	1	
8	14-520621	Collar Spring	1		43	14-501803	Motor Assembly 110V	1	
9	14-PSK1954	C-Ring	1		44	14-501831	BRUSH CAP	2	
10	14-3000122	Sleeve Assy	1		45	14-PSM4100	Carbon Brush Assy	2	
11	14-PSK1327	Needle Pin	3		46	14-502505	Control PCB Assembly (110V]	1	
12	14-PAL1928	Steel Ball (for 1/4 F/Hex Dr Models)	2		51	14-520480	Screw (M3X6L)	2	
13	14-PSK1401	Bit Socket A	1		52	14-PSM1827	Upper Housing	1	
14	14-PAL1231	Gear Holder Pin	1		53	14-502302	Screw (Torx 3x12 L)	3	
15	14-PAL1946	Bend Washer	1		54	14-500680	HOOK	1	
16	14-PSK1347	Spacer	1		55	14-PSW2601	Screw (T Philips 2x16L)	2	
17	14-PSK1921	Thrust Bearing	1		56	14-PSW2801	Washer (Spring M2.3)	2	
18	14-PSW2901	Screw, (M Slot M2.3x10L)	2		57	14-PELS301	Micro Switch	1	
19	14-PSS1118	Bearing Cover Assy	1		58	14-PAL1130	Switch Cover Assy	1	
20	14-PSS1319	Slide Ring	1		59	14-PELS102	Slide Switch Assy	1	
21	14-PSS1302	Shaft	1		61	14-PSS1802	Housing Nut	1	
22	14-PAL1932	Steel Ball 4mm	2		62	14-PSM1828	Lower Housing	1	
31	14-PSS1206	Clutch	1		63	14-PSM1841	Lever Spring	1	
32	14-PSM1906	Ball Bearing	1		64	14-PSK1327	Needle Pin	1	
33	14-PSW2202	Screw (M Philips M2.6x5L)	2		65	14-PSM1835A	Lever	1	
34	14-PSM1201	Gear Case	1		66	14-QSM0902	Sleeve	1	
35	14-PSW2310	Screw (M Philips M3x6L Washer)	1		67	14-PSS3010	Power Cord 110V	1	