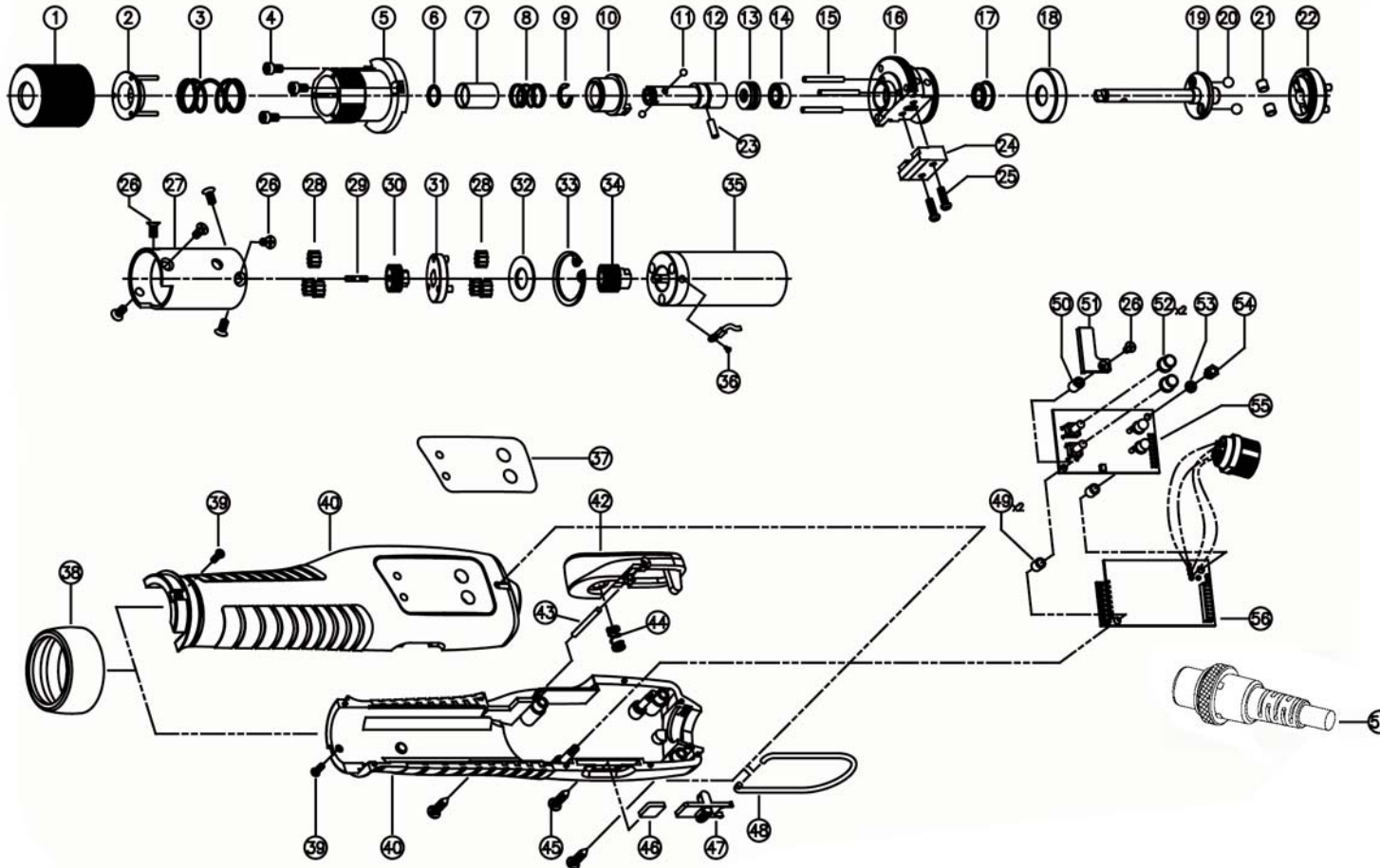


BF060 & BF060 Plus ESD Brushless Driver

Rev 1.1 5/23/2014



Contact
Mountz Inc.
Phone: 408.292.2214
Fax: 408.292.2733
sales@mountztorque.com
www.mountztorque.com

 Twitter: @mountztorque

Looking for fasteners?
www.mrmetric.com

**mr.
metric**®



BF060 & BF060 Plus ESD Brushless Driver

Rev 1.1 5/23/2014

No.	Part Number	Description	Qty.	Notes	No.	Part Number	Description	Qty.
1	14-PFE1801	Adjuster	1		32	14-5000314	Washer	1
2	14-PFE1132	Torque Spring Holder Assy	1		33	14-5000405	Snap Ring	1
3	14-5000305	Torque Spring (Natural)	1		34	14-3000460	Motor Pinion Gear Assy	1
	14-510225	Torque Spring (Bronze)	1		35	14-PFF4005A	Motor Set	1
4	14-PSW2201	Wrench Bolt (M, Hex, M2.5x5L)	3		36	14-PSW2205	Screw (M, Philips, M2.3x5L)	1
5	14-PFE1131	Top Cover Assy	1		37	14-5000664	Window Label for BF	1
6	14-PFE1973	Bit Socket Ring (for 1/4 F/Hex Dr)	1			14-QFF0407A	Window Label for BF Plus	1
	14-5000466	Bit Socket Ring (for 4mm HIOS Dr)	1		38	14-PFF1802	Housing Nut	1
7	14-PFE1410	Bit Collar (for 1/4 F/Hex Dr)	1		39	14-PSW2202	Screw (M, Philips, M2.6x5L)	2
	14-5000308	Bit Collar (for 4mm HIOS Dr)	1		40	41-3000913	BF Housing Set	1
8	14-PFE1964	Collar Spring (for 1/4 F/Hex Dr)	1		42	14-PFF1115B	Lever Assy	1
	14-5000304	Collar Spring (for 4mm HIOS Dr)	1		43	14-PSK1327	Needle Pin	1
9	14-PFE1955	C-Ring (5103-31)	1		44	14-PFE1841	Lever Spring	1
10	14-3000030	Sleeve Assy EFV3	1		45	14-PSW2602	Screw (T, Torx, 2.6x10L)	3
11	220052	Steel Ball 1.5 (for 1/4 F/Hex Dr)	2		46	14-PFF1830	Switch Lock	1
	14-PAL1928	Steel Ball (for 4mm HIOS Dr)	2		47	14-PFF1130	Switch Cover Assy	1
12	14-PFE1412	Bit Socket A (for 1/4 F/Hex Dr)	1		48	14-500680	Hook	1
	14-5000307	Bit Socket A (for 4mm HIOS Dr)	1		49	14-PFF1842A	PCB Support	1
13	14-PFE1920	Thrust Bearing (F5 - 11)	1		50	14-PFF1824A	Nut (Slot)	1
14	14-PFE1907	Ball Bearing (MR105)	1		51	14-PFF1719	Connector Lock	1
15	14-PFE1327	Needle Pin	3		52	14-PFF1723	Button Cap	1
16	14-PFE1118	Bearing Cover Assy (Lever)	1		53	14-PSW2803	Spring Washer	1
17	14-PFE1908	Ball Bearing (MF105)	1		54	14-PFF1824	Nut	1
18	14-PFE1319	Slide Ring	1		55	14-3000447	Control PCB Set	1
19	14-PFE1302	Shaft (Lever)	1		56	14-PFFZ537A	14-AMP PCB SET V 1.03.02 for AS*	1
20	14-PAL1932	Steel Ball (4)	2		57	14-PELZ932A	Cable 6Pin (3M, Standard)	1
21	14-PFE1910	Roller	2					
22	14-3000653	Clutch Assy	1					
23	14-PFE1413	Holder Pin	1					
24	14-3000038	Sensor Assy 3EF (Lever)	1					
25	14-PSW2211	Screw (M, Philips, M2.3x8L)	2					
26	14-PSW2207	Screw (M, Philips, M2.6x6L)	6					
27	14-5000310	Gear Case	1					
28	14-5000117	2nd Idle Gear (Mini)	6					
29	14-PFE1915	Center Pin	1					
30	14-5000302	2ND Pinion Gear	1					
31	14-3000654	Gear Holder Assy BF060	1					

* Please include model name BF060 Plus when ordering