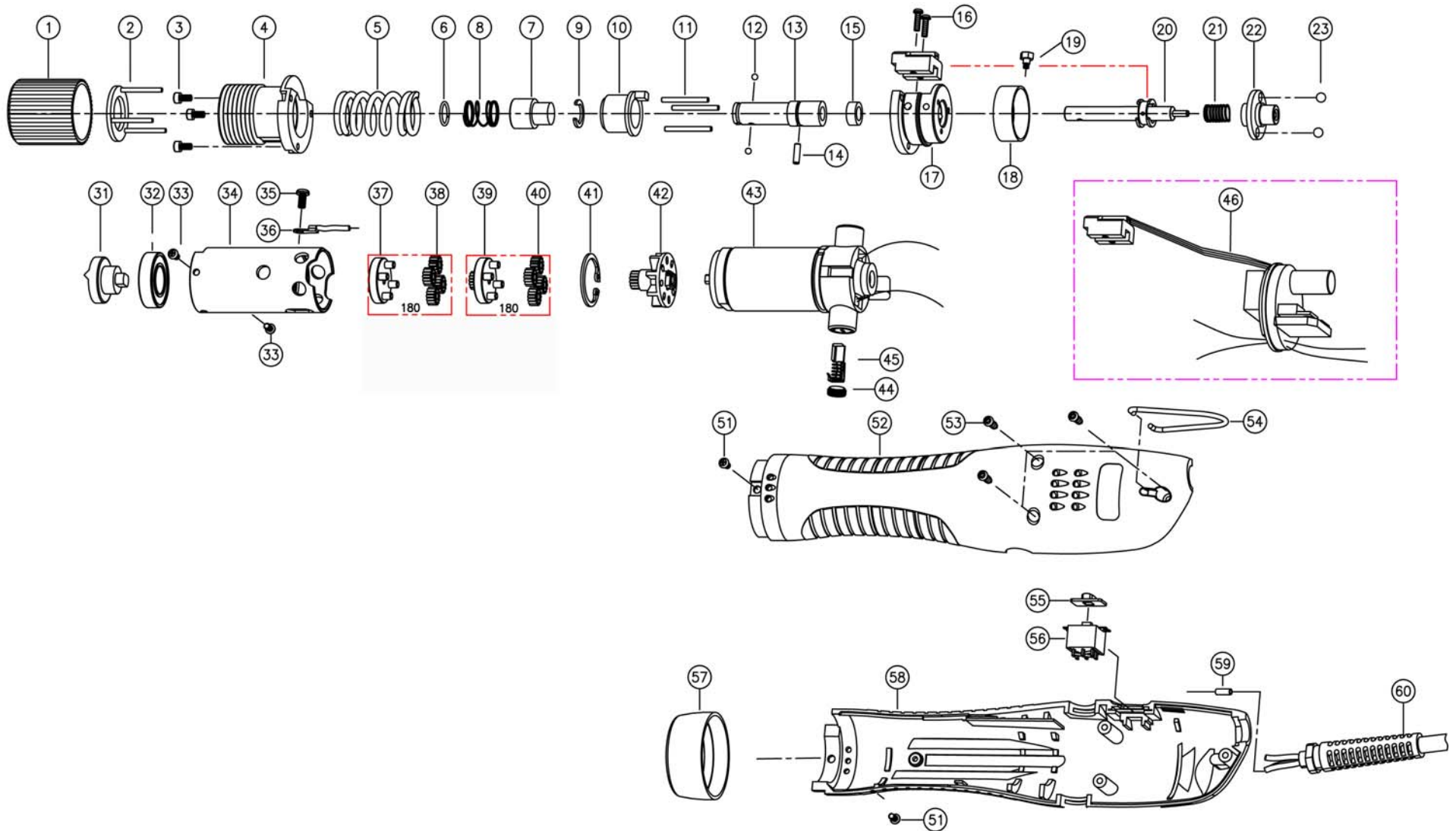


E180-PS Lever Start Model (220V)

Rev 2.0 4/25/2013





E180-PS Lever Start Model (220V)

Rev 2.0 4/25/2013

No.	Part Number	Description	Qty.	Note	No.	Part Number	Description	Qty.	Note
1	14-500205	Adjuster	1		36	14-QSM0323	Earth Wire	1	
2	14-508130	Torque Spring Holder Assy	1		37	14-PSM1100	Gear Holder Assy	1	
3	14-PSW2201	Wrench Bolt M2.5x5L	3		38	14-PSS1211	2nd Idle Gear	4	
4	14-PSS1131	Top Cover Assy	1		39	14-PSS1102	1st Gear Holder Assy	1	
5	14-520230	Torque Spring - Silver	1		40	14-PSM1216	1st Idle Gear	4	
	14-520235	Torque Spring - Bronze	1		41	14-PAL1901	Snap Ring (R22)	1	
6	14-5000471	Bit Socket Ring	1		42	14-PSM1135	Fan Gear Assy	1	
7	14-520011	Bit Collar	1		43	14-PSM4004	Motor Assembly 220V	1	
8	14-520621	Collar Spring	11		44	14-501831	Carbon Brush Cap	2	
9	14-PSK1954	C Ring	1		45	14-PSM4100	Carbon Brush Assy	2	
10	14-3000122	Sleeve Assy	1		46	14-PSSZ523A	Control PCB Assembly (220V)	1	
11	14-PSK1327	Needle Pin	3		51	14-520480	Screw (M3X6L)	2	
12	220056	Steel Ball	2		52	14-502024	Upper Housing	1	
13	14-5000318	Bit Socket	1		53	14-502302	Screw (Torx 3x12 L)	3	
14	14-PAL1231	Gear Holder Pin	1		54	14-500680	Hook	1	
15	14-5000555	Push Spacer	1		55	14-PAL1130	Switch Cover Assy	1	
16	14-PSW2901	Screw (M Slot M2.3x10L)	2		56	14-PELS102	Slide Switch Assy	1	
17	14-PSS1119	Bearing Cover Assy	1		57	14-PSS1802	Housing Nut	1	
18	14-PSS1319	Slide Ring	1		58	14-PSS1826	Lower Housing	1	
19	14-PSK1113	Magnet Holder Assy	1		59	14-QSM0902	Sleeve	1	
20	14-3000547	Push Shaft Assy	1		60	14-PSS3015	Power Cord 220V	1	
21	14-PSK1963	Spring	1						
22	14-PSS1305	Shaft (Ball Holding Type)	1						
23	14-PAL1932	Steel Ball 4mm	2						
31	14-PSS1206	Clutch	1						
32	14-PSM1906	Ball Bearing	1						
33	14-PSW2202	SCREW (M Philips M2.6x5L)	2						
34	14-PSM1201	Gear Case	1						
35	14-PSW2310	Screw (M Philips M3x6L Washer)	1						