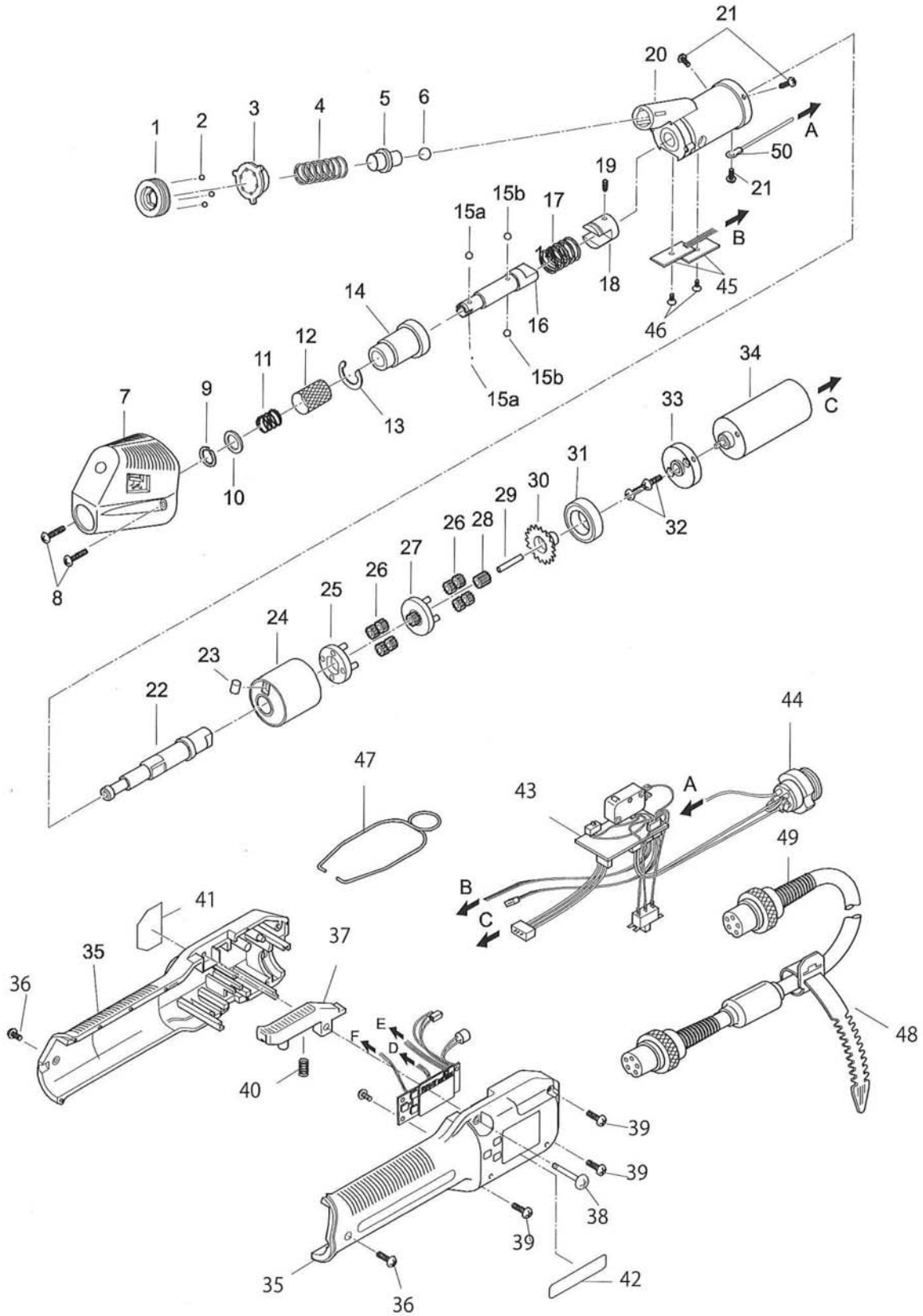


BLG-5000BC1

Rev 1 (9/7/2017)



BLG-5000BC1

No.	Part Number	Description	Qty.
1	41-BLG5-0010	Torque Adjusting Nut	1
2	41-BALL-015	Steel Ball 1.5mm	3
3	41-BL4-0021	Torque Adjusting Spring Holder	1
4	41-BL7-0051-1.6	Torque Adjusting Spring	1
5	41-BL4-0060	Clutch Panel	1
6	41-BALL-05	Steel Ball 5.0mm	1
7	41-BL4-0172ESD	Clutch Cover	1
8	41-MYPF260803CTMG	Set Screw M2.6x8	2
9	41-CL4-0090	Collar Stopper for (H4 HIOS Dr.)	1
	41-CL65-0110	Collar Stopper for (H5 HIOS Dr. & 1/4 F/Hex Dr.)	1
10	41-CL3-0620	Washer for (4mm HIOS Dr.)	1
	41-BL65-0130	Washer for (5mm HIOS Dr.)	1
	41-BL40X-0630	Washer (1/4 F/Hex Dr.)	1
11	41-BL4-0120	Collar Spring for (4mm HIOS Dr.)	1
	41-BL65-0120	Collar Spring for (5mm HIOS Dr.)	1
	41-BL4X-0120	Collar Spring for (1/4 F/Hex Dr.)	1
12	41-BL4-0071	Joint Shaft Collar (4mm HIOS Dr.)	1
	41-BL5-0071-H5	Joint Shaft Collar (5mm HIOS Dr.)	1
	41-BL4X-0070	Joint Shaft Collar (1/4 F/Hex Dr.)	1
13	41-BL4-0080	E-Ring	1
14	41-BL4X-3141	Joint Shaft Cover w/Magnet (4mm HIOS Dr. & 1/4 F/Hex Dr.)	1
	41-BL5-3140-H5	Joint Shaft Cover w/Magnet (H5 HIOS Dr.)	1
15a	41-BALL-02	Steel Ball 2.0mm for (4mm HIOS Dr.)	2
	41-BALL-025	Steel Ball 2.5mm for (5mm HIOS Dr.)	2
	41-BALL-015	Steel Ball 1.5mm for (1/4 F/Hex Dr.)	3
15b	41-BALL-025	Steel Ball 2.5mm for (4mm HIOS Dr.)	2
	41-BALL-015	Steel Ball 1.5mm for (4mm HIOS Dr. & 1/4 F/Hex Dr.)	3
	41-BALL-0277	Steel Ball 2.777 for (5mm HIOS Dr.)	1
16	41-BL4-0102	Joint Shaft for (4mm HIOS Dr.)	1
	41-BL5-0011	Joint Shaft for (5mm HIOS Dr.)	1
	41-BL4X-0101	Joint Shaft for (1/4 F/Hex Dr.)	1
17	41-BL4-0130	Push Spring	1
	41-BLG5-GR	Gear Assembly # 18 - 31	1
18	41-BL4-0180	Joint	1
19	41-SH26X030	Set Screw M2.6X3	1
20	41-BL4-0191-FE	Gear Case	1
21	41-MYPF260603CTMG	Set Screw 2.6x6	3
22	41-BL4-0201	Lower Planet Shaft	1
23	41-CL4-0250	Cam Roller 4x5.5	1
24	41-BL4-3211	Internal Gear (Single/Magnet)	1
25	41-BL4-0240	Lower Floor	1
26	41-VZ10-0302	Planet Gear	8
27	41-VZ10-0331	Upper Planet Cage	1
28	41-BL4-0293	Pinion Gear	1
29	41-F9-0260	Center Pin	1
30	41-BL4-0220	Cup Ring	1
31	41-BL4-0311	Bearing	1



BLG-5000BC1

No.	Part Number	Description	Qty.
	41-BLG5-MT	Motor Assembly # 32 - 35	1
32	41-MYPF260603CTMG	Set Screw 2.6x6	4
33	41-BLG5-0330	Motor Front Panel	1
34	41-BLG5-Y0340	Motor	1
35		Body Case A&B (Display PCB Assy included)	
	41-BLG5-CASEASSY-BC1	for BC1	
	41-BLG5-CASEAS-BC1	for BC1 for MC (CALs)	
	41-BLG5-CASEASSY-BC2	for BC2	
	41-BLG5-CASEAS-BC2	for BC2 for MC (CALs)	
36	41-MYPF260603CTMG	Set Screw 2.6x6	2
37	41-BLG4-0370	Switch Lever	1
38	41-BLG4-0391	S/W Lever Shaft Knob 3x18	1
39	41-BLG4-0500	Set Screw Tapping 2.5x12	3
40	41-CL4-0511	Switch Lever Spring	1
41	41-BLG4-0410	Name Plate HIOS	1
42	41-BLG5BC1-0020	Name Plate for BLG-5000BC1	1
	41-BLG5BC2-0020	Name Plate for BLG-5000BC2	1
43.	Circuite Assy Including # 46		
	41-BLG5-CC-BC1	for BLG-5000BC1	1
	41-BLG5-CC-BC2	for BLG-5000BC2	1
44	41-RD4-0580	6 Pin Connector	1
45	41-SPC20X040	Set Screw 2.0x4	2
46	41-BLG4-0420	Hanger	1
47	41-CL4-0600	Free-Up Belt	1
48	41-RP50-CL	6 Core-Cord w/Connectors in Both Ends	1