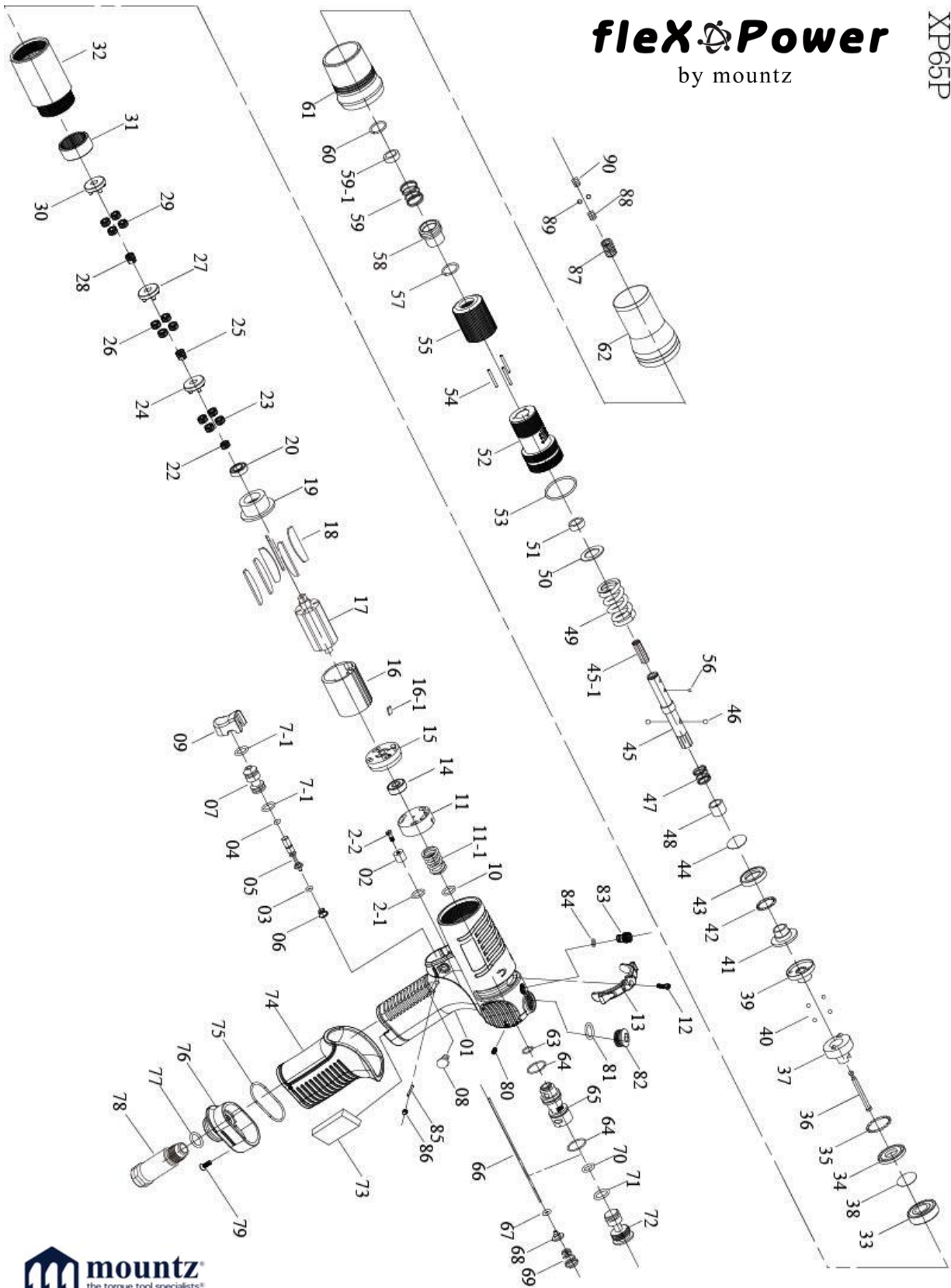


# PNEUMATIC SCREWDRIVER MODEL NO.

# XP65P

## **flexPower** by mountz

### XP65P



[www.mountztorque.com](http://www.mountztorque.com)

## PNEUMATIC SCREWDRIVER MODEL NO.

XP65P

| No.  | Part No.    | Part Name              | Q'ty | No.  | Part No.     | Part Name               | Q'ty |
|------|-------------|------------------------|------|------|--------------|-------------------------|------|
| 1    | 63-5L2032   | Pistol Housing (Black) | 1    | 45-1 | 63-7Q2002    | Regulate Screw          | 1    |
| 2    | 63-2C2002   | Blank Cap              | 1    | 46   | 63-7S2105    | Ball                    | 2    |
| 2-1  | 63-7Q2008   | O Ring                 | 1    | 47   | 63-6N5110    | Spring                  | 1    |
| 2-2  | 63-7S2106-1 | Screw                  | 1    | 48   | 63-3S2227    | Slide Base              | 1    |
| 3    | 63-7Q2006   | O Ring                 | 1    | 49   | 63-6N3009    | Torque Spring           | 1    |
| 4    | 63-7Q6112   | Valve O-Ring           | 1    | 50   | 63-7S5121    | Washer                  | 1    |
| 5    | 63-6S2023   | Valve Pin              | 1    | 51   | 63-3S2139    | Bushing                 | 1    |
| 6    | 63-6N2116   | Spring                 | 1    | 52   | 63-3S6130    | Clutch Housing          | 1    |
| 7    | 63-6S2027   | Valve Bushing          | 1    | 53   | 63-7Q6118    | O Ring                  | 1    |
| 7-1  | 63-7Q2023   | O Ring                 | 2    | 54   | 63-6S2011    | Needle Pin              | 3    |
| 8    | 63-5L2111   | Cap                    | 2    | 55   | 63-3A6007    | Torque Ring             | 1    |
| 9    | 63-5L2701   | Button (Black)         | 1    | 56   | 63-7S2112    | Ball                    | 1    |
| 10   | 63-7Q2011   | Valve O-Ring           | 1    | 57   | 63-6N2084    | C Ring                  | 1    |
| 11   | 63-6S6104   | Valve                  | 1    | 58   | 63-5S2105    | Bit Slide Sleeve        | 1    |
| 11-1 | 63-6N5006   | Spring                 | 1    | 59   | 63-6N2128    | Spring                  | 1    |
| 12   | 63-7S2107   | Set Screw And Washer   | 1    | 59-1 | 63-2S2111    | Washer                  | 1    |
| 13   | 63-2L6026   | Switch (Iron)          | 1    | 60   | 63-6N3302    | C Ring                  | 1    |
| 14   | 63-7S5001   | Ball Bearing           | 1    | 61   | 63-5A3212    | Housing Cap             | 1    |
| 15   | 63-1S6001-A | End Plate              | 1    | 62   | 63-5A6517    | Torque Cover (Black)    | 1    |
| 16   | 63-1P6005   | Cylinder               | 1    | 63   | 63-7Q2008    | O Ring                  | 1    |
| 16-1 | 63-2S2023   | Key                    | 1    | 64   | 63-7Q6104    | O Ring                  | 2    |
| 17   | 63-1S6046   | Rotor                  | 1    | 65   | 63-6S2101    | Valve Ring              | 1    |
| 18   | 63-1P6052   | Oil-Free Blade         | 6    | 66   | 63-6S2005    | Operating Rod           | 1    |
| 19   | 63-1P3012   | Front Plate            | 1    | 67   | 63-7Q2006    | O Ring                  | 1    |
| 20   | 63-7S2002   | Ball Bearing           | 1    | 68   | 63-6S2021    | Valve Plate             | 1    |
| 22   | 63-1P2274   | 18T Main Gear          | 1    | 69   | 63-6N2107    | Cone Spring             | 1    |
| 23   | 63-1P2110   | 12T Plate Gear         | 4    | 70   | 63-7Q6103    | O Ring                  | 1    |
| 24   | 63-1P2280   | Third Gear Cage        | 1    | 71   | 63-2Q5001    | O Ring                  | 1    |
| 25   | 63-1G6270   | 18T Main Gear          | 1    | 72   | 63-2S2013    | Screw Cap               | 1    |
| 26   | 63-1P6110   | 12T Plant Gear         | 4    | 73   | 63-2P3040    | Silencer                | 1    |
| 27   | 63-1P2288   | Third Gear Cage        | 1    | 74   | 63-5L6201    | Pistol Cover            | 1    |
| 28   | 63-1P2096   | 14T Main Gear          | 1    | 75   | 63-2Q2003    | O Ring                  | 1    |
| 29   | 63-1P2132-T | 14T Plant Gear         | 4    | 76   | 63-2A6002    | Exhaust Deflector       | 1    |
| 30   | 63-1P2289   | Fourth Gear Cage       | 1    | 77   | 63-2Q5001    | O Ring                  | 1    |
| 31   | 63-1S2062   | Internal Gear          | 1    | 78   | 63-2S2050    | Air Inlet Bushing [PS]  | 1    |
| 32   | 63-4V1025   | Front Housing          | 1    | 78   | 63-2S2052    | Air Inlet Bushing [NPT] | 1    |
| 33   | 63-7S6003   | Ball Bearing           | 1    | 79   | 63-7S2115    | Screw                   | 1    |
| 34   | 63-2S6106   | Retainer               | 1    | 80   | 63-7S2113    | Screw                   | 2    |
| 35   | 63-7S2102   | Ball                   | 32   | 81   | 63-2Q5001    | O Ring                  | 1    |
| 36   | 63-3S5001   | Pilot Pin              | 1    | 82   | 63-2S2011-AL | Screw Cap               | 1    |
| 37   | 63-3S5214   | Rear Clutch            | 1    | 83   | 63-7S2122    | Screw                   | 1    |
| 38   | 63-6N2006   | C Ring                 | 1    | 84   | 63-7Q2020    | O Ring                  | 1    |
| 39   | 63-3S5219   | Center Clutch          | 1    | 85   | 63-7S5205    | Pin                     | 1    |
| 40   | 63-7S2112   | Ball                   | 4    | 86   | 63-7S2113    | Screw                   | 2    |
| 41   | 63-3S5221   | End Clutch             | 1    | 87   | 63-6N6001    | Spring                  | 1    |
| 42   | 63-7S2102   | Ball                   | 25   | 88   | 63-7S2111    | Screw                   | 1    |
| 43   | 63-3S5231   | Ball Race              | 1    | 89   | 63-7S2102    | Ball                    | 2    |
| 44   | 63-6N2006   | C Ring                 | 1    | 90   | 63-7S2111    | Screw                   | 1    |
| 45   | 63-3S7068   | Anvil                  | 1    |      |              |                         |      |