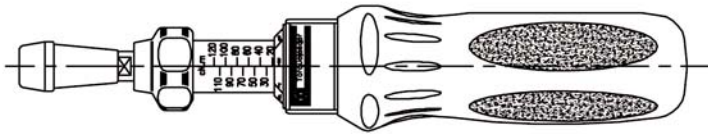
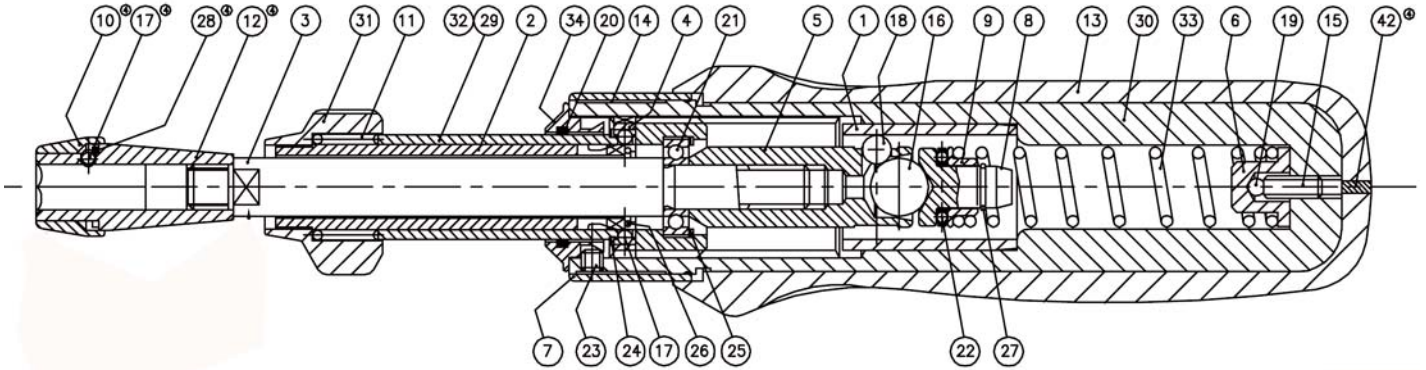
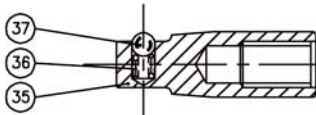


Parts List for EMT 160, 120 & 12

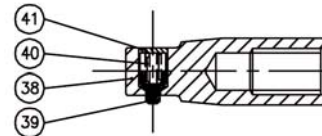
Version 1.2 (1/8/18)



1/4 Sq. Dr. Configurations
(Ball Retention)



1/4 Sq. Dr. Configurations
(Pin Retention)



Sub Assembly Parts

Part #	Description	Item #
20-A17300	Spindle / Ball Housing - Female Hex	3, 5, 21 & 25
20-A16620	Adjusting Screw / Actuator Sleeve	2, 4, 17, 24, 26 & 29
20-A17930	1/4" Sq. Drive Adapter- Ball Retention	35, 36 & 37
20-A17950	1/4" Sq. Drive Adapter- Pin Retention	38, 39, 40 & 41
20-A18860	1/4" F/Hex Adapter	10, 12 & 17
20-A11520	Ball Pad	8, 9, 22 & 27
20-A16870	Adjusting Screw	Assembly of 20-A16610 & 20-A16620

Parts List for EMT 160, 120 & 12

Version 1.2 (1/8/18)

No.	Part Number	Description	Qty.	Comments
1	20-A85000	Cam	1	
2	20-B13330	Actuator Sleeve	1	
3	20-A16430	Spindle	1	
4	20-A13550	Lock Ring	1	
5	20-A13400	Ball Housing	1	
6	20-A10330	Spring Seat	1	
7	20-A16340	Cover Molding	1	
8	20-A57440	Ball Pad	1	
9	20-A77900	Spring Pad	1	
10	20-A18670	Cover - FH Adapter	1	
11	20-A13580	Spring Actuator Sleeve	1	
12	20-A18660	Body - FH Adapter	1	
13	20-A15951	Hand Grip Molding	1	
14	20-A16720	Tool Label	1	
15	20-P23060	Soc. Set Screw M5 x 12 Lg.	1	
16	20-P10540	Steel Ball 5/16 in Dia.	1	
17	20-P11730	Steel Ball 2mm Dia	3	
18	20-P10610	Steel Ball 5/32 in Dia	3	
19	20-P10560	Steel Ball 3/32 in Dia	1	
20	20-P11060	"O" Ring-Square Section	1	
21	20-P24270	Ball Race-AX6	1	
22	20-A85900	Thrust Bearing	1	
23	20-P11080	Soc. Set Screw M3 x 3 Lg.	3	
24	20-P22300	Spirolox Ring	1	
25	20-P24290	Spirolox Ring WH51	1	
26	20-P24280	Sanp Ring-Internal RBM 0100	1	
27	20-P17180	Wire Ring	1	
28	20-P26340	Retaining Ring	1	
29	20-B13370	Adjusting Scew - Plain	1	See Item 32 for type
	20-B16940	Adjusting Scew - Plain	1	For EMT160 only
30	20-B16890	Housing	1	
	20-B16930	Housing	1	For EMT160 only
31	20-A16881	Adjusting Grip - Blue	1	For EMT160 & EMT120
	20-A16882	Adjusting Grip - Silver Grey	1	For EMT12
32	20-B16460	Adjusting Screw - Engraving	1	For EMT120 (cN.m)
	20-B16920	Adjusting Screw - Engraving	1	For EMT160 (ozf.in)
	20-B16581	Adjusting Screw - Engraving	1	For EMT12 (lbf.in)
	20-B23101	Adjusting Screw - Engraving	1	For EMT12 (kgf.cm)
33	20-A57462	Spring - Metric	1	For EMT120 (cN.m)
	20-A57462	Spring - Metric	1	For EMT12 (kgf.cm)
	20-A57462	Spring - Imperial	1	For EMT160 (ozf.in)
	20-A57463	Spring - Imperial	1	For EMT12 (lbf.in)
34	20-A16905	Bezel (Decimal Point)	1	For EMT12 (lbf.in) & EMT12 (kgf.cm)
	20-A57355	Bezel (Non Decimal)	1	For EMT120 (cN.m) & EMT160 (ozf.in)
35	20-A17960	1/4 Sq. Drive Body	1	Ball Retention
36	20-A10031	Ball Catch Spring	1	Ball Retention
37	20-P10650	Steel Ball 1/8 in. Dia	1	Ball Retention
38	20-A17970	1/4 Sq. Drive Body	1	Pin Retention
39	20-A64620	Pin	1	Pin Retention
40	20-A59850	Spring	1	Pin Retention
41	20-A59870	Spring Cup	1	Pin Retention
42	20-P20550	Sealant - Black	-	

Contact
Mountz Inc.
Phone: 408.292.2214
Fax: 408.292.2733
sales@mountztorque.com
www.mountztorque.com

 **Twitter: @mountztorque**

Looking for fasteners?
www.mrmetric.com

**mr.
metric®**